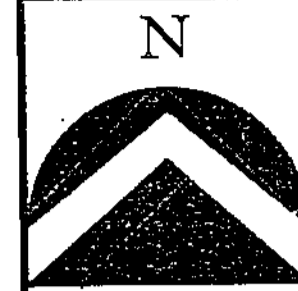


HURDMAN SUBDIVISION

A PART OF THE WEST HALF OF SECTION 24,
TOWNSHIP 2 NORTH, RANGE 1 WEST, SALT LAKE BASE & MERIDIAN.
WEST BOUNTIFUL CITY, DAVIS COUNTY, UTAH

PREFIX 19
06-317

LAST #
0002

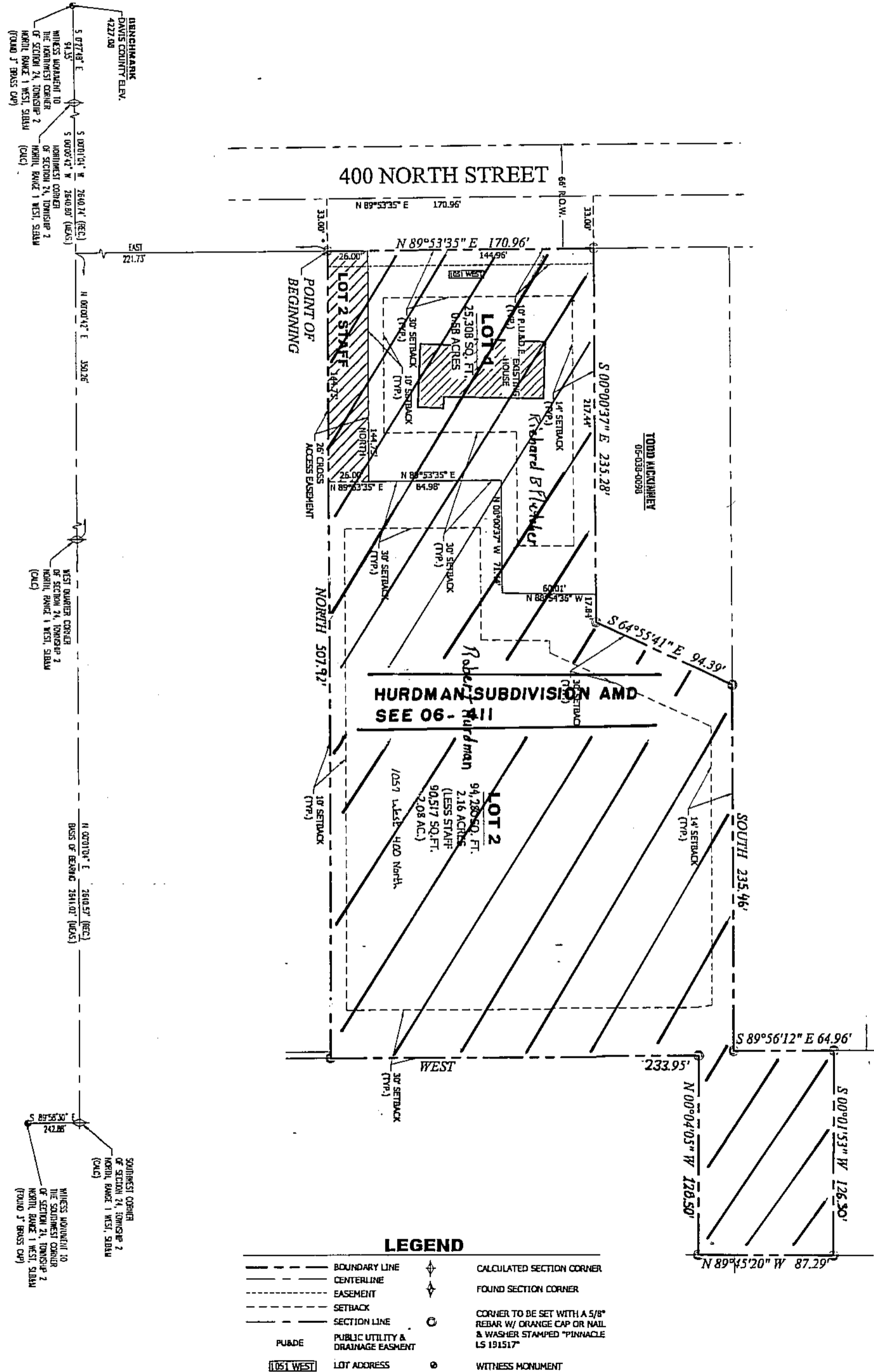


SCALE:
1" = 60'

DEVELOPMENT: HURDMAN SUBDIVISION
CITY: WEST BOUNTIFUL LOTS: 1 THRU 2

W 1/2 OF SEC. 24, T.2N, R. 1W
S.L.M. DAVIS COUNTY, UTAH

FILE # 4945
R 07-14-09



PINNACLE
Engineering & Land Surveying Inc

1513 North 1100th Rd., Suite #1 Layton, UT 84041 Phone: (801) 846-0678 Fax: (801) 846-0678

06 317