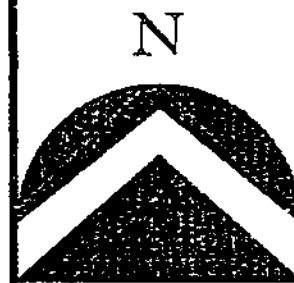


STOUT COMMERCIAL SUBDIVISION

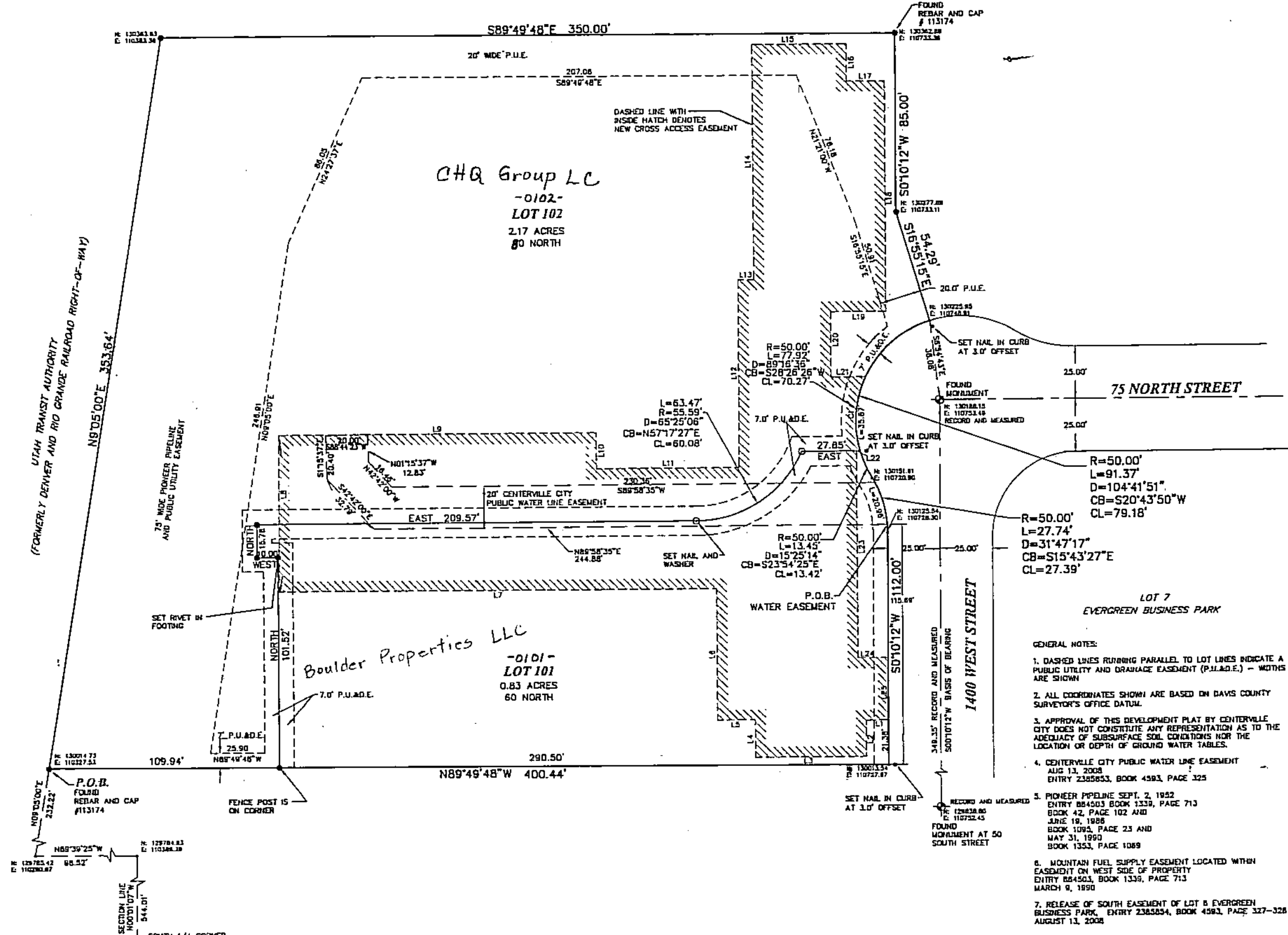
INCLUDING ALL OF LOT 6 EVERGREEN BUSINESS PARK
BEING A PART OF THE SOUTH HALF OF SECTION 12, TOWNSHIP 2 NORTH, RANGE 1 WEST
SALT LAKE BASE AND MERIDIAN
CENTERVILLE CITY, DAVIS COUNTY, UTAH

PREFIX
06-316

LAST #
0102



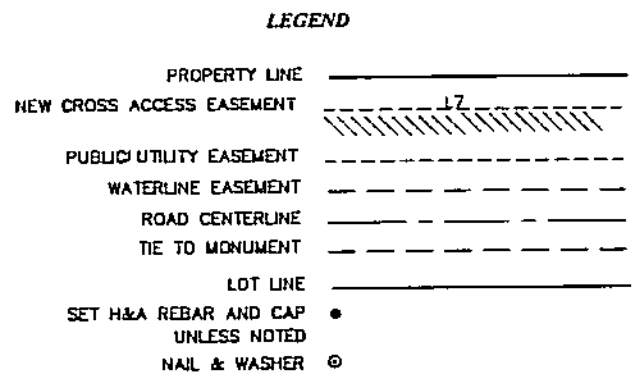
SCALE:
1" = 50'



- GENERAL NOTES:
- DASHED LINES RUNNING PARALLEL TO LOT LINES INDICATE A PUBLIC UTILITY AND DRAINAGE EASEMENT (P.U.A.D.E.) - WIDTHS ARE SHOWN
 - ALL COORDINATES SHOWN ARE BASED ON DAVIS COUNTY SURVEYOR'S OFFICE DATUM.
 - APPROVAL OF THIS DEVELOPMENT PLAN BY CENTERVILLE CITY DOES NOT CONSTITUTE ANY REPRESENTATION AS TO THE ADEQUACY OF SUBSURFACE SOIL CONDITIONS NOR THE LOCATION OR DEPTH OF GROUND WATER TABLES.
 - CENTERVILLE CITY PUBLIC WATER LINE EASEMENT AUG 13, 2008 ENTRY 230553, BOOK 4583, PAGE 325
 - PIONEER PIPELINE SEPT. 2, 1982 ENTRY 864503 BOOK 1339, PAGE 713 BOOK 42, PAGE 102 AND JUNE 18, 1988 BOOK 1083, PAGE 23 AND MAY 31, 1990 BOOK 1253, PAGE 1089
 - MOUNTAIN FUEL SUPPLY EASEMENT LOCATED WITHIN EASEMENT ON WEST SIDE OF PROPERTY ENTRY 864503, BOOK 1339, PAGE 713 MARCH 9, 1990
 - RELEASE OF SOUTH EASEMENT OF LOT 6 EVERGREEN BUSINESS PARK, ENTRY 230554, BOOK 4583, PAGE 327-328 AUGUST 11, 2008

CURVE	LENGTH	RADIUS	DELTA	CHORD BEARING	CHORD
C1	35.87	50.00	41°05'54"	S04°20'58"W	35.10

LINE	LENGTH	BEARING
L1	10.56	S90°00'00"W
L2	17.50	N00°00'00"E
L3	83.00	S90°00'00"E
L4	18.00	S00°00'00"E
L5	18.00	N90°00'00"E
L6	63.50	S00°00'00"E
L7	208.33	N90°00'00"W
L8	74.97	S00°00'00"E
L9	151.53	S90°00'00"W
L10	17.08	S00°00'00"E
L11	68.00	S89°58'35"W
L12	89.05	S00°00'00"E
L13	7.43	N90°00'00"E
L14	112.00	S00°00'00"E
L15	45.00	N90°00'00"W
L16	15.00	N00°00'00"W
L17	15.00	N80°00'00"W
L18	109.50	N00°00'00"W
L19	25.40	N90°00'00"E
L20	31.22	N00°00'00"W
L21	15.41	S90°00'00"E
L22	1.72	N90°00'00"E
L23	95.25	N00°00'00"E
L24	14.40	N80°00'00"E
L25	30.00	S00°10'12"W



DEVELOPMENT: STOUT COMMERCIAL SUBDIVISION
CITY: CENTERVILLE
LOTS: 101 THRU 102

S 1/2 OF SEC. 12, T.2N, R.1W
ALL OF LOT 6 EVERGREEN BUSINESS PARK
S.L.M. DAVIS COUNTY, UTAH

FILE # 4941
R 07-01-09

316

06