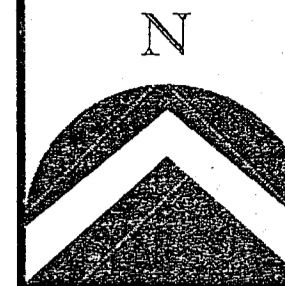


FOXBORO NORTH PLAT 12A

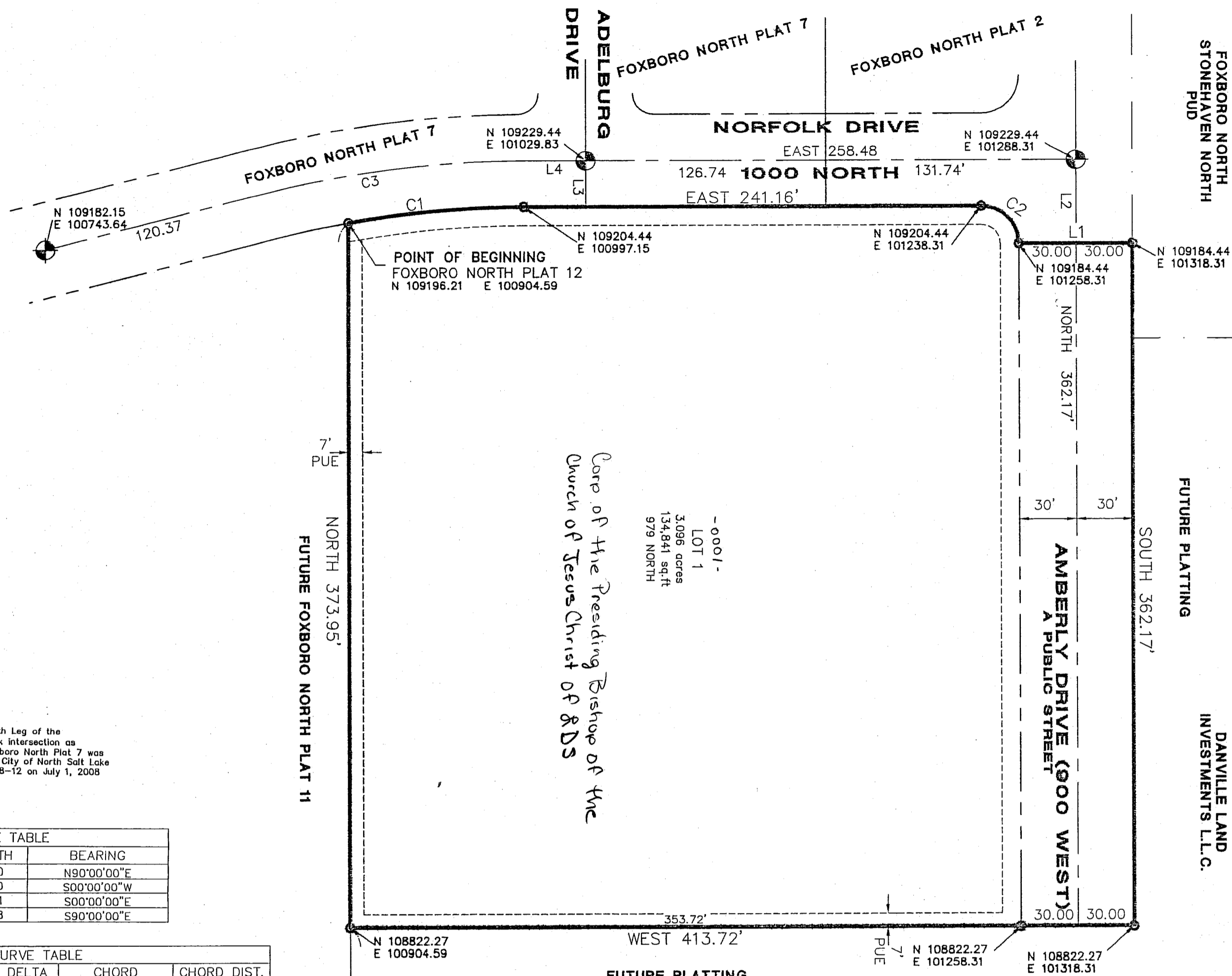
A SUBDIVISION LOCATED IN THE SOUTHEAST QUARTER OF SECTION 34, TOWNSHIP 2 NORTH,
RANGE 1 WEST, SALT LAKE BASE AND MERIDIAN, CITY OF NORTH SALT LAKE,
DAVIS COUNTY, UTAH

PREFIX
06-310

LAST #
0001



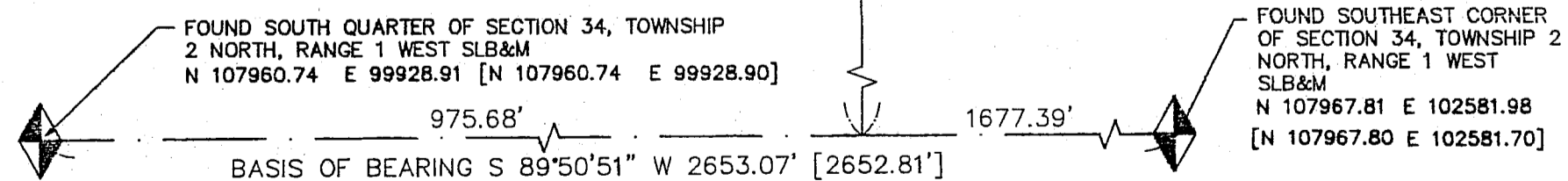
SCALE:
1" = 50'



NOTE: The South Leg of the Adelburg/Norfolk intersection as recorded in Foxboro North Plat 7 was vacated by the City of North Salt Lake via Ordinance 08-12 on July 1, 2008

LINE TABLE		
LINE	LENGTH	BEARING
L1	60.00	N90°00'00"E
L2	45.00	S00°00'00"W
L3	25.01	S00°00'00"E
L4	32.68	S90°00'00"E

CURVE TABLE					
CURVE	LENGTH	RADIUS	DELTA	CHORD	CHORD DIST.
C1	93.04	525.00	10°09'16"	N 84°55'22" E	92.92
C2	31.42	20.00	90°00'00"	S 45°00'00" E	28.28
C3	138.39	550.00	14°24'59"	S 82°47'31" W	138.02



- NOTES
- 1.) Rear lot corners will be located and marked on the ground with a 5/8" rebar 24" in length with a plastic cap labeled "BINGHAM ENG.". Front lot corners will be not be marked on the ground but at the extension of the side lot line to the top of curb will be located and marked by a pin or rivet inset into the top of the curb.
 - 2.) All public utility easements shown hereon are 10.00 feet wide unless otherwise noted.
 - 3.) The coordinates shown hereon are based on the datum of the Davis County Surveyor. Record bearings, distances and coordinate values are shown in brackets []. All other dimensions and coordinate values are measured.
 - 4.) Approval of this development plat by North Salt Lake City does not constitute any representation as to the adequacy of subsurface soil condition nor the location or depth of groundwater tables.
 - 5.) The finished floor elevation of any home shall be at least one (1) foot above the lowest top back of curb grade adjacent to the lot.

LEGEND:

	FOUND DAVIS COUNTY SECTION CORNER MONUMENTS (AS NOTED)		LOT LINE
	STREET MONUMENT (TO BE SET)		SECTION LINE
	STREET MONUMENT (SET BY PREVIOUS PLATTING)		RIGHT-OF-WAY LINE
	SET REBAR W/ CAP MARKED "BINGHAM ENG."		CENTERLINE
	SUBDIVISION BOUNDARY LINE		10.00' WIDE PUBLIC UTILITY EASEMENT LINE (UNLESS OTHERWISE NOTED)

[N = 105338.07 E = 102613.08] RECORD-COORDINATE VALUES AND/OR RECORD DIMENSIONS ARE SHOWN IN BRACKETS

BINGHAM ENGINEERING
5225 Wiley Post Way, Salt Lake City, UT 84116
(801) 532-2520 www.binghamnet.com

DEVELOPMENT: FOXBORO NORTH PLAT 12A
CITY: NORTH SALT LAKE LOT: 1

SE 1/4 OF SEC. 34, T.2N, R. 1W
S.L.M. DAVIS COUNTY, UTAH

FILE # 4881
R 11-06-08

310

906