

06 309

ALLEN BUSINESS PARK

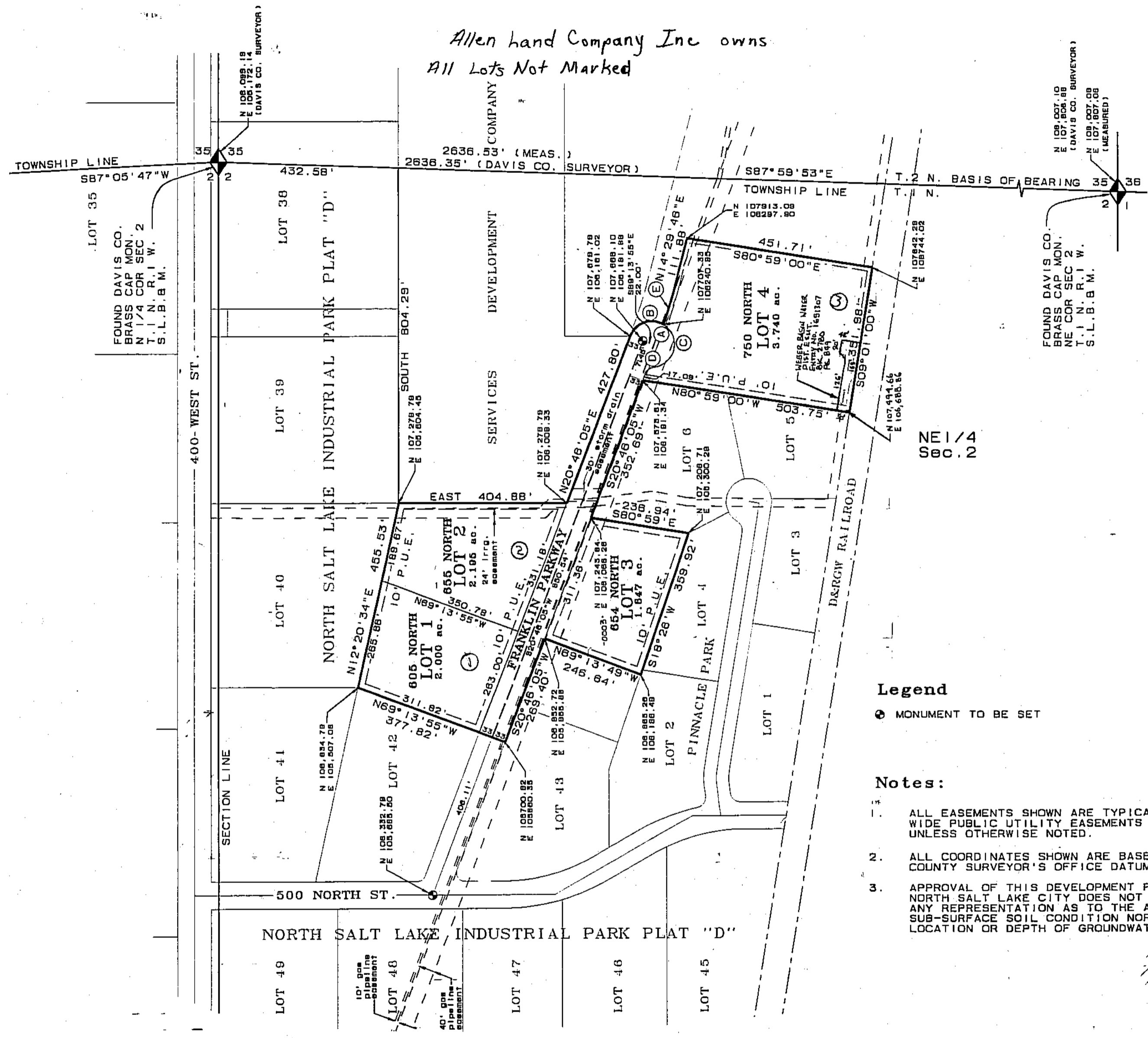
LOCATED IN THE NE 1/4 OF SECTION 2, T. 1N., R. 1W.
SALT LAKE BASE AND MERIDIAN
NORTH SALT LAKE CITY

PREFIX
06-309

LAST #
0004

N

SCALE:
1" = 200'



Legend

⊙ MONUMENT TO BE SET

Notes:

1. ALL EASEMENTS SHOWN ARE TYPICAL 10 FOOT WIDE PUBLIC UTILITY EASEMENTS (P.U.E.) UNLESS OTHERWISE NOTED.
2. ALL COORDINATES SHOWN ARE BASED ON DAVIS COUNTY SURVEYOR'S OFFICE DATUM.
3. APPROVAL OF THIS DEVELOPMENT PLAT BY NORTH SALT LAKE CITY DOES NOT CONSTITUTE ANY REPRESENTATION AS TO THE ADEQUACY OF SUB-SURFACE SOIL CONDITION NOR THE LOCATION OR DEPTH OF GROUNDWATER TABLES.

- ① FedEx Ground Package System Inc - 0001
- ② Fed Ex Ground Package System Inc - 0002
- ③ Fed Ex Ground Package System Inc - 0004

PREPARED BY

ESI ENGINEERING, INC.
3500 SOUTH MAIN STREET
SUITE 206
SALT LAKE CITY, UTAH 84115
(801)263-1752

CURVE TABLE

CURVE	RADIUS	LENGTH	TANGENT	CHORD	DELTA	CHORD BRG.
(A)	55.00	233.51	93.66	93.66	243° 15' 33"	S37° 36' 08" E
(B)	55.00	96.42	66.07	84.54	100° 26' 44"	N70° 59' 27" E
(C)	55.00	137.09	163.49	104.26	142° 48' 49"	N12° 37' 14" E
(D)	25.00	27.60	15.40	26.22	63° 15' 33"	N52° 23' 52" E
(E)	1422.97	101.66	50.85	101.64	4° 05' 37"	N16° 32' 34" E

DEVELOPMENT: ALLEN BUSINESS PARK

CITY: NORTH SALT LAKE LOTS: 1 THRU 4

NE 1/4 OF SEC. 02, T. 1N, R. 1W

S.L.M. DAVIS COUNTY, UTAH

FILE # 4851
R 07-14-08