

WESTSIDE INDUSTRIAL PARK, LOT 2 AMENDED

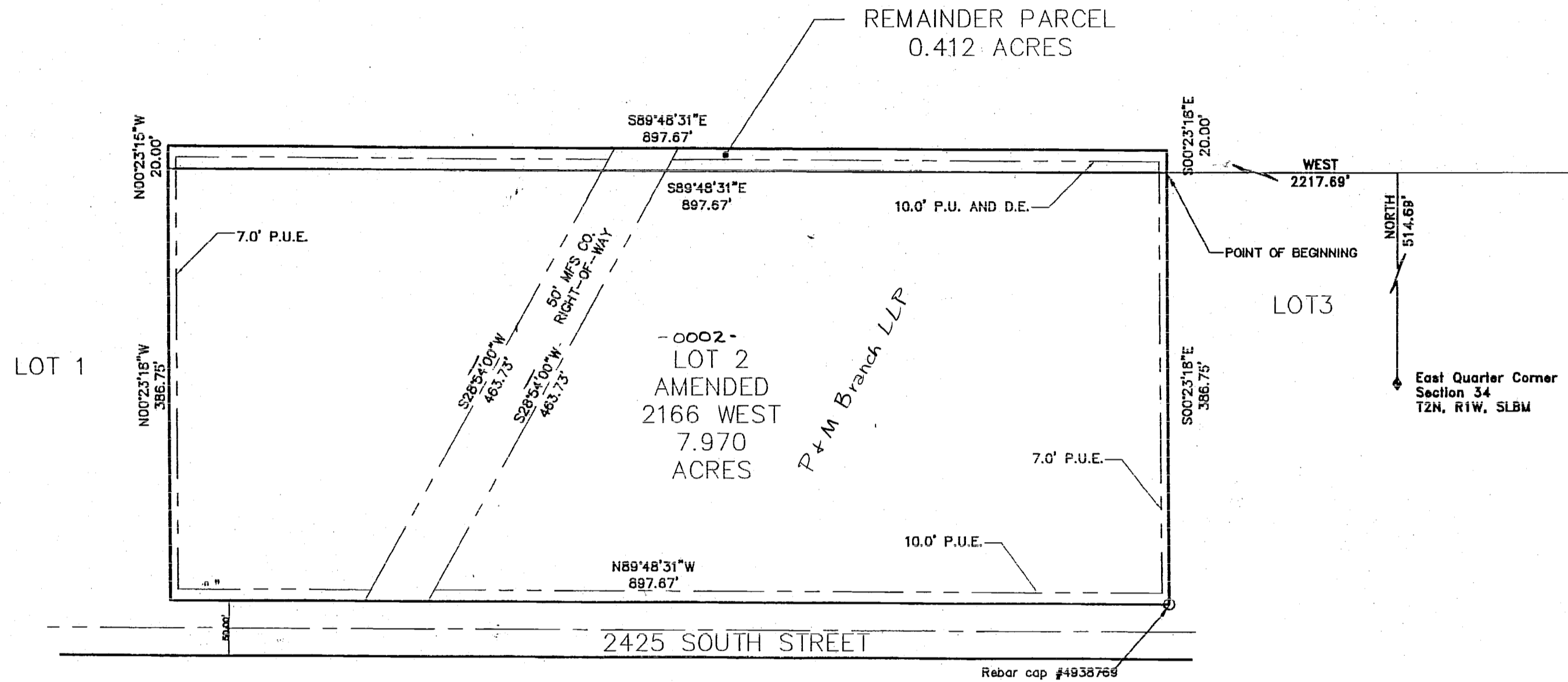
LOCATED IN THE NORTH HALF OF SECTION 34, TOWNSHIP 2 NORTH, RANGE 1 WEST, SALT LAKE BASE AND
MERIDIAN, U.S. SURVEY. WOODS CROSS CITY, DAVIS COUNTY, UTAH

PREFIX
06-307

LAST #
0002



SCALE:
1" = 200'



DEVELOPMENT: WESTSIDE INDUSTRIAL PARK LOT 2 AMENDED

CITY: WOODS CROSS LOTS: 2 AMENDED

LEGEND

- ◆ SECTION CORNER
- ⊕ STREET MONUMENT
- FOUND REBAR (CAP ILLEGIBLE)
- △ FOUND J-U-B ENGINEERS REBAR & CAP
- SET 5/8" x 24" REBAR AND CAP STAMPED J-U-B ENGINEERS

PREPARED BY



Engineers • Surveyors • Planners

466 NORTH 900 WEST
KAYSVILLE, UTAH 84037
801-547-0393
PROJECT #5507008
JAN 2008

N 1/2 OF SEC. 34, T.2N, R. 1W
LOT 2 WESTSIDE INDUSTRIAL PARK
S.L.M. DAVIS COUNTY, UTAH

FILE # 4807
R.04-02-08

301

06