

306

06

FOXBORO NORTH PLAT 5A

A SUBDIVISION LOCATED IN THE SOUTHWEST 1/4 OF SECTION 34, TOWNSHIP 2 NORTH, RANGE 1 WEST, SALT LAKE BASE AND MERIDIAN, CITY OF NORTH SALT LAKE, DAVIS COUNTY, UTAH

PREFIX
06-306
LAST #
0003



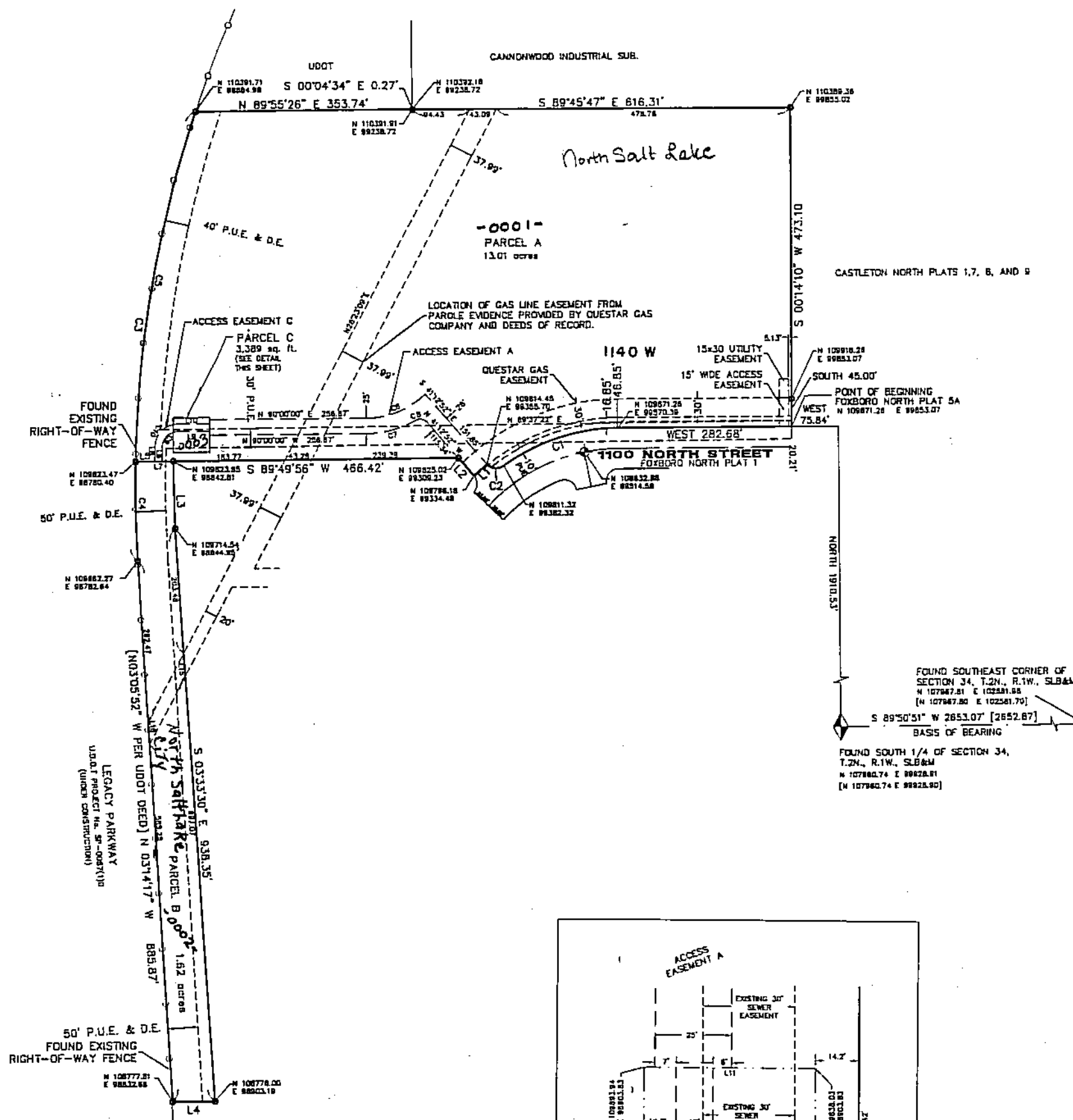
SCALE:
1" = 200'

DEVELOPMENT: FOXBORO NORTH PLAT 5A
CITY: NORTH SALT LAKE LOTS: PARCELS A THRU C

SW 1/4 OF SEC. 34, T.2N, R. 1W
S.L.M. DAVIS COUNTY, UTAH

FILE # 4804
R 03-25-08

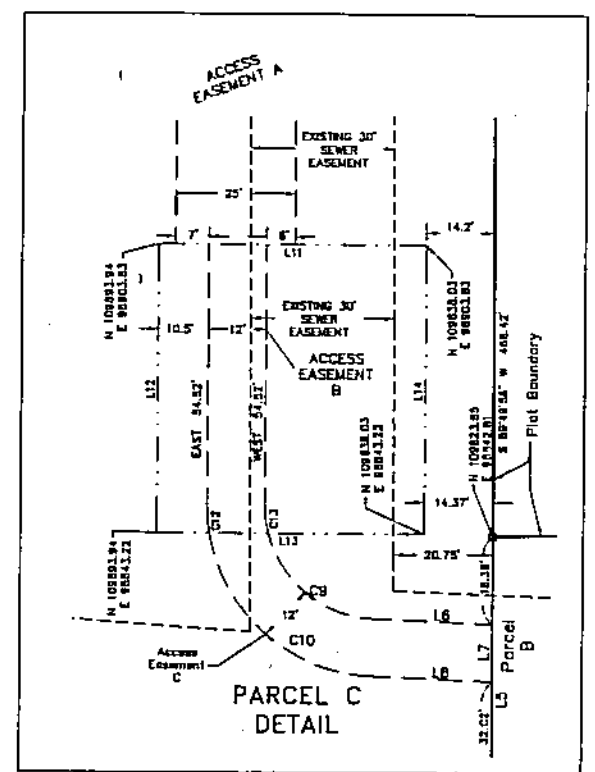
Parcel C South Davis Sewer District 0003
1150 W. 1100 N.



- NOTES
- 1.) Bear Lot corners will be located and marked on the ground with a 5/8" rebar with a plastic cap labeled "BINGHAM ENG". Front lot corners will not be marked on the ground but the extension of the side lot line to the top of curb will be located and marked by a pin or rivet fast into the top of the curb.
 - 2.) All public utility easements shown hereon are 10.00 feet wide unless otherwise noted.
 - 3.) The coordinates shown hereon are based on the Datum of the Davis County Surveyor. Record bearings, distances and coordinate values are shown in brackets []. All other dimensions and coordinate values are measured.
 - 4.) Approval of this development plat by North Salt Lake City does not constitute any representation as to the adequacy of subsurface soil condition nor the location or depth of groundwater tables.
 - 5.) Parcel A shall be retained by Partiale Development for future sale.
 - 6.) Parcel B shall be transferred to the City of North Salt Lake for open space associated with the Foxboro North Development and to operate and maintain the drainage collection and detention facilities constructed within the parcel, ~~from construction at 4.5 Plat.~~
 - 7.) Parcel C shall be retained by Partiale Development for future sale.
 - 8.) Access Easement A located within Parcel A shall be associated with, and grant access to Parcel B and C. Limited access shall also be granted to the Utah Department of Transportation and to Questar Gas Company.
 - 9.) Access Easement B located within Parcel C shall be associated with, and grant access to Parcel B. Limited access shall also be granted to the Utah Department of Transportation and to Questar Gas Company.
 - 10.) Access Easement C located within Parcel A shall be associated with, and grant access to Parcel B. Limited access shall also be granted to the Utah Department of Transportation, South Davis Sewer District and to Questar Gas Company.
 - 11.) An Access Easement covering all of Parcel B shall be granted to Questar Gas Company, South Davis Sewer District, the Utah Department of Transportation and the City of North Salt Lake. The Easement shall grant access to the drainage improvements and sewer and gas mains located within said Parcel.

LINE	BEARING	LENGTH
L1	S 49°16'25" W	28.00
L2	N 41°2'32" W	38.33
L3	S 01°02'27" E	109.13
L4	S 89°50'51" W	70.51
L5	S 89°49'56" W	62.41
L6	S 02°04'57" W	24.73
L7	S 89°49'56" W	12.01
L8	N 02°04'55" E	25.30
L9	S 90°00'00" W	54.52
L10	N 90°00'00" E	54.52
L11	S 00°00'00" E	55.91
L12	S 90°00'00" E	60.81
L13	N 00°00'00" E	55.91
L14	N 90°00'00" W	60.81
L15	S 03°33'30" E	37.80
L16	S 03°14'17" E	38.14

CURVE	LENGTH	RADIUS	DELTA	CHORD	CHORD DIST.
C1	260.56	325.00	35°21'28"	S 72°19'16" W	197.39
C2	23.37	20.00	84°06'56"	N 6°51'10" W	28.80
C3	741.32	1892.08	72°28'55"	N 02°59'11" E	736.58
C4	181.27	1892.08	4°53'01"	S 08°47'48" E	161.22
C5	580.05	1892.08	17°33'54"	S 10°28'41" W	577.70
C6	105.09	137.50	43°47'21"	N 68°06'19" E	102.55
C7	82.83	152.50	38°14'29"	N 75°22'46" E	82.04
C8	20.43	15.00	78°01'36"	N 80°13'41" W	18.89
C9	30.67	24.00	73°12'56"	S 38°41'25" W	28.62
C10	48.12	36.00	78°10'55"	S 41°10'03" W	43.40
C12	6.12	36.00	7°44'30"	S 85°07'45" W	6.11
C13	6.18	24.00	14°22'07"	S 82°30'56" W	6.14



- LEGEND:
- ◆ FOUND DAVIS COUNTY SECTION CORNER MONUMENTS (AS NOTED)
 - ⊕ STREET MONUMENT (TO BE SET)
 - ⊙ STREET MONUMENT (SET BY PREVIOUS PLATTING)
 - SET REBAR W/ CAP MARKED "BINGHAM ENG."
 - SUBDIVISION BOUNDARY LINE
 - LOT LINE
 - SECTION LINE
 - RIGHT-OF-WAY LINE
 - CENTERLINE
 - ACCESS EASEMENT LINE AS NOTED
 - UTILITY EASEMENT LINE AS NOTED
 - EXISTING FENCE
 - RECORD COORDINATE VALUES AND/OR RECORD DIMENSIONS ARE SHOWN IN BRACKETS
 - PUBLIC UTILITY AND DRAINAGE EASEMENT

