

WESTSIDE INDUSTRIAL PARK NO. 3 AMENDED

WOODS CROSS

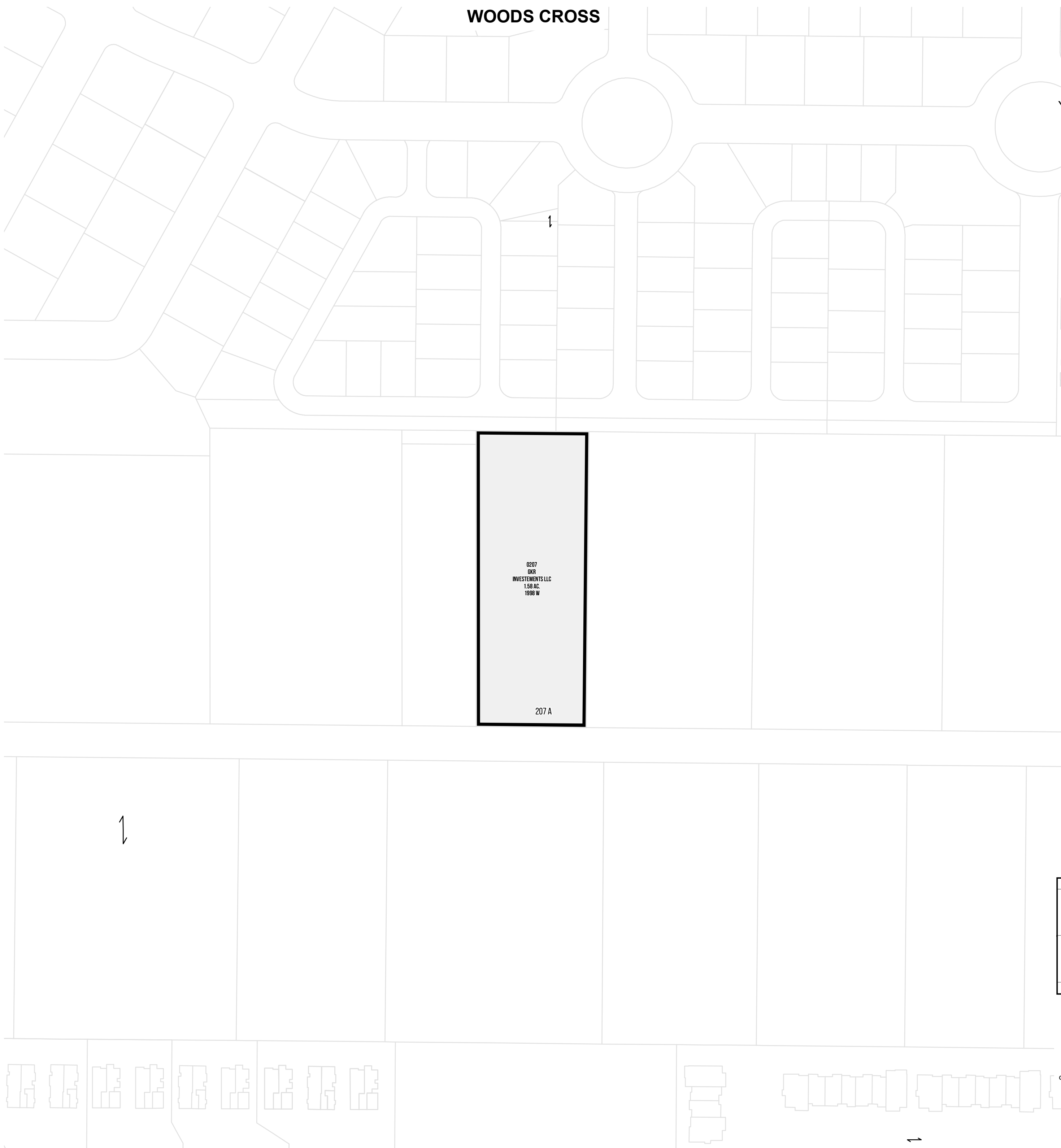
Tax ID Prefix

06-284

Plat ID: 4699

Sheet 1 of 2

Year Recorded: 2007



0207
GKR
INVESTMENTS LLC
1.58 AC.
1998 W

207 A



1 inch = 100 feet

NW 34 2N 1W 06082	NE 34 2N 1W 06082	NW 35 2N 1W 06083
SW 34 2N 1W 06082	SE 34 2N 1W 06082	SW 35 2N 1W 06085

S L B & M

NOTE: Distance, bearings and radius values are approximate. User needs to refer to the recorded legal descriptions for exact bearing and distances. For cadastral or technical information, see the dedicated plat and or legal descriptions in recorded documents.



WESTSIDE INDUSTRIAL PARK NO. 3 AMENDED

WOODS CROSS

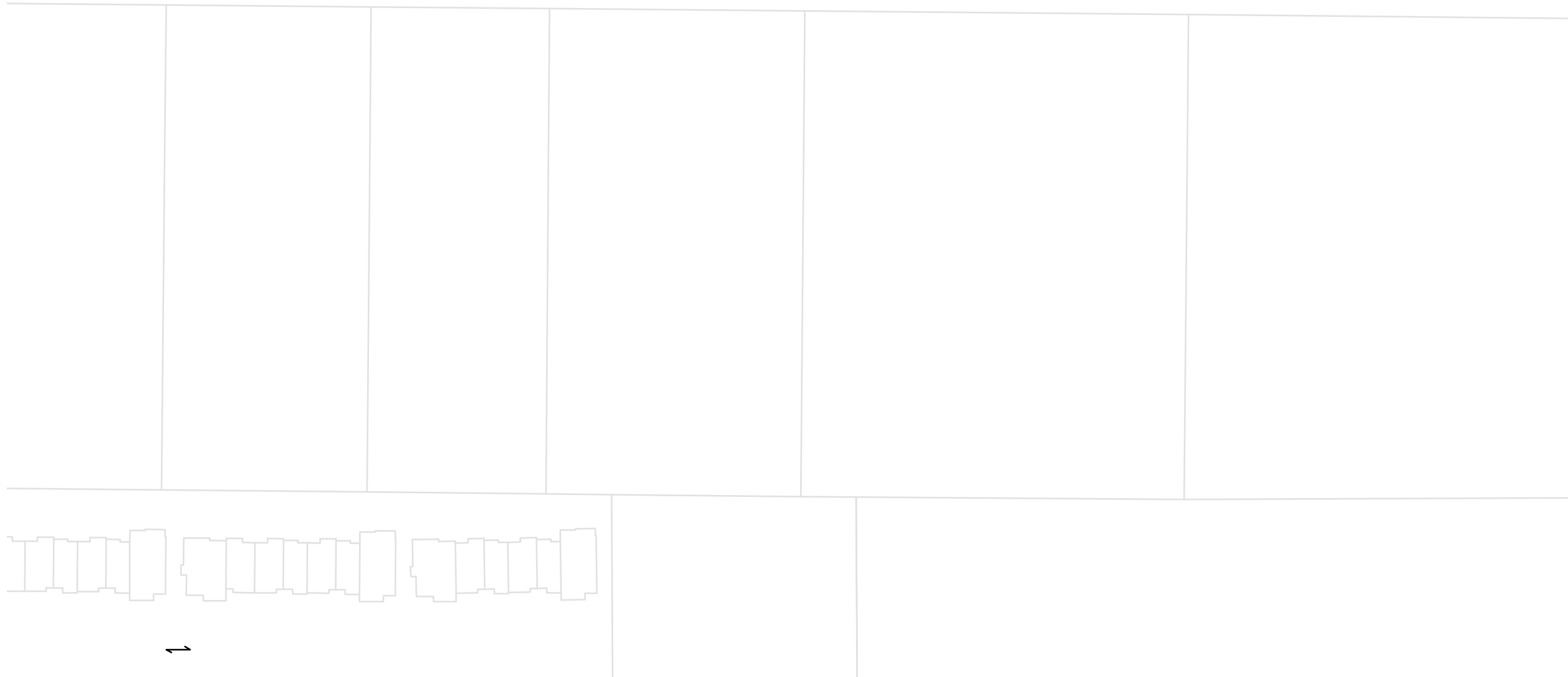
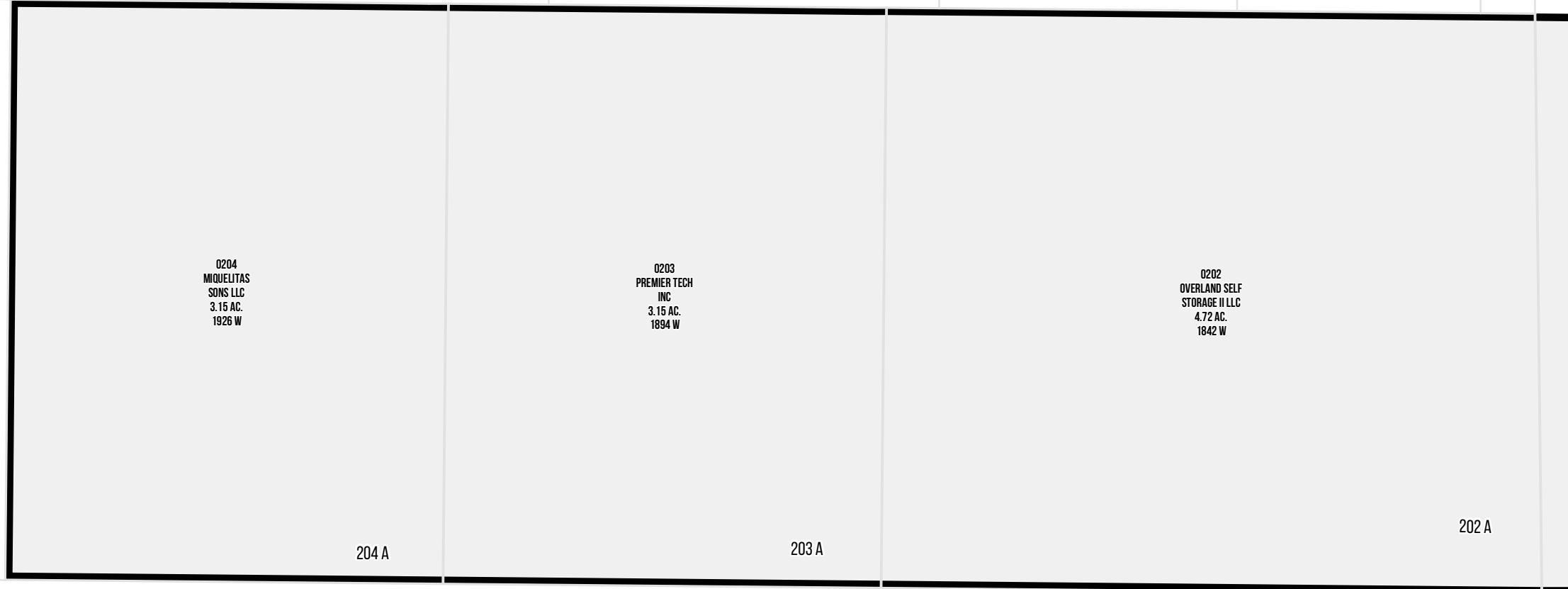
Tax ID Prefix

06-284

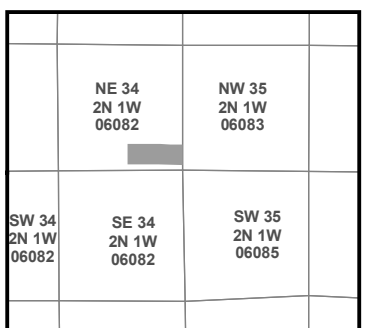
Plat ID: 4699

Sheet 2 of 2

Year Recorded: 2007



1 inch = 100 feet



S L B & M

NOTE: Distance, bearings and radius values are approximate. User needs to refer to the recorded legal descriptions for exact bearing and distances. For cadastral or technical information, see the dedicated plat and or legal descriptions in recorded documents.

