

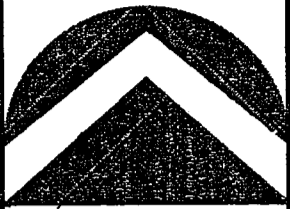
# FOXBORO NORTH PLAT 1

A SUBDIVISION LOCATED IN THE SOUTH HALF OF SECTION 34, TOWNSHIP 2 NORTH, RANGE 1 WEST, SALT LAKE BASE AND MERIDIAN, CITY OF NORTH SALT LAKE, DAVIS COUNTY, UTAH

PREFIX  
06-267

LAST #  
PG 1 OF 3

N

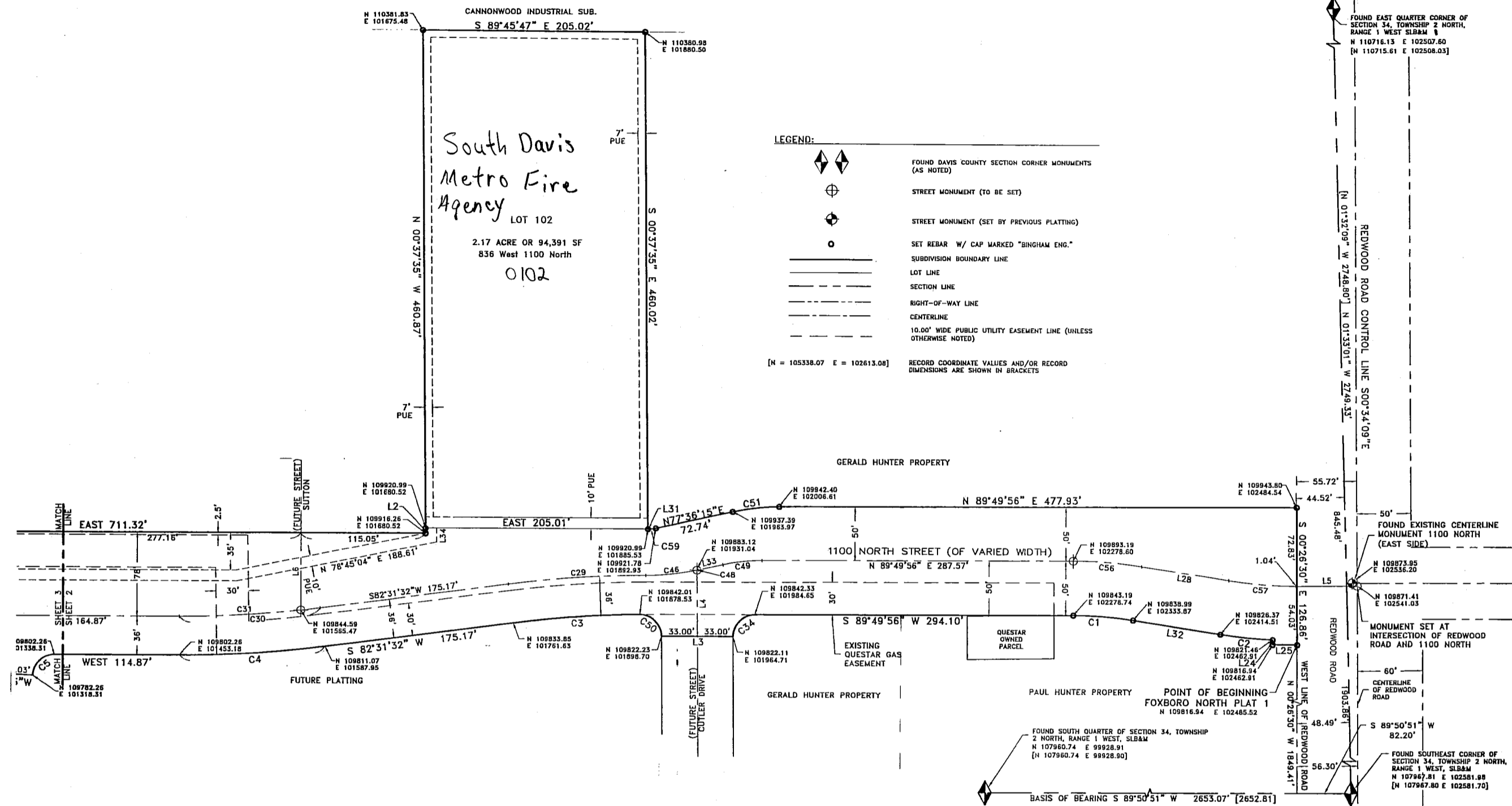


SCALE:  
1" = 100'

DEVELOPMENT: FOXBORO NORTH PLAT 1  
CITY: NORTH SALT LAKE  
LOTS: 101 THRU 102

S 1/2 OF SEC. 34, T.2N, R. 1W  
S.L.M. DAVIS COUNTY, UTAH

FILE # 4552  
R 12-04-06



**LEGEND:**

- ◆ FOUND DAVIS COUNTY SECTION CORNER MONUMENTS (AS NOTED)
- ⊕ STREET MONUMENT (TO BE SET)
- STREET MONUMENT (SET BY PREVIOUS PLATTING)
- SET REBAR W/ CAP MARKED "BINGHAM ENG."
- SUBDIVISION BOUNDARY LINE
- LOT LINE
- SECTION LINE
- RIGHT-OF-WAY LINE
- CENTERLINE
- 10.00' WIDE PUBLIC UTILITY EASEMENT LINE (UNLESS OTHERWISE NOTED)

[N = 105338.07 E = 102613.06] RECORD COORDINATE VALUES AND/OR RECORD DIMENSIONS ARE SHOWN IN BRACKETS

LINE	BEARING	DISTANCE
L1	N 49°16'25" E	28.00
L2	N 00°00'00" E	4.72
L3	N 89°54'15" W	66.01
L4	S 00°37'35" E	60.96
L5	N 89°33'22" E	55.92
L6	S 00°00'00" E	71.68
L8	S 00°00'00" W	54.50
L9	S 00°00'00" E	53.00
L10	S 00°00'00" W	53.00
L11	S 00°00'00" E	53.00
L12	S 00°00'00" W	84.29
L13	N 00°00'00" W	78.00
L14	S 00°00'00" E	53.00
L15	N 00°00'00" E	78.00
L16	S 00°00'00" E	53.00
L17	S 11°01'08" E	57.27
L24	N 00°00'00" W	4.52
L25	N 90°00'00" W	22.61
L28	S 81°06'30" E	81.62
L31	S 90°00'00" E	0.10
L32	N 81°06'30" W	81.62
L33	S 77°36'15" W	23.36
L34	S 00°00'00" W	12.93

CURVE	DELTA	RADIUS	LENGTH
C1	9°03'34"	350.00	55.34
C2	6°11'52"	450.00	48.68
C3	6°58'09"	964.00	117.26
C4	7°28'28"	1036.00	135.15
C5	90°00'00"	20.00	31.42
C6	90°00'00"	20.00	31.42
C7	90°00'00"	20.00	31.42
C8	90°00'00"	20.00	31.42
C9	90°00'00"	20.00	31.42
C10	90°00'00"	20.00	31.42
C11	90°00'00"	20.00	31.42
C12	90°00'00"	20.00	31.42
C13	51°31'17"	37.00	33.27
C14	17°10'53"	75.50	22.64
C15	55°39'36"	22.00	21.37
C16	51°31'17"	37.00	33.27
C17	17°10'53"	75.50	22.64
C18	55°39'36"	22.00	21.37
C19	90°00'00"	20.00	31.42
C20	90°00'00"	20.00	31.42
C21	90°00'00"	20.00	31.42
C22	90°00'00"	20.00	31.42
C23	101°01'08"	20.00	35.26
C24	100°51'10"	20.00	35.20
C25	24°57'53"	259.00	112.85
C26	84°32'43"	20.00	29.51
C27	84°08'36"	20.00	29.37
C28	35°21'28"	325.00	200.56
C29	7°17'21"	1000.00	127.22
C30	7°28'28"	1000.00	130.45
C31	6°28'50"	1000.00	112.52
C32	46°44'36"	292.00	238.22
C33	11°01'08"	292.00	56.16
C34	90°27'31"	20.00	31.58
C46	11°54'51"	228.92	47.60
C48	0°17'47"	228.92	1.18
C49	12°13'41"	170.08	36.30
C50	89°52'44"	20.00	31.37
C51	11°24'26"	216.00	43.00
C56	9°03'34"	400.00	63.25
C57	8°53'30"	400.00	62.07
C59	12°23'45"	34.00	7.36
C60	34°30'10"	37.00	22.28
C61	18°28'16"	75.50	24.34
C62	55°39'36"	22.00	21.37
C63	51°31'17"	37.00	33.27
C64	18°35'35"	75.50	24.50
C65	47°01'41"	22.00	18.06

**NOTES**

- 1.) Rear lot corners will be located and marked on the ground with a 5/8" rebar with a plastic cap labeled "BINGHAM ENG". Front lot corners will be not be marked on the ground but the extension of the side lot line to the top of curb will be located and marked by a pin or rivet inset into the top of the curb.
- 2.) All public utility easements shown hereon are 10.00 feet wide unless otherwise noted.
- 3.) The coordinates shown hereon are based on the datum of the Davis County Surveyor. Record bearings, distances and coordinate values are shown in brackets [ ]. All others dimensions and coordinate values are measured.
- 4.) Approval of this development plat by North Salt Lake City does not constitute any representation as to the adequacy of subsurface soil condition nor the location or depth of groundwater tables.
- 5.) The finished floor elevation of any home shall be at least one (1) foot above the lowest top back of curb grade adjacent to the lot.

**BINGHAM ENGINEERING**  
5160 Wiley Post Way, Salt Lake City, Ut 84116  
(801) 532-2520 www.binghamnet.com

2011043

00

FOXBORO NORTH PLAT 1

A SUBDIVISION LOCATED IN THE SOUTH HALF OF SECTION 34, TOWNSHIP 2 NORTH, RANGE 1 WEST, SALT LAKE BASE AND MERIDIAN, CITY OF NORTH SALT LAKE, DAVIS COUNTY, UTAH

PREFIX  
06-267

LAST #  
PG 2 OF 3

N



SCALE:  
1" = 100'

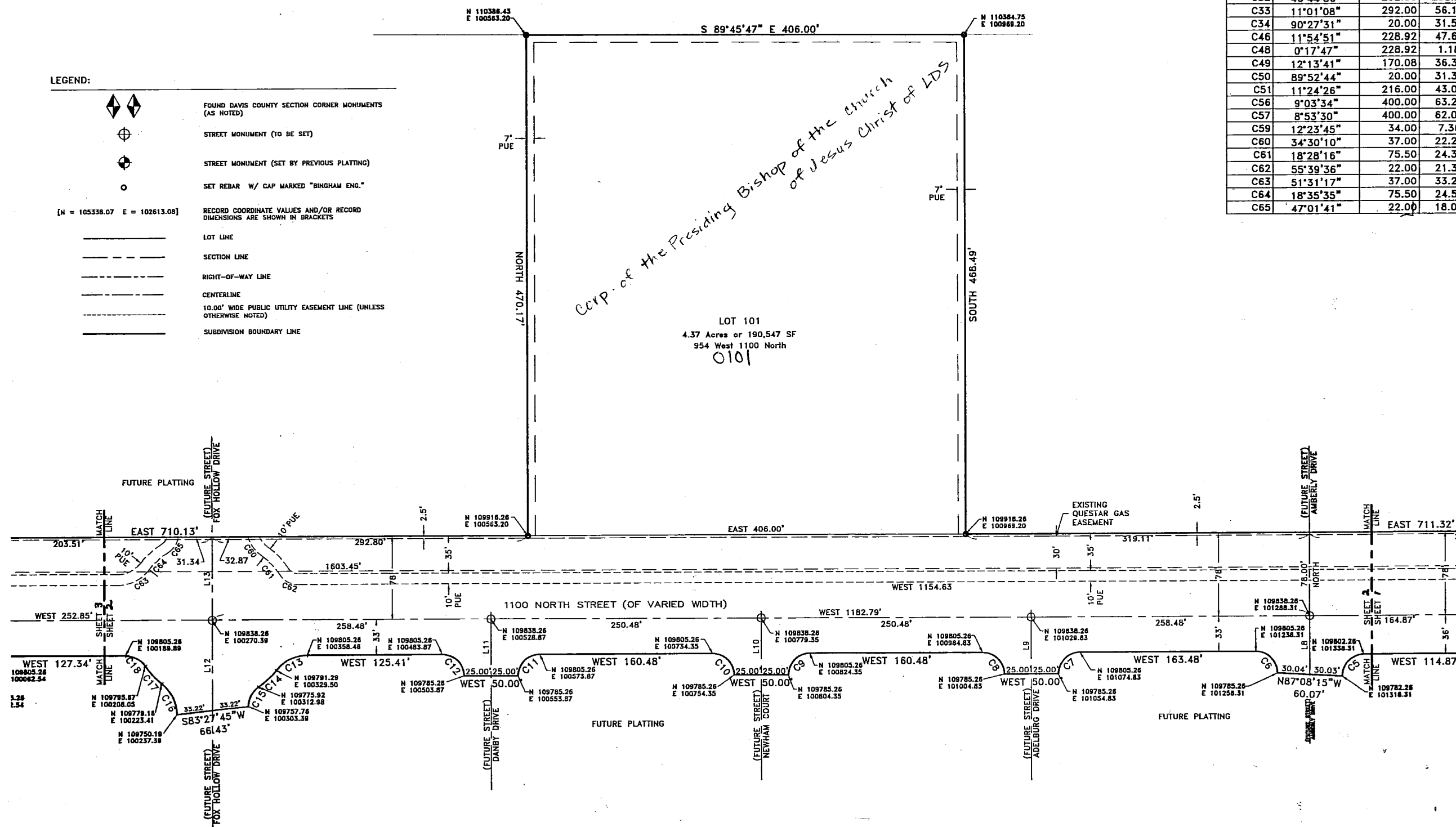
DEVELOPMENT: FOXBORO NORTH PLAT 1  
CITY: NORTH SALT LAKE LOTS: 101 THRU 102

S 1/2 OF SEC. 34, T.2N, R. 1W  
S.L.M. DAVIS COUNTY, UTAH

LINE	BEARING	DISTANCE
L1	N 49°16'25" E	28.00
L2	N 00°00'00" E	4.72
L3	N 89°54'15" W	66.01
L4	S 00°37'35" E	60.96
L5	N 89°33'22" E	55.92
L6	S 00°00'00" E	71.68
L8	S 00°00'00" W	54.50
L9	S 00°00'00" E	53.00
L10	S 00°00'00" W	53.00
L11	S 00°00'00" E	53.00
L12	S 00°00'00" W	84.29
L13	N 00°00'00" W	78.00
L14	S 00°00'00" E	53.00
L15	N 00°00'00" E	78.00
L16	S 00°00'00" E	53.00
L17	S 11°01'08" E	57.27
L24	N 00°00'00" W	4.52
L25	N 90°00'00" W	22.61
L28	S 81°06'30" E	81.62
L31	S 90°00'00" E	0.10
L32	N 81°06'30" W	81.62
L33	S 77°36'15" W	23.36
L34	S 00°00'00" W	12.93

CURVE	DELTA	RADIUS	LENGTH
C1	9°03'34"	350.00	55.34
C2	6°11'52"	450.00	48.68
C3	6°58'09"	964.00	117.26
C4	7°28'28"	1036.00	135.15
C5	90°00'00"	20.00	31.42
C6	90°00'00"	20.00	31.42
C7	90°00'00"	20.00	31.42
C8	90°00'00"	20.00	31.42
C9	90°00'00"	20.00	31.42
C10	90°00'00"	20.00	31.42
C11	90°00'00"	20.00	31.42
C12	90°00'00"	20.00	31.42
C13	51°31'17"	37.00	33.27
C14	17°10'53"	75.50	22.64
C15	55°39'36"	22.00	21.37
C16	51°31'17"	37.00	33.27
C17	17°10'53"	75.50	22.64
C18	55°39'36"	22.00	21.37
C19	90°00'00"	20.00	31.42
C20	90°00'00"	20.00	31.42
C21	90°00'00"	20.00	31.42
C22	90°00'00"	20.00	31.42
C23	101°01'08"	20.00	35.28
C24	100°51'10"	20.00	35.20
C25	24°57'53"	258.00	112.85
C26	84°32'43"	20.00	29.51
C27	84°08'36"	20.00	29.37
C28	35°21'28"	325.00	200.56
C29	7°17'21"	1000.00	127.22
C30	7°28'28"	1000.00	130.45
C31	6°26'50"	1000.00	112.52
C32	46°44'36"	292.00	238.22
C33	11°01'08"	292.00	56.16
C34	90°27'31"	20.00	31.58
C46	11°54'51"	228.92	47.60
C48	0°17'47"	228.92	1.18
C49	12°13'41"	170.08	36.30
C50	89°52'44"	20.00	31.37
C51	11°24'26"	216.00	43.00
C56	9°03'34"	400.00	63.25
C57	8°53'30"	400.00	62.07
C59	12°23'45"	34.00	7.36
C60	34°30'10"	37.00	22.28
C61	18°28'16"	75.50	24.34
C62	55°39'36"	22.00	21.37
C63	51°31'17"	37.00	33.27
C64	18°35'35"	75.50	24.50
C65	47°01'41"	22.00	18.06

- LEGEND:
- FOUND DAVIS COUNTY SECTION CORNER MONUMENTS (AS NOTED)
  - STREET MONUMENT (TO BE SET)
  - STREET MONUMENT (SET BY PREVIOUS PLATTING)
  - SET REBAR W/ CAP MARKED "BINGHAM ENG."
  - RECORD COORDINATE VALUES AND/OR RECORD DIMENSIONS ARE SHOWN IN BRACKETS
  - LOT LINE
  - SECTION LINE
  - RIGHT-OF-WAY LINE
  - CENTERLINE
  - 10.00' WIDE PUBLIC UTILITY EASEMENT LINE (UNLESS OTHERWISE NOTED)
  - SUBDIVISION BOUNDARY LINE



**B BINGHAM ENGINEERING**  
5160 Wiley Post Way, Salt Lake City, Ut 84116  
(801) 532-2520 www.binghamnet.com

FILE # 4552  
R 12-04-06

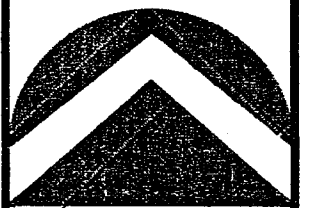
# FOXBORO NORTH PLAT 1

A SUBDIVISION LOCATED IN THE SOUTH HALF OF SECTION 34, TOWNSHIP 2 NORTH, RANGE 1 WEST, SALT LAKE BASE AND MERIDIAN, CITY OF NORTH SALT LAKE, DAVIS COUNTY, UTAH

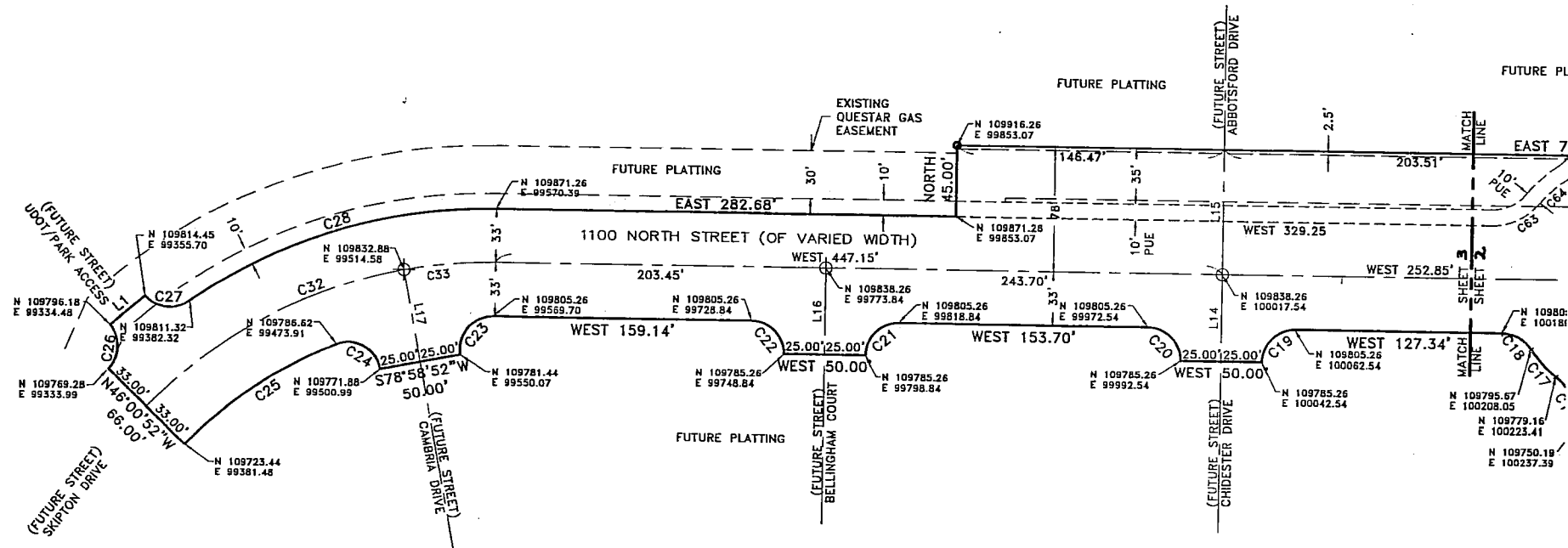
PREFIX  
06-267

LAST #  
PG 3 OF 3

N

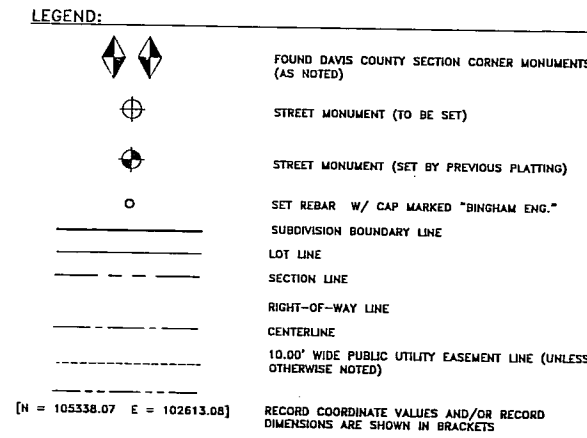


SCALE:  
1" = 100'



LINE	BEARING	DISTANCE
L1	N 49°16'25" E	28.00
L2	N 00°00'00" E	4.72
L3	N 89°54'15" W	66.01
L4	S 00°37'35" E	60.96
L5	N 89°33'22" E	55.92
L6	S 00°00'00" E	71.88
L8	S 00°00'00" W	54.50
L9	S 00°00'00" E	53.00
L10	S 00°00'00" W	53.00
L11	S 00°00'00" E	53.00
L12	S 00°00'00" W	84.29
L13	N 00°00'00" W	78.00
L14	S 00°00'00" E	53.00
L15	N 00°00'00" E	78.00
L16	S 00°00'00" E	53.00
L17	S 11°01'08" E	57.27
L24	N 00°00'00" W	4.52
L25	N 90°00'00" W	22.61
L28	S 81°06'30" E	81.62
L31	S 90°00'00" E	0.10
L32	N 81°06'30" W	81.62
L33	S 77°36'15" W	23.36
L34	S 00°00'00" W	12.93

CURVE	DELTA	RADIUS	LENGTH
C1	9°03'34"	350.00	55.34
C2	6°11'52"	450.00	48.68
C3	6°58'09"	964.00	117.26
C4	7°28'28"	1036.00	135.15
C5	90°00'00"	20.00	31.42
C6	90°00'00"	20.00	31.42
C7	90°00'00"	20.00	31.42
C8	90°00'00"	20.00	31.42
C9	90°00'00"	20.00	31.42
C10	90°00'00"	20.00	31.42
C11	90°00'00"	20.00	31.42
C12	90°00'00"	20.00	31.42
C13	51°31'17"	37.00	33.27
C14	17°10'53"	75.50	22.64
C15	55°39'36"	22.00	21.37
C16	51°31'17"	37.00	33.27
C17	17°10'53"	75.50	22.64
C18	55°39'36"	22.00	21.37
C19	90°00'00"	20.00	31.42
C20	90°00'00"	20.00	31.42
C21	90°00'00"	20.00	31.42
C22	90°00'00"	20.00	31.42
C23	101°01'08"	20.00	35.26
C24	100°51'10"	20.00	35.20
C25	24°57'53"	259.00	112.85
C26	84°32'43"	20.00	29.51
C27	84°08'36"	20.00	29.37
C28	35°21'28"	325.00	200.56
C29	7°17'21"	1000.00	127.22
C30	7°28'28"	1000.00	130.45
C31	6°26'50"	1000.00	112.52
C32	46°44'36"	292.00	238.22
C33	11°01'08"	292.00	56.16
C34	90°27'31"	20.00	31.58
C46	11°54'51"	228.92	47.60
C48	0°17'47"	228.92	1.18
C49	12°13'41"	170.08	36.30
C50	89°52'44"	20.00	31.37
C51	11°24'26"	216.00	43.00
C56	9°03'34"	400.00	63.25
C57	8°53'30"	400.00	62.07
C59	12°23'45"	34.00	7.36
C60	34°30'10"	37.00	22.28
C61	18°28'16"	75.50	24.34
C62	55°39'36"	22.00	21.37
C63	51°31'17"	37.00	33.27
C64	18°35'35"	75.50	24.50
C65	47°01'41"	22.00	18.06



DEVELOPMENT: FOXBORO NORTH PLAT 1

CITY: NORTH SALT LAKE LOTS: 101 THRU 102

S 1/2 OF SEC. 34, T.2N, R. 1W

S.L.M. DAVIS COUNTY, UTAH

**BINGHAM ENGINEERING**  
5160 Wiley Post Way, Salt Lake City, Ut 84116  
(801) 532-2520 www.binghamnet.com

FILE # 4552  
R 12-04-06