

# EVERGREEN BUSINESS PARK SUBDIVISION NO. 3

## CENTERVILLE

Tax ID Prefix

### 06-261

Plat ID: 4449

Sheet 1 of 1

Year Recorded: 2006

STOUT COMMERCIAL SUBDIVISION  
06-316  
4941

1400 West

EVERGREEN BUSINESS PARK  
06-144  
2598

50 South

0301  
STEEB MAC LLC  
0.478 AC.  
1367 W

301 302

0302  
GILES, MURT  
0.422 AC.  
1355 W

EVERGREEN BUSINESS PARK NO. 2  
06-196  
3483

CHARNELL PUD  
06-110  
1556

2350 North

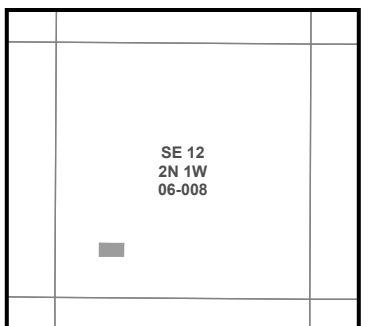
680 West



Parcel ID

Lot Number

1 inch = 40 feet



SLB & M

NOTE: Distance, bearings and radius values are approximate. User needs to refer to the recorded legal descriptions for exact bearing and distances. For cadastral or technical information, see the dedicated plat and or legal descriptions in recorded documents.

