

# VOLANTE EXECUTIVE HANGARS

## A UTAH CONDOMINIUM PROJECT

1953 SOUTH 1640 WEST  
WOODS CROSS, UTÁH DAVIS COUNTY

LOCATED IN THE NORTHWEST QUARTER OF SECTION 35, TOWNSHIP 2 NORTH, RANGE 1 WEST, SALT LAKE BASE AND MERIDIAN

PREF IX  
06-241

LAST #  
0005

N

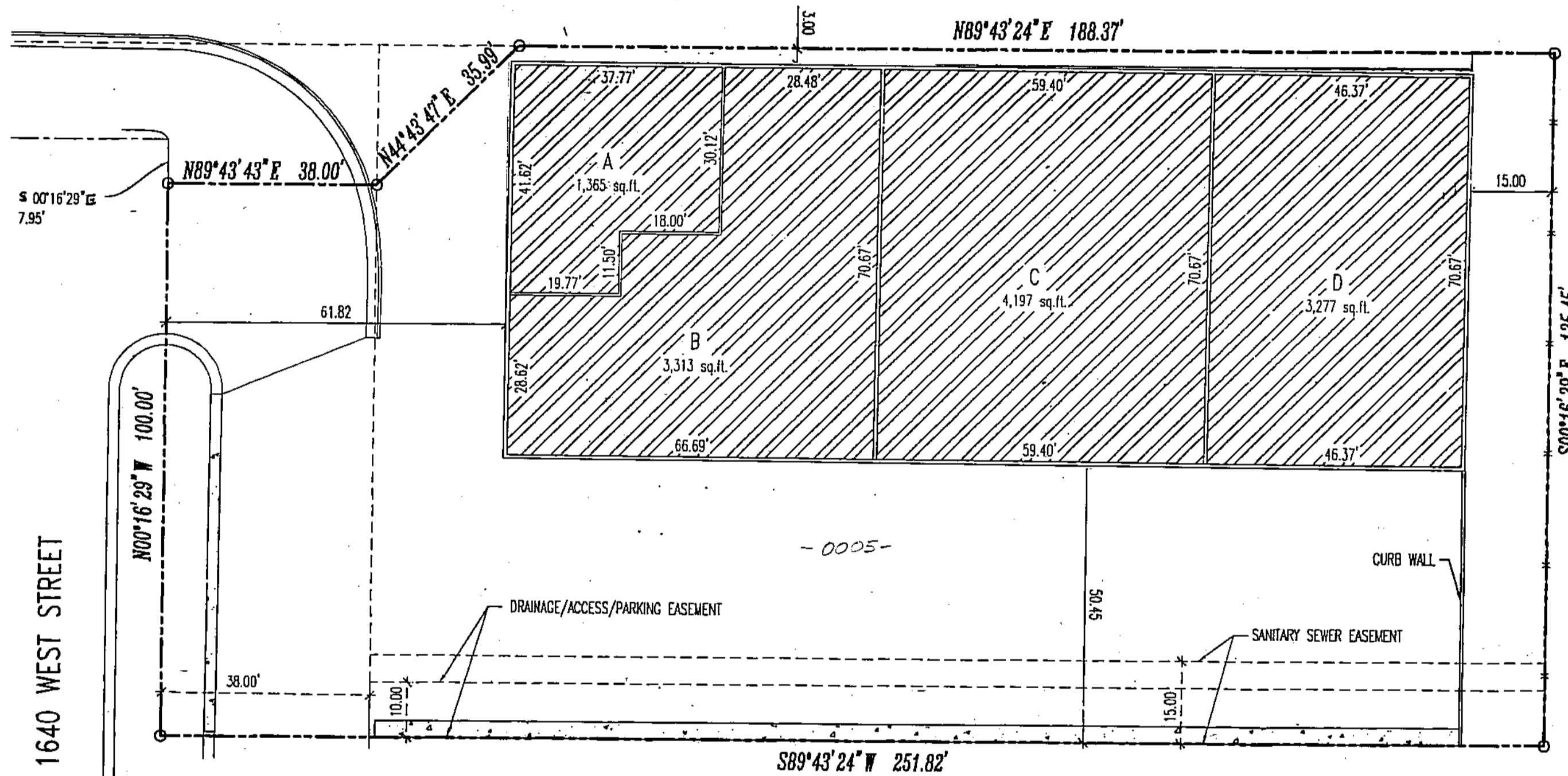


SCALE:  
1" = 20'

DEVELOPMENT: VOLANTE EXECUTIVE HANGARS CONDO  
CITY: WOODS CROSS UNITS: A, B, C, D & COMMON AREA

NW 1/4 OF SEC. 35, T.2N, R. 1W  
S.L.M. DAVIS COUNTY, UTAH

FILE # 4072  
R 07-19-04



RELEASE OF EASEMENT ENTRY 2807206

UNIT	OWNER	PID
A	Volante LC	0001
B	Volante LC	0002
C	Vincent P. Mancini	0003
D	James Roach	0004
Common Area	Assoc. of Unit Owners of Volante Executive Hangars	0005

### LEGEND

- BRASS CAP MONUMENT (RMC & LID)
- BOUNDARY CORNER  
SET 5/8" X 24" BAR W/ CAP OR NAIL  
AND WASHER STAMPED "M&L E-0001"
- MONUMENT LINE
- BOUNDARY LINE
- EASEMENT LINE
- LOT LINE
- PRIVATE OWNERSHIP
- COMMON AREA

ED BY: McNEIL ENGINEERING  
AND LAND SURVEYING, L.C.  
PROFESSIONAL CIVIL ENGINEERING  
&  
LAND SURVEYING SERVICES  
6895 SOUTH 900 EAST, MIDVALE, UTAH 84047  
(801) 255-7700

241

06