

# Hogan Office Park

A part of the Northeast 1/4 of Section 12, T2N, R1W, SLB&M, U.S. Survey  
Centerville City, Davis County, Utah

PREFIX #  
06-240

LAST #  
0007



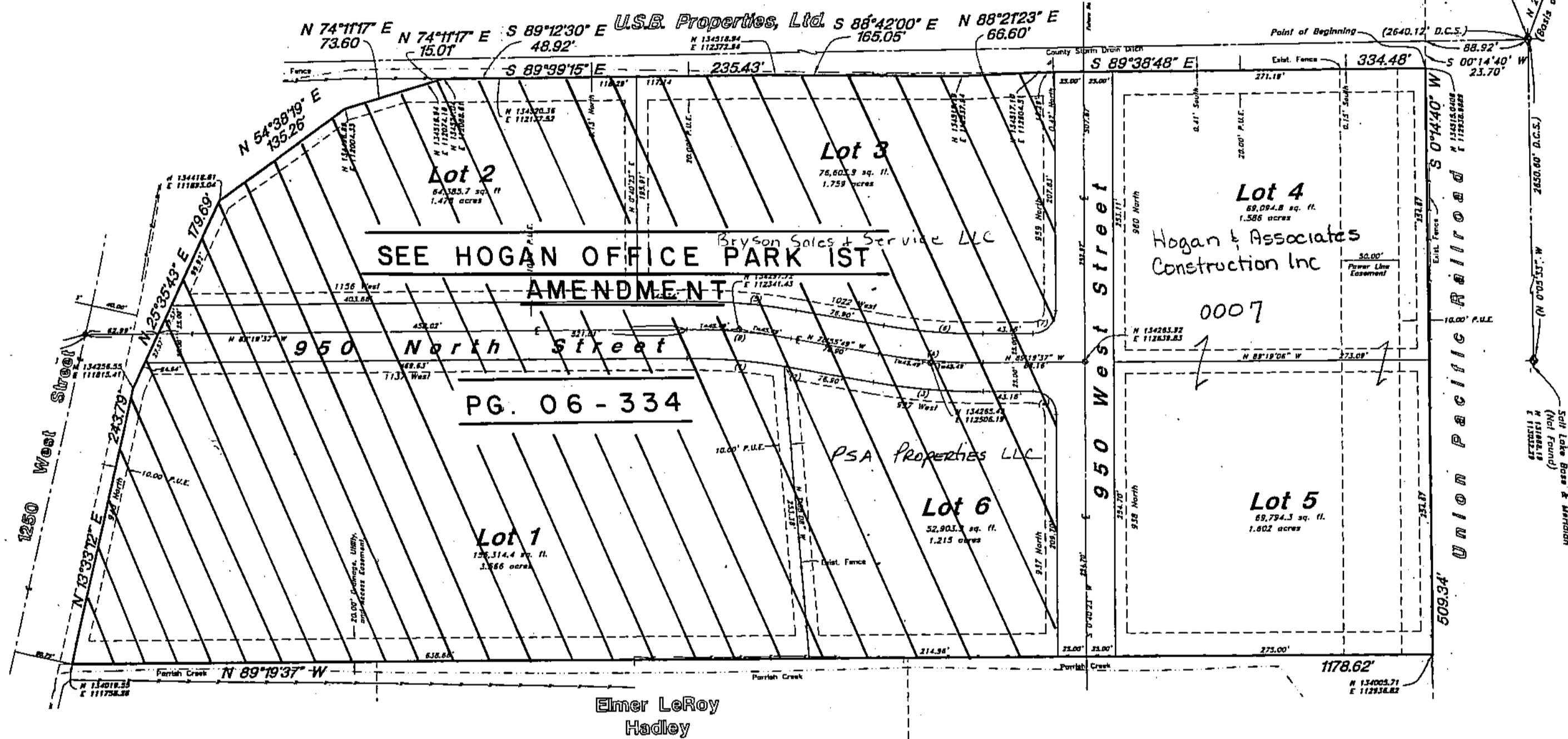
SCALE:  
1" = 200'

240

06

- Notes**
- Utility and Drainage Easements are 10 foot wide on the front, back, and side of lot lines unless otherwise indicated.
  - All coordinates shown are based on Davis County Surveyor's Office Datum.

Northeast Corner of Section 12,  
Township 2 North, Range 1 West,  
Salt Lake Base & Meridian  
(Found Brass Cap Monument)  
N 12453.78  
E 113022.01



PG. 06 - 334

Elmer LeRoy  
Hadley

**CURVE DATA**

(A)	(B)	(1)	(2)
A = 1023.48	A = 1023.48	A = 1029.00	A = 074.00
R = 305.00	R = 305.00	R = 475.00	R = 475.00
L = 90.73	L = 90.73	L = 84.24	L = 1.25
LC = 90.99	LC = 90.99	LC = 84.13	LC = 1.25
Bearing = S 89°59'15" E	Bearing = S 89°59'15" E	Bearing = N 84°14'57" W	Bearing = N 78°52'33" W

(3)	(4)	(5)	(6)	(7)
A = 1023.48	A = 1023.48	A = 1023.48	A = 1023.48	A = 90°00'00"
R = 305.00	R = 305.00	R = 305.00	R = 305.00	R = 305.00
L = 90.73	L = 31.45	L = 82.38	L = 84.18	L = 31.45
LC = 90.99	LC = 28.18	LC = 82.12	LC = 86.07	LC = 28.18
Bearing = S 89°59'15" E	Bearing = N 49°19'37" W	Bearing = N 84°14'57" W	Bearing = S 84°07'43" E	Bearing = N 49°19'37" W

**NARRATIVE:**  
This survey and subdivision plot was requested by Mr. Blake Davis for purposes of platting six (6) commercial lots. A Bearing Base North 21°13'02" East (Davis County Surveyor's Datum) between a Brass Cap Monument found at the Northeast corner of Section 12, Township 2 North, Range 1 West, and the Radar Tower at Farmington Peak was used.

- Legend**
- Set 3/8" Rebar (24" long) & cap w/ fencepost
  - Set Hub & Tack
  - ⊙ Monument to be set
  - (Rad.) Radial Line
  - (N/R) Non-Radial Line
  - (D.C.S.) Davis County Surveyor

DEVELOPMENT: HOGAN OFFICE PARK  
CITY: CENTERVILLE LOTS: 1 THRU 6

NE 1/4 OF SEC. 12, T.2N, R. 1W  
S.L.M. DAVIS COUNTY, UTAH