

Sports Sales Plaza Phase 3 Subdivision

INCLUDING ALL OF LOT 202 OF SPORT SALES PLAZA PHASE 2 SUBDIVISION
BEING A PART OF THE EAST HALF OF SECTION 12, T.2N., R.1W., S.L.B.&M.
CENTERVILLE CITY, DAVIS COUNTY, UTAH

PREFIX
06-220

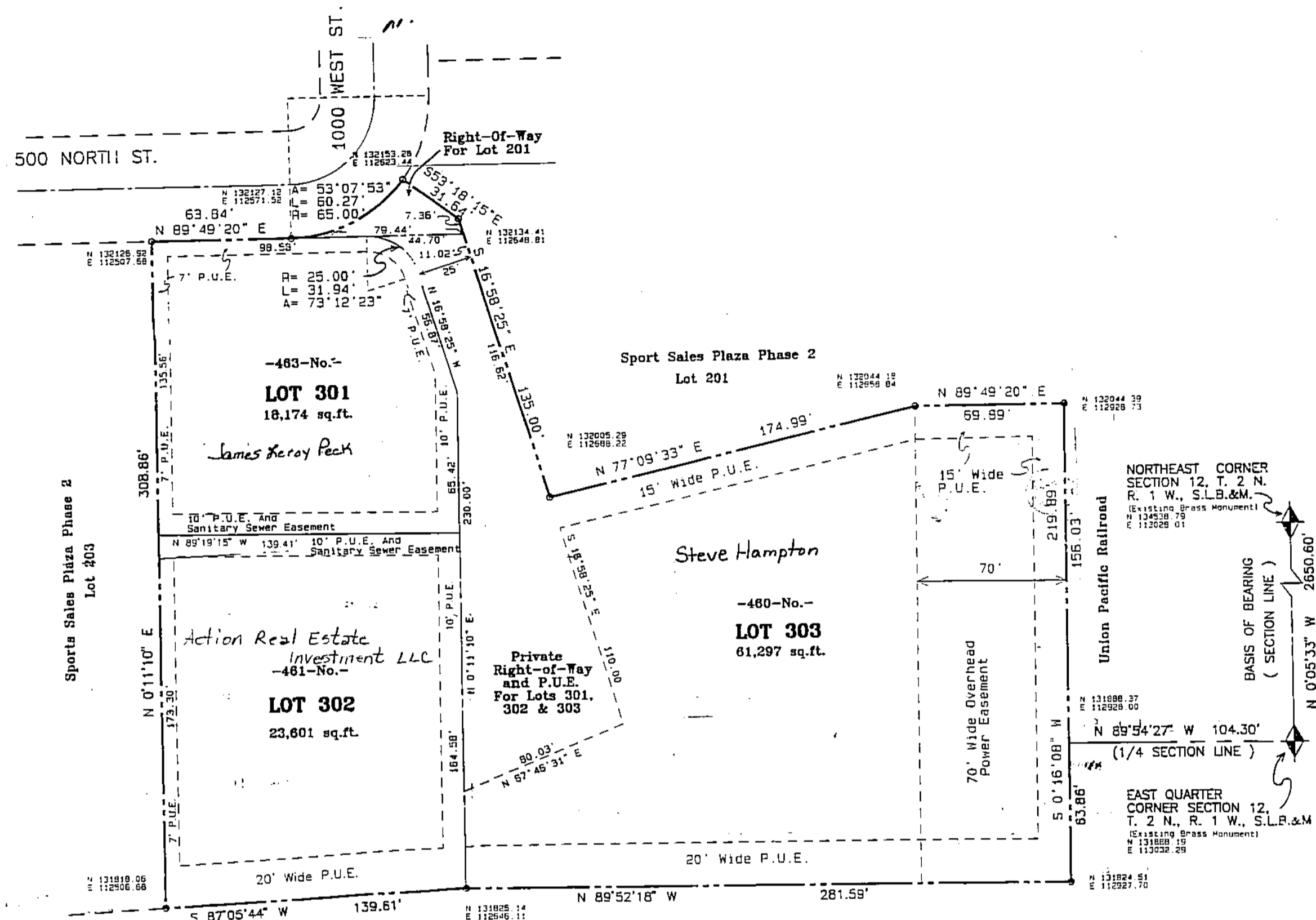
LAST #
0303

N

SCALE:
1" = 50'

220

06



DEVELOPMENT: SPORTS SALES PLAZA PHASE 3

CITY: CENTERVILLE (LOTS: 301 THRU 303)

202 SPORT SALES PLAZA PH. 2
E 1/2 SEC. 12, T.2N; R. 1W
S.L.B. DAVIS COUNTY, UTAH

Notes:

- All easements shown are typical 7 ft. wide Public Utility Easements (P.U.E.) unless otherwise noted.
- All coordinates shown are based on Davis County Surveyor's Office Datum.
- Approval of this development plat by Centerville City does not constitute any representation as to the accuracy of sub-surface soil conditions, the location or depth of groundwater tables.
- All property corners are marked with a 1/2 inch steel rebar and yellow surveyor's cap.

Narrative

PURPOSE OF SURVEY:
To subdivide property for owner.

BASIS OF ESTABLISHMENT:
Our instrument was set over the brass monument at the East Quarter Corner of Section 12 and the Section Corner to the North was sighted as the Basis of Bearing. From this point, all corners were radially located.

FOUND MONUMENTS:
Existing brass monuments were found at the East Quarter Corner and the Northeast Corner of Section 12, as shown.

Ballinger Engineering

FILE # 3764
R 11-15-02