

THACKER SUBDIVISION

WOODS CROSS

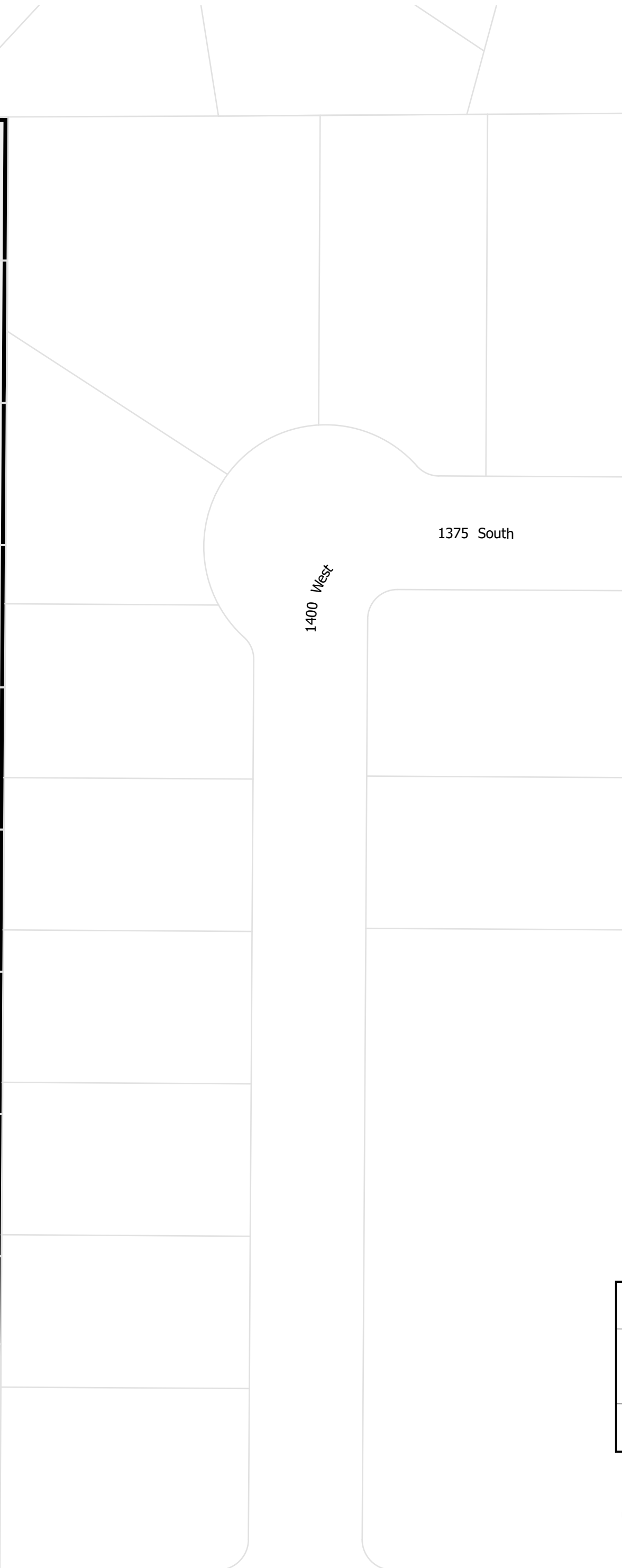
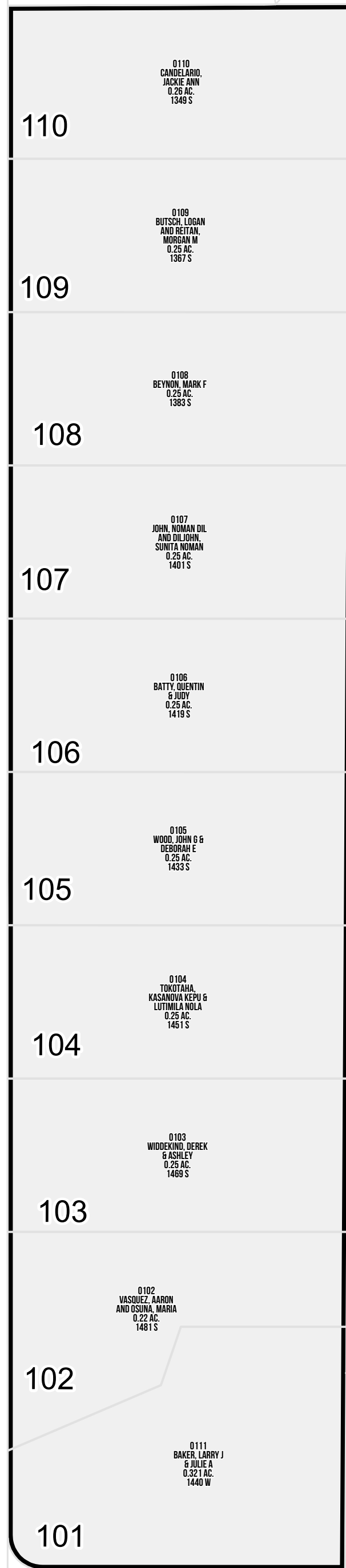
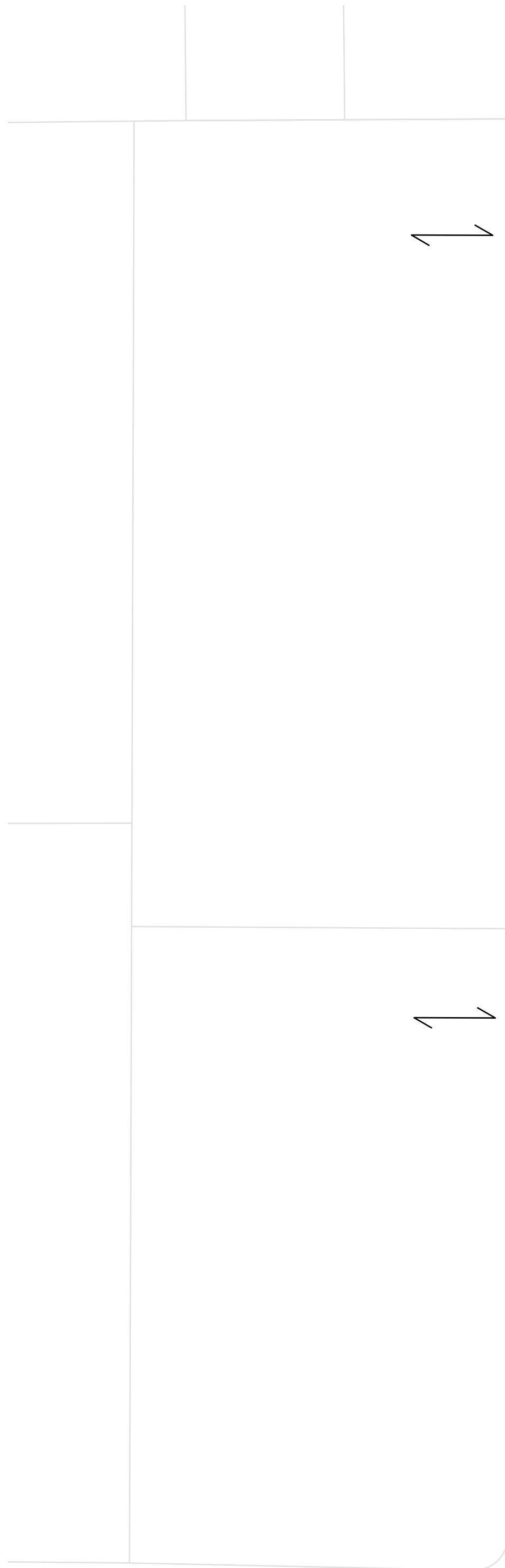
Tax ID Prefix

06-217

Plat ID: 3730

Sheet 1 of 1

Year Recorded: 2002



0110
CANDELARIO,
JACKIE ANN
0.26 AC.
1349 S

110

0109
BUTSCH, LOGAN
AND REITAN,
MORGAN M
0.26 AC.
1367 S

109

0108
BEYRON, MARK F
0.25 AC.
1383 S

108

0107
JOHN, NORMAN DIL
AND DILJOHN,
SUNYA NORMAN
0.25 AC.
1401 S

107

0106
BATTY, OUEWTH
& JUDY
0.25 AC.
1419 S

106

0105
WOOD, JOHN B &
DEBORAH E
0.25 AC.
1433 S

105

0104
TOKOTAH,
KASANDRA KEPU &
LUTIMILA NOLA
0.25 AC.
1451 S

104

0103
WIDDEKIND, DEREK
& ASHLEY
0.25 AC.
1469 S

103

0102
VASQUEZ, AARON
AND OSUNA, MARIA
0.22 AC.
1481 S

102

0111
BAKER, LARRY J
& JULIE A
0.321 AC.
1440 W

101

1450 West

1400 West

1375 South

1500 South

1470 West



1 inch = 50 feet

NW 26 2N 1W 06-074	NE 26 2N 1W 06-075
SW 26 2N 1W 06-076	SE 26 2N 1W 06-077
NW 35 2N 1W 06-083	NE 35 2N 1W 06-084

SLB & M

NOTE: Distance, bearings and radius values are approximate. User needs to refer to the recorded legal descriptions for exact bearing and distances. For cadastral or technical information, see the dedicated plat and/or legal descriptions in recorded documents.

