

LORING/SECOR CONDOMINIUMS

PART OF LOTS 7 & 8, SKYPARK INDUSTRIAL PARK
 A PART OF THE NORTHWEST QUARTER OF SECTION 35, TOWNSHIP 2 NORTH,
 RANGE 1 WEST, SALT LAKE BASE & MERIDIAN, U.S. SURVEY
 WOODS CROSS CITY, DAVIS COUNTY, UTAH

PREFIX
 06-214

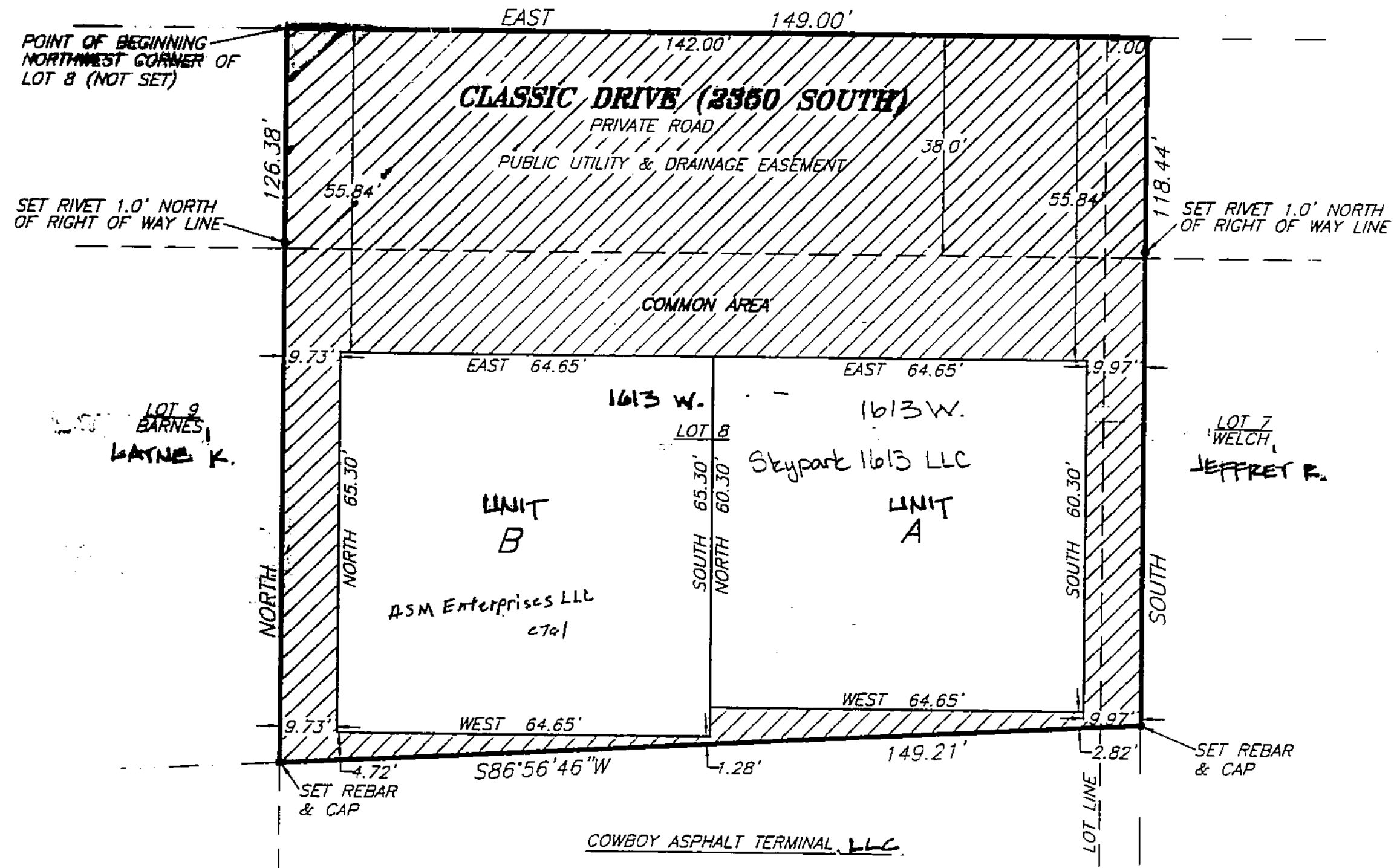
LAST #
 0003

N



SCALE:
 1" = 20'

SKYPARK INDUSTRIAL PARK



COMMON AREA

DEVELOPMENT: LORING/SECOR CONDOMINIUMS

CITY: WOODS CROSS UNITS: A, B & COMMON AREA

NW 1/4 SEC. 35, T.2N, R. 1W.

S.L.M. DAVIS COUNTY, UTAH

FILE # 3699
 R 06-25-02

06-214