

WOODS CROSSING COMMERCIAL PARK AMENDED B

AMENDING LOT 6 OF WOODS CROSSING COMMERCIAL PARK AMENDED
 LOCATED IN THE N.E. 1/4 OF SECTION 25, T2N, R1W SLB&M,
 WOODS CROSS CITY, DAVIS COUNTY, UTAH

PREFIX
 06-210
 8
 LAST #

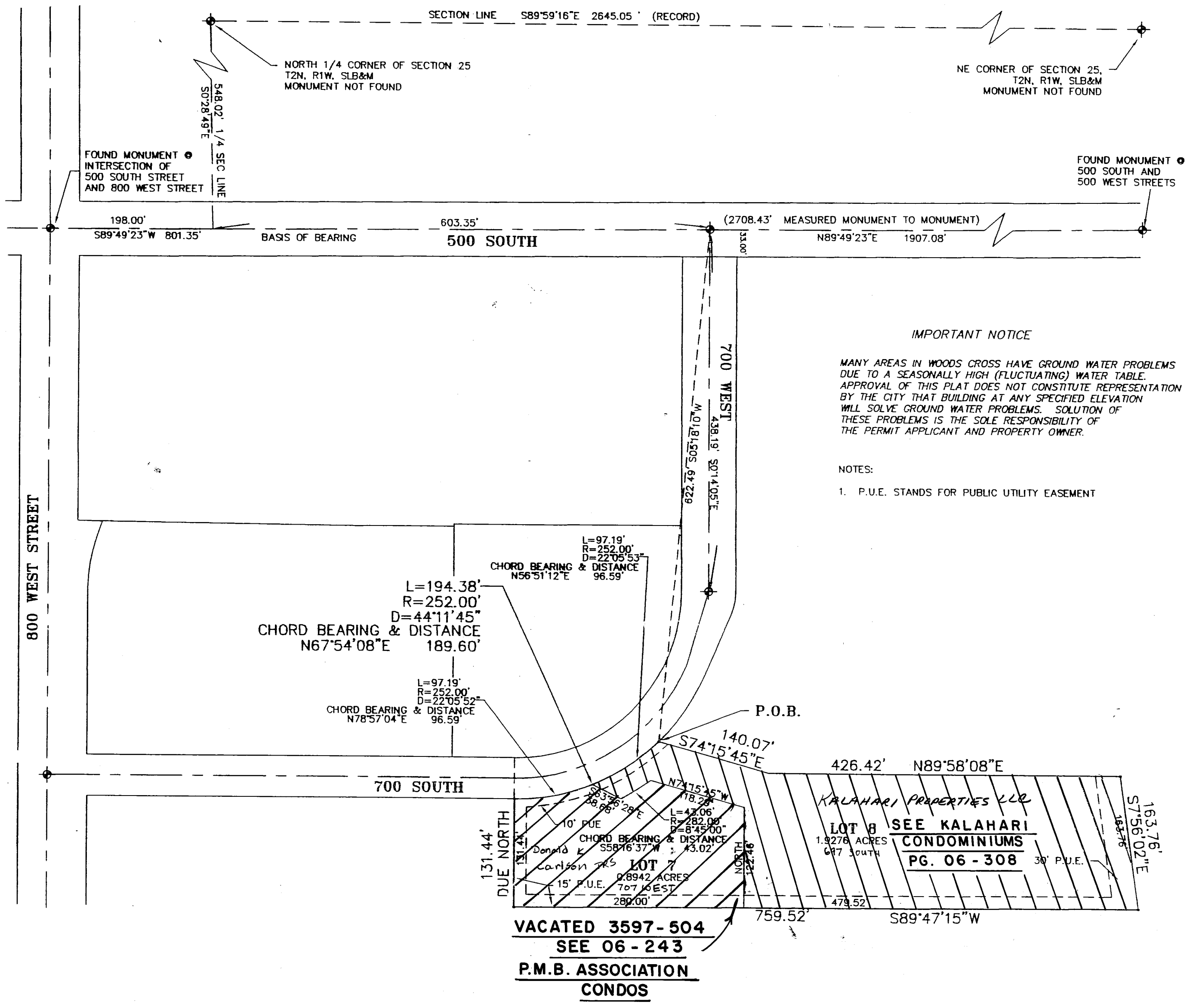


SCALE:
 1" = 100'

DEVELOPMENT: WOODS CROSSING COMMERCIAL PARK AMENDED B
 CITY: WOODS CROSS LOTS: 7 & 8

NE 1/4 SEC. 25, T.2N, R. 1W
 S.L.M. DAVIS COUNTY, UTAH

FILE # 3653
 R 03-08-02



Hill & Argyle Inc.
 Engineering and Surveying
 181 North 200 West Suite #4, Bountiful, Utah 84010 (801)298-2236