

202  
06

# RCW SKYPARK LOTS A RESUBDIVISION

OF  
LOTS 57, 58, 59 AND NORTH HALF OF LOT 60  
ALL WITHIN

SKYPARK INDUSTRIAL PARK

WOODS CROSS, UTAH DAVIS COUNTY

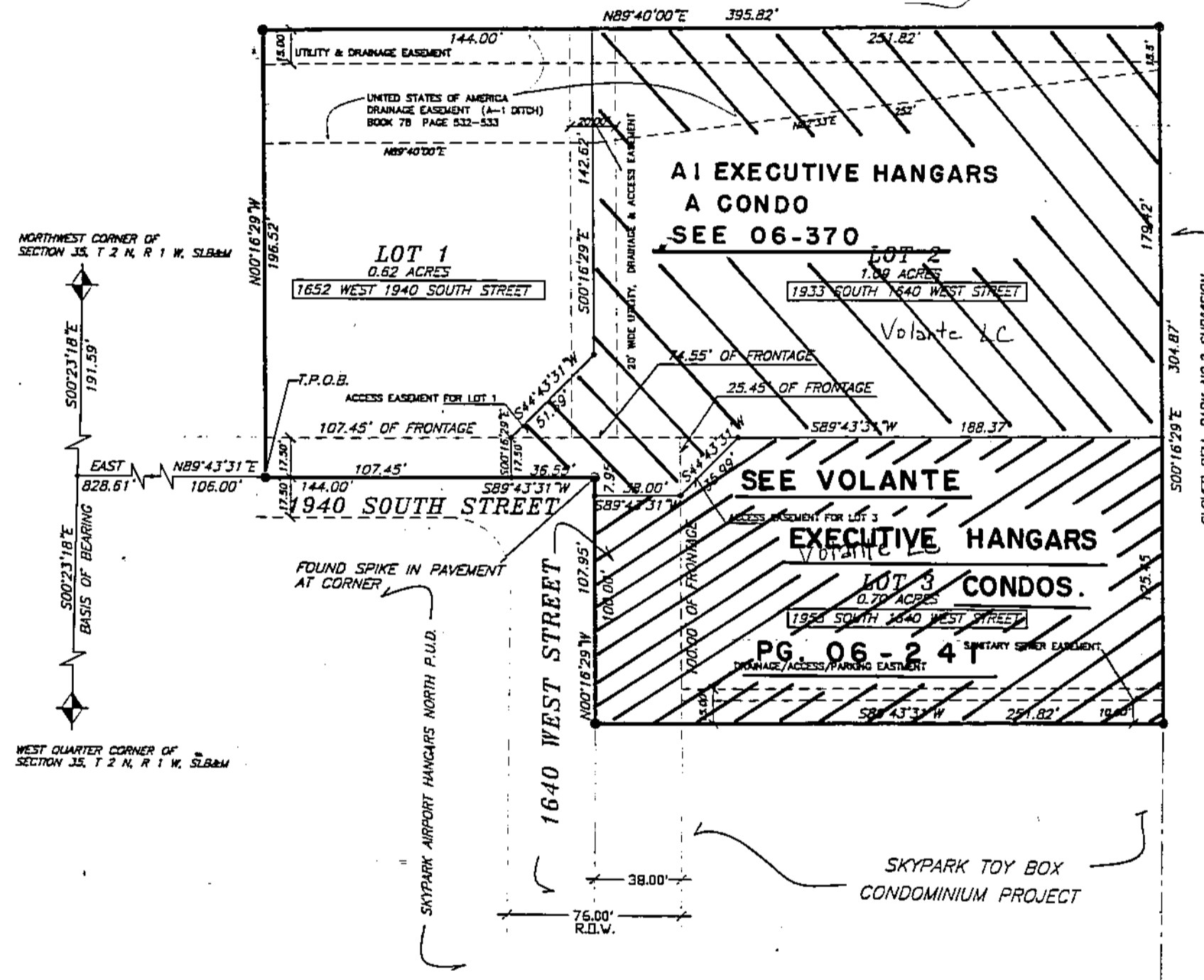
A PART OF THE

NORTHWEST QUARTER OF SECTION 35,

TOWNSHIP 2 NORTH, RANGE 1 WEST,

SALT LAKE BASE AND MERIDIAN

R. Charles Ward + Karma H. Ward owns all Lots not marked



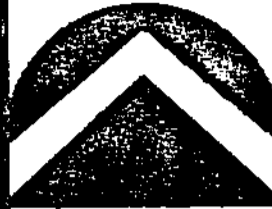
### LEGEND

- RESUBDIVISION BOUNDARY CORNER
- RESUBDIVISION BOUNDARY LINE
- RESUBDIVISION LOT LINE
- SKYPARK INDUSTRIAL PARK LOT LINE
- EASEMENT LINE

*Doyle Pergande*  
DOYLE PERGANDE  
LICENSE No. 154246

PREFIX  
06-202  
LAST #

N



SCALE:  
1" = 60'

DEVELOPMENT: RCW SKYPARK LOTS

CITY: WOODS CROSS LOTS: 1, 2, & 3

LOTS 57 THRU 60 SKYPARK IND. PARK  
NW 1/4 SEC. 35, T.2N, R.1W  
S.L.M. DAVIS COUNTY, UTAH

FILE # 3561  
R 8-08-01