

# GATEWAY PARK PLANNED UNIT DEVELOPMENT

A PART OF THE NORTHEAST QUARTER OF SECTION 25,  
TOWNSHIP 2 NORTH, RANGE 1 WEST, SLB&M  
BOUNTIFUL CITY AND WOODS CROSS CITY, DAVIS COUNTY, UTAH

PREFIX  
06-200

LAST #  
0008



SCALE:  
1" = 60'

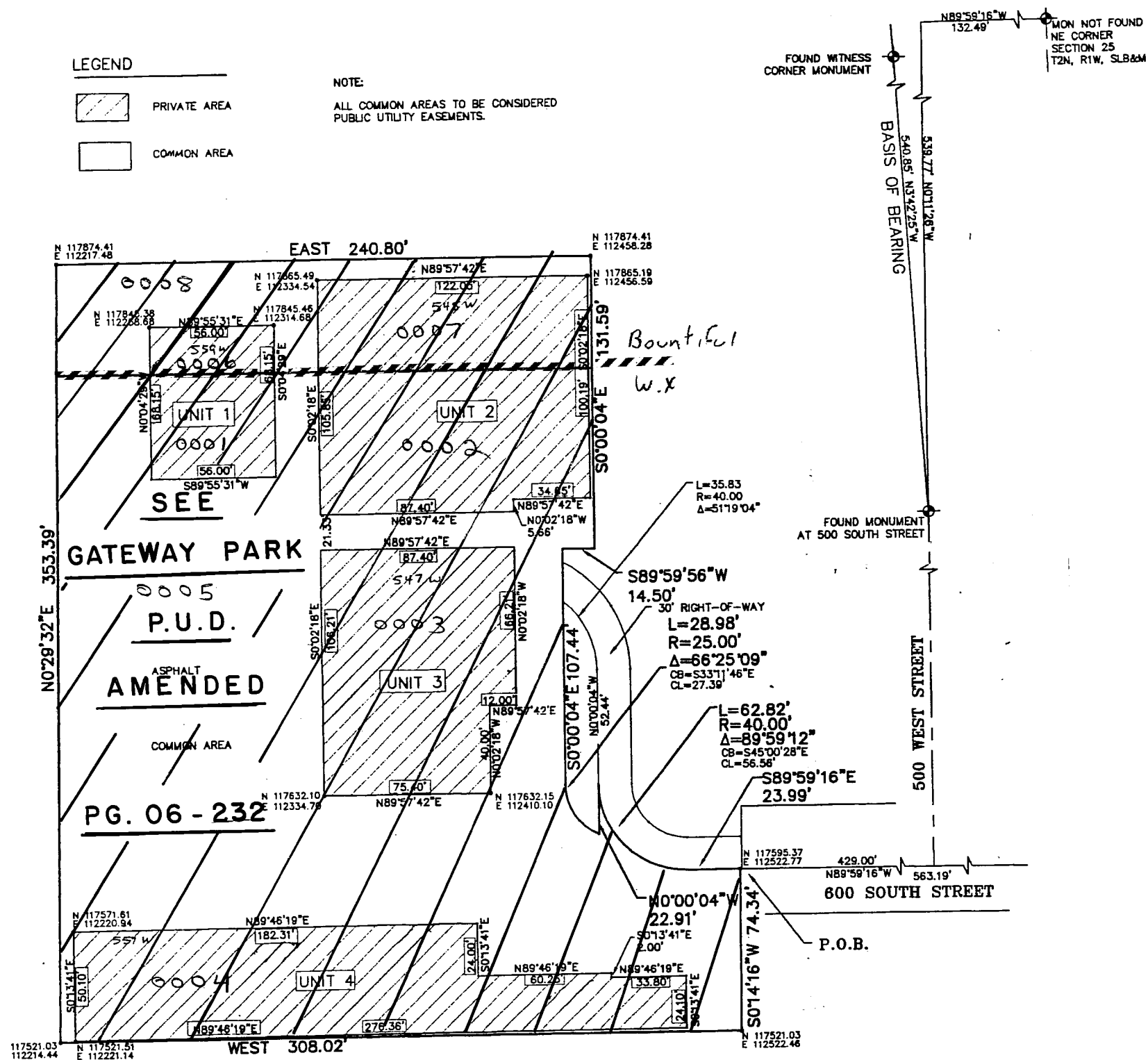
DEVELOPMENT: GATEWAY PARK P.U.D.  
CITY: BOUNTIFUL  
WOODS CROSS  
UNITS: 1 THRU 4 & COMMON

**LEGEND**

- PRIVATE AREA
- COMMON AREA

**NOTE:**

ALL COMMON AREAS TO BE CONSIDERED PUBLIC UTILITY EASEMENTS.



UNIT	OWNER	PID
1 (So)	Ariara Investments LLC	0001
2 (So)	Tom V. Hollander - etal	0002
3	H.A.J. Properties LLC	0003
4	Tom V. Hollander - etal	0004
	Common Area	0005
1 (No)	Ariara Investments LLC	0006
2 (No)	Tom V. Hollander - etal	0007
	Common Area	0008

**LEGEND**

- PRIVATE AREA
- COMMON AREA

**NOTE:**

ALL COMMON AREAS TO BE CONSIDERED PUBLIC UTILITY EASEMENTS.

**H A HILL & ARGYLE, Inc.**  
Engineering and Surveying  
181 North 200 West, Suite #4, Bountiful, Utah 84010  
(801) 298-2236 Phone, (801) 298-5983 Fax

NE 1/4 SEC. 25, T.2N, R. 1W  
S.L.M. DAVIS COUNTY, UTAH

FILE # 3533  
R 06-22-01

06 200