

LIFE LINES INDUSTRIAL PARK

LIGHT INDUSTRIAL PARK

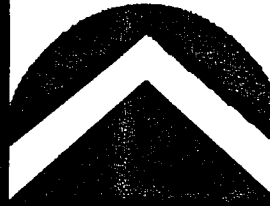
Sinclair Oil Corporation
owns all Lots Not Marked

A PORTION OF THE SOUTHWEST QUARTER OF SECTION 36, TOWNSHIP 2 NORTH, RANGE 1 WEST,
SALT LAKE BASE AND MERIDIAN, DAVIS COUNTY, UTAH
WOODS CROSS

PREFIX 3
06-199

LAST #

N



SCALE:
1" = 100'

DEVELOPMENT: LIFE LINES INDUSTRIAL PARK

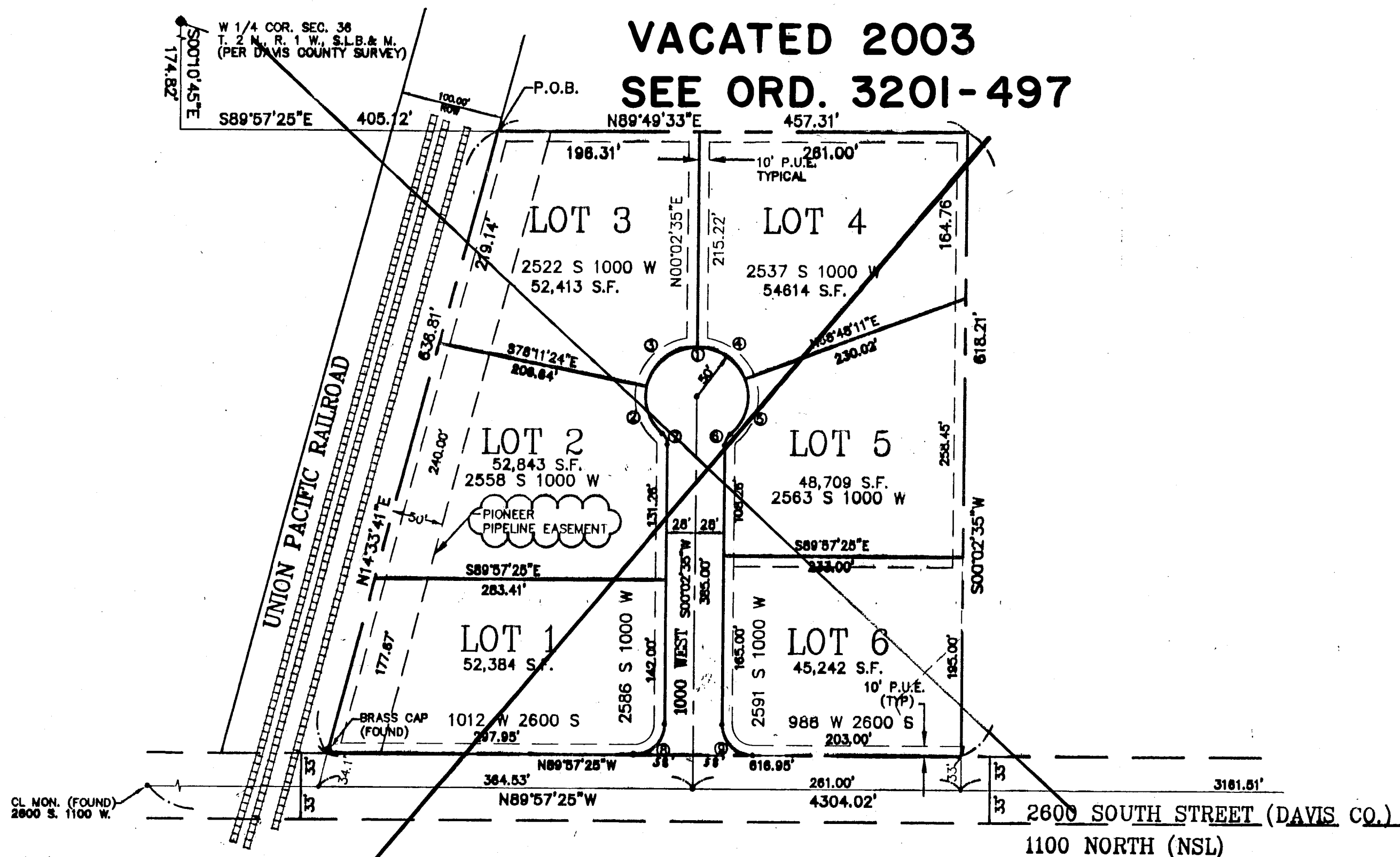
CITY: WOODS CROSS LOTS: 1 THRU 6

SW 1/4 SEC. 36, T.2N, R. 1W

S.L.M. DAVIS COUNTY, UTAH

R 4-23-01

VACATED 2003
SEE ORD. 3201-497



CURVE DATA TABLE

CURVE	RADIUS	LENGTH	TANGENT	CHORD	BEARING	DELTA
1	50.00'	241.87'	44.11'	66.15'	S89°57'25"E	277°09'55"
2	50.00'	52.67'	29.07'	50.26'	N18°21'53"W	60°20'59"
3	50.00'	68.27'	40.66'	63.09'	N50°55'36"E	78°13'59"
4	50.00'	60.00'	34.21'	56.47'	S55°34'37"E	68°45'36"
5	50.00'	60.93'	34.90'	57.23'	N13°42'52"E	69°49'22"
6	15.00'	12.72'	6.77'	12.34'	S24°20'04"W	48°34'58"
7	15.00'	12.72'	6.77'	12.34'	N24°14'54"W	48°34'58"
8	30.00'	47.12'	30.00'	42.43'	S45°02'35"W	90°00'00"
9	30.00'	47.12'	30.00'	42.43'	S44°57'25"E	90°00'00"

SURVEY NOTES:

ALL REAR LOT CORNERS AND PROPERTY CORNERS MARKED WITH 5/8" REBAR & CAP; LS#161081

ALL FRONT CORNERS & PROPERTY CORNERS MARKED WITH SAME REBAR & CAP AND/OR A PERMANENT MARKER IN THE CURB & GUTTER AT THEIR EXTENSION

LOT RESTRICTIONS TO APPLY TO INDIVIDUAL LOT OWNERS

1. EACH LOT WILL BE REQUIRED TO PROVIDE STORM DRAIN DETENTION UPON DEVELOPMENT.
2. ALL LOTS WILL REQUIRE SITE PLAN APPROVAL FROM WOODS CROSS CITY PRIOR TO CONSTRUCTION.
3. LOTS 2 & 3 WILL REQUIRE FILL MATERIAL IN ORDER TO PROVIDE POSITIVE DRAINAGE TO 1000 WEST.

Byrd & Associates LLC
Engineers & Land Surveyors

1610 South Main, Suite H
Bountiful, Utah 84010
Phone (801)-292-0400
Fax (801)-292-8216

06 199