

# BEATTIE SUBDIVISION

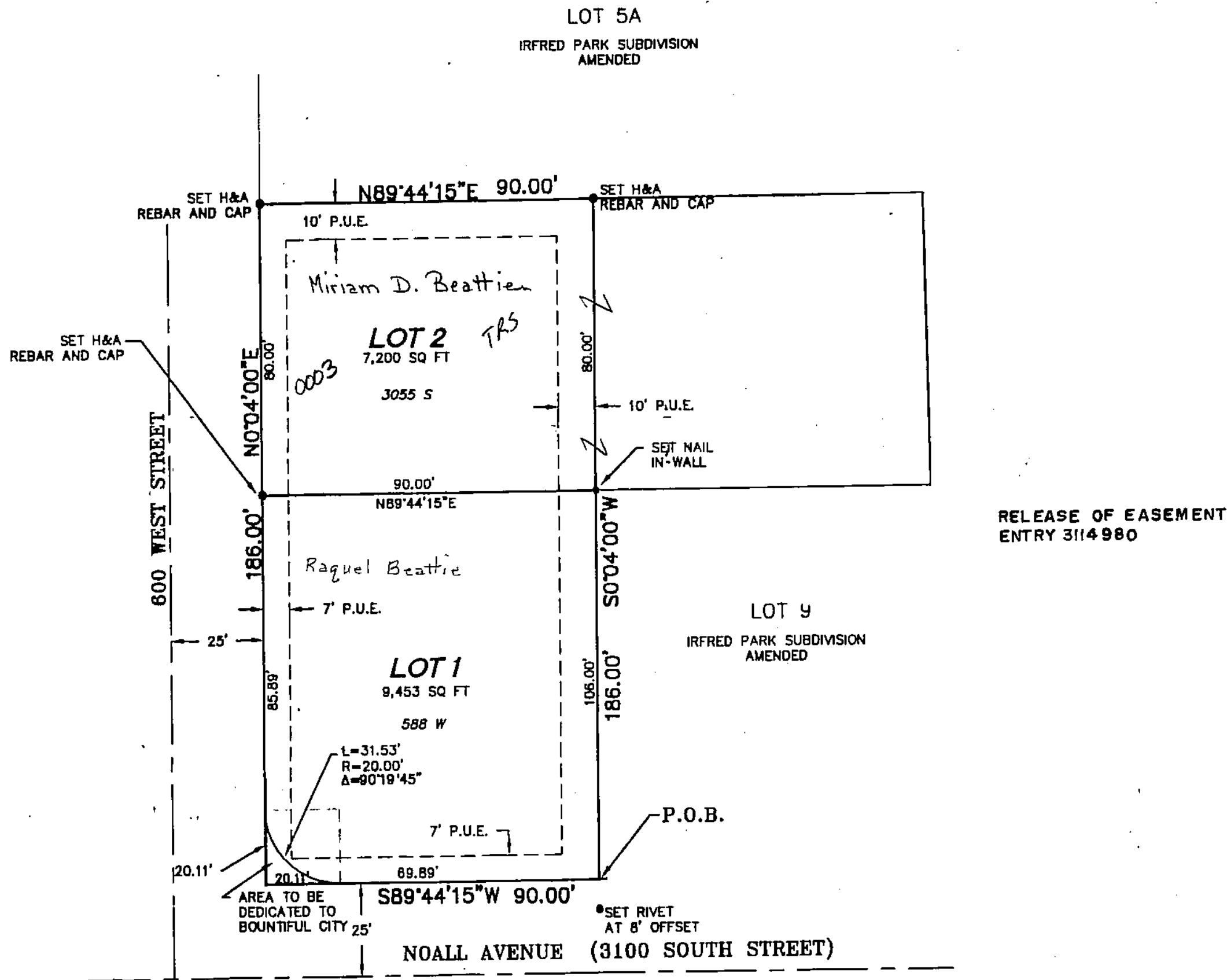
LOCATED IN THE NORTHEAST QUARTER OF SECTION 1, T1N, R1W, SLB&M  
 A SUBDIVISION OF ALL OF LOT 8, BLOCK 4, IRFRED PARK SUBDIVISION, AMENDED PLAT  
 BOUNTIFUL CITY, DAVIS COUNTY, UTAH

PREFIX 18  
 06-197

LAST #  
 0003



SCALE:  
 1" = 30'



DEVELOPMENT: BEATTIE SUBDIVISION

CITY: BOUNTIFUL LOTS: 1 & 2

LOT 8, BLK 4, IRFRED PARK AMD  
 NE 1/4 SEC. 01, T.1N, R. 1W  
 S.L.M. DAVIS COUNTY, UTAH  
 R 4-04-01

06 197

**H HILL & ARGYLE, Inc.**  
 Engineering and Surveying  
 181 North 200 West, Suite #4, Bountiful, Utah 84010  
 (801) 298-2236 Phone, (801) 298-5983 Fax  
 PROJECT 00-344 R 2/13/01