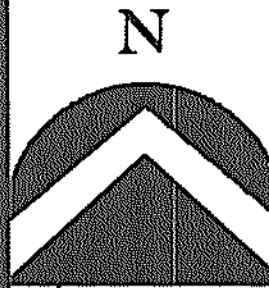


MARTIN PLACE SUBDIVISION
 BEING A PART OF THE SOUTHWEST QUARTER OF SECTION 25, T. 2 N., R. 1 W., S.L.B.M.
 WOODS CROSS CITY, DAVIS COUNTY, UTAH

PREFIX 16
 06-187

LAST #
 0006



SCALE:
 1" = 40'

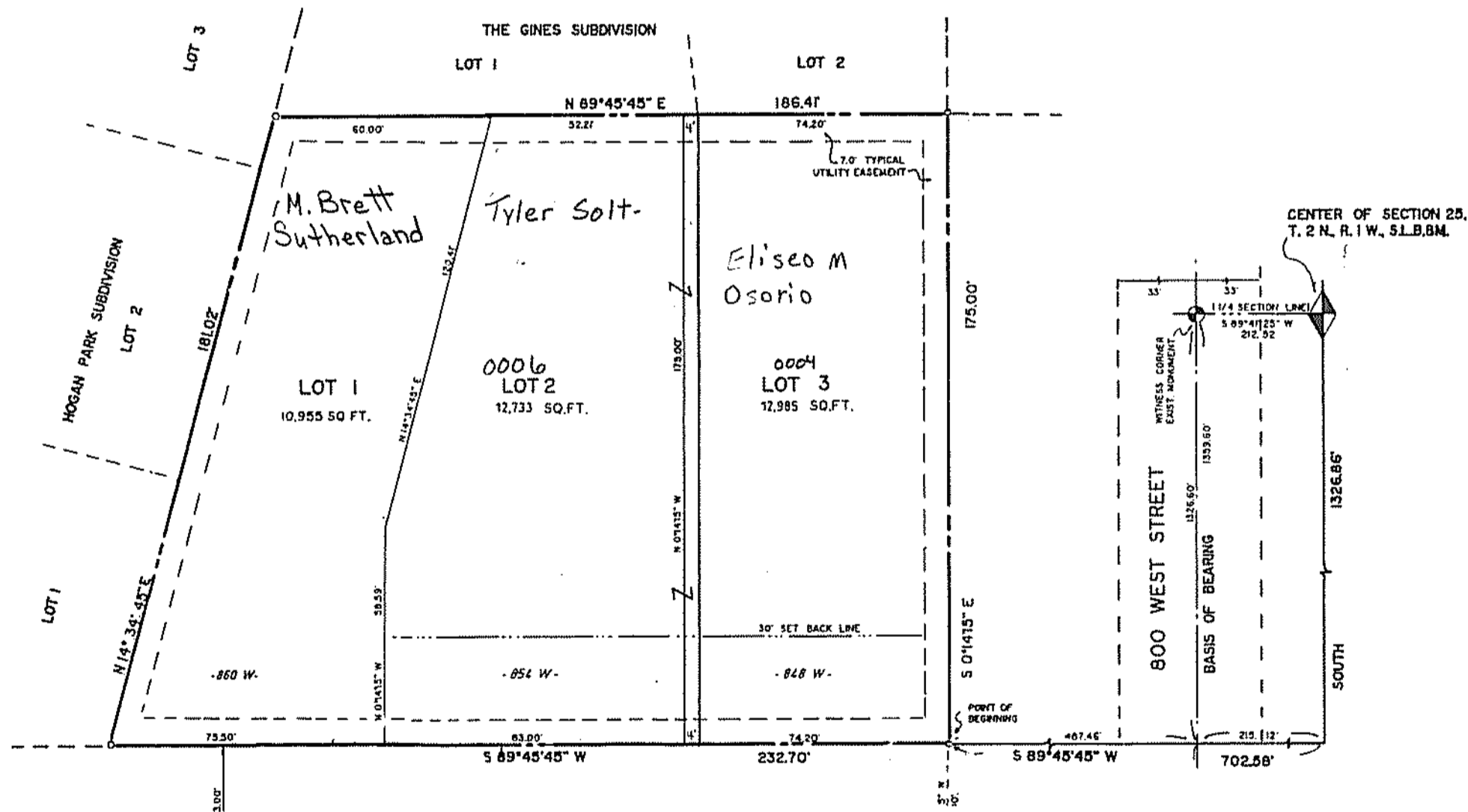
DEVELOPMENT: MARTIN PLACE SUBDIVISION

CITY: WOODS CROSS LOTS: 1 THRU 3

SW 1/4 SECTION 25, T. 2N, R. 1W

S.L.M. DAVIS COUNTY, UTAH

R 04-18-00



187

06