

SKYPARK K AND T INC., SUBDIVISION

AMENDING LOTS 38 AND 13, SKYPARK INDUSTRIAL PARK

LOCATED IN THE NORTH-WEST QUARTER OF
SECTION 35, TOWNSHIP 2 NORTH, RANGE 1 WEST
SALT LAKE BASE & MERIDIAN
WOODS CROSS CITY, DAVIS COUNTY, UTAH

PREFIX
06-185

LAST #
DD01

N



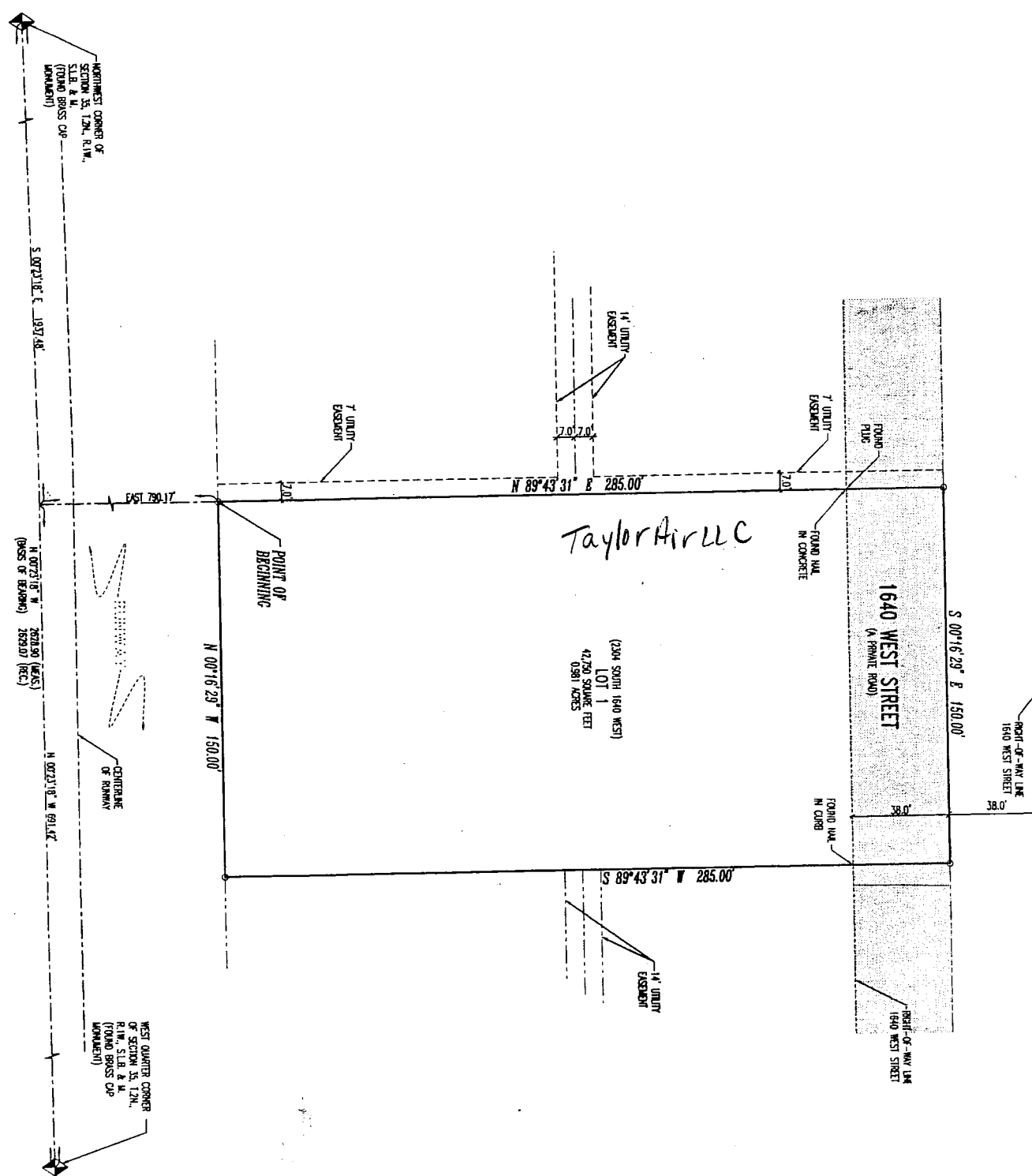
SCALE:
1" = 60'

DEVELOPMENT: SKYPARK K AND T INC., SUBDIVISION








CITY: WOODS CROSS LOT: 1

NW 1/4 SECTION 35, T. 2N, R. 1W
LOTS 13 & 38 SKYPARK IND. PARK
S.L.M. DAVIS COUNTY, UTAH

R 02-25-00



LEGEND

-  SECTION CORNER MONUMENT
-  BOUNDARY LINE
-  ADJOINING PROPERTY LINE
-  EASEMENT LINE
-  RIGHT-OF-WAY LINE
-  SET A 1/2 INCH BAR, TWO FEET IN LENGTH, AND RED PLASTIC CAP, OR NAIL AND WASHER STAMPED "MCNEIL ENGR."
-  1640 WEST STREET PRIVATE ROADWAY

PREPARED BY:
MCNEIL ENGINEERING, INC.
CONSULTING ENGINEERS
&
LAND SURVEYORS
6895 SOUTH 900 EAST MIDVALE, UTAH 84047
(801) 255-7700

06
185