

HERITAGE QUEST SUBDIVISION

Being All of Lots 16, 17 and 18 of Hughes Industrial Park,
A Subdivision of the Southwest Quarter, Section 35, T2N, R1W, SLB & M
NORTH SALT LAKE CITY, DAVIS COUNTY, UTAH

PREFIX
06-180
LAST #



SCALE:
1" = 60'

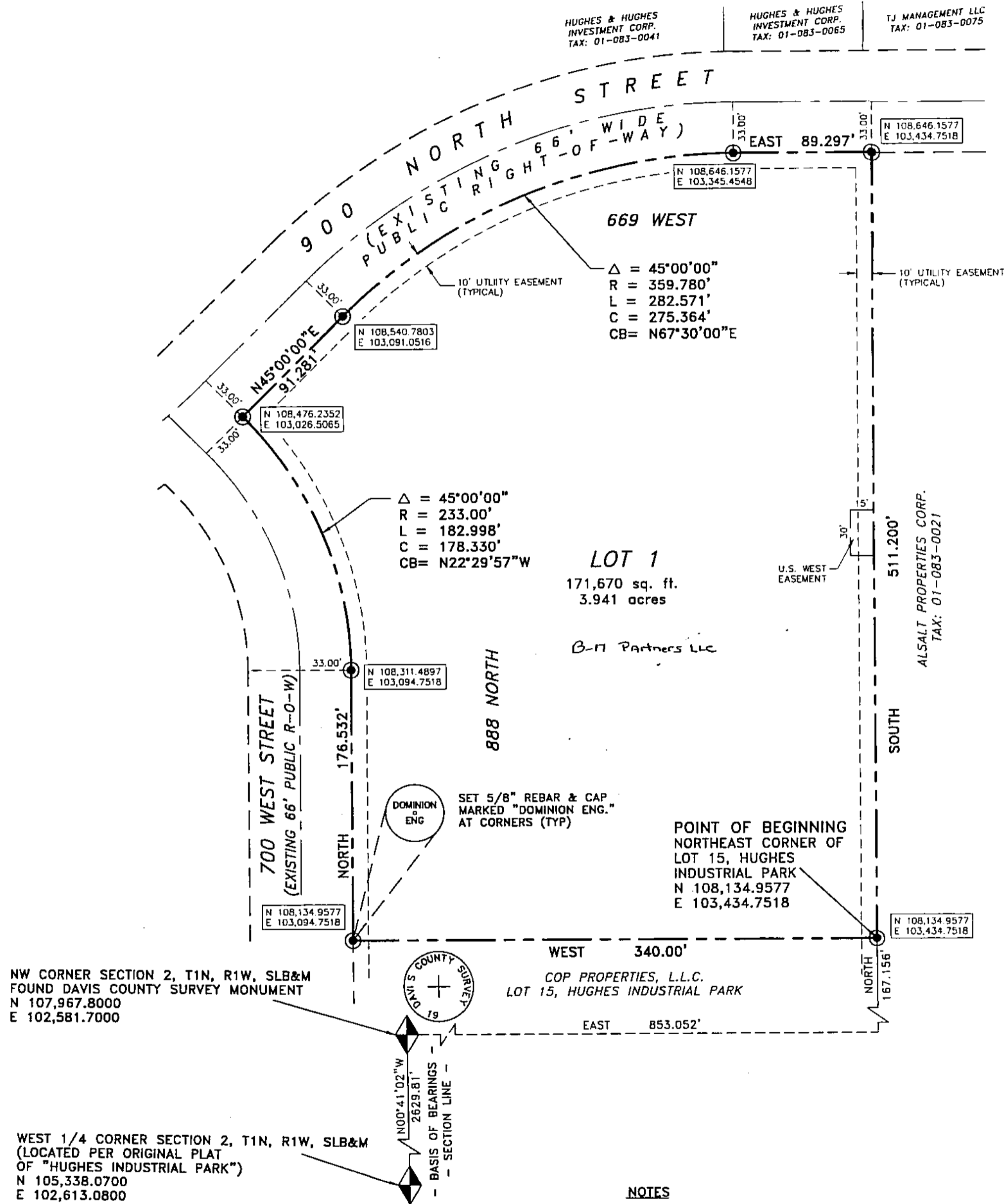
DEVELOPMENT: HERITAGE QUEST SUBDIVISION

CITY: NORTH SALT LAKE LOTS: 1

SW 1/4 SEC. 35, T2N R1W
SALT LAKE MERIDIAN
DAVIS COUNTY, UTAH

R 12-23-99

06 180



Dominion
Engineering Associates, L.C.
699 East South Temple, Suite 220
Salt Lake City, UT 84102 363-6111