

# CLEARWATER ESTATES SUBD

## WEST BOUNTIFUL

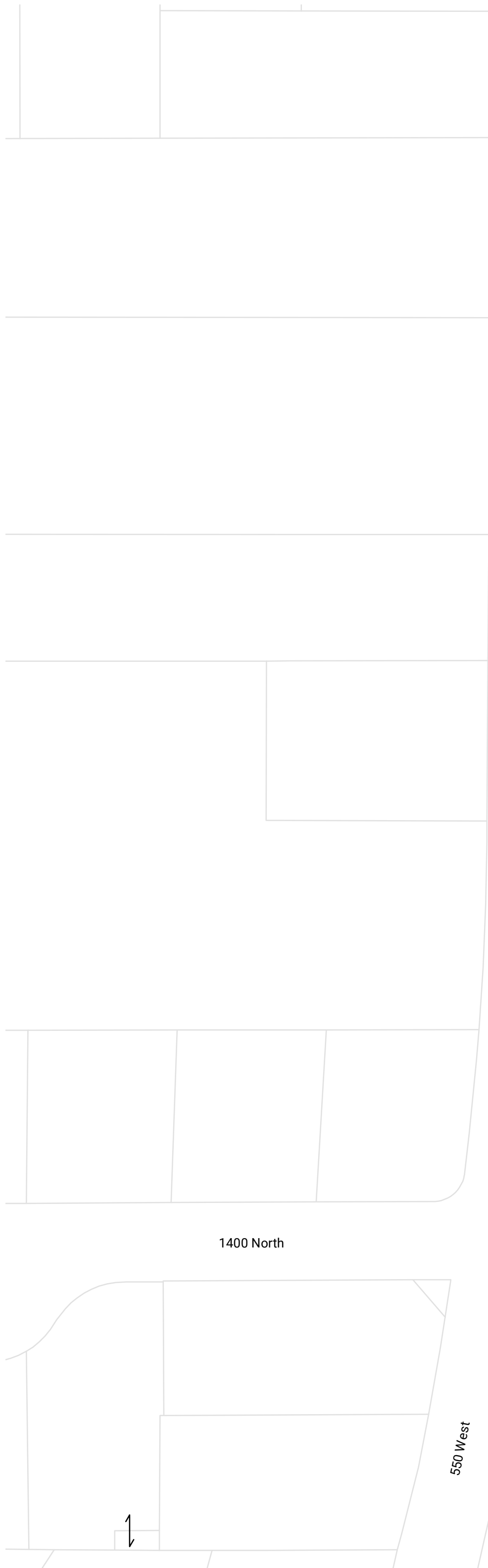
Tax ID Prefix

### 06-157

Plat ID: 2849

Sheet 1 of 1

Year Recorded: 1997



9

0009  
YOUNGBERG,  
TONYA R  
0.234 AC.  
1520 N

8

0008  
FORD, CLINT J  
& KERRILL  
0.462 AC.  
1500 N

7

0007  
MARTINSON,  
ANMARIE  
0.463 AC.  
1480 N

6

0006  
CHRISTENSEN,  
DONALD R &  
LESA M  
0.464 AC.  
1460 N

5

0005  
OCARANZA, MIGUEL  
J AND CASTRO,  
SAMARA M  
0.465 AC.  
1440 N

4

0004  
SYMES, SCOTT  
0.466 AC.  
1420 N

3

0003  
BRANDON,  
ROBERT SHAWN  
0.473 AC.  
1400 N

2

0002  
HUARACA, GERARDO  
& DELIA  
0.481 AC.  
1380 N

1

0001  
YONG, KIMKUN &  
RATHANAK AND  
ROT, LEAV  
0.532 AC.  
1360 N



1 inch = 60 feet

|                         |                         |
|-------------------------|-------------------------|
| NE 13<br>2N 1W<br>06012 | NW 18<br>2N 1E<br>03001 |
| SE 13<br>2N 1W<br>06014 | SW 18<br>2N 1E<br>03003 |
| NE 24<br>2N 1W<br>06037 | NW 19<br>2N 1E<br>03019 |

S L B & M

NOTE: Distance, bearings and radius values are approximate. User needs to refer to the recorded legal descriptions for exact bearing and distances. For cadastral or technical information, see the dedicated plat and or legal descriptions in recorded documents.

175 & 15 & Veterans Memorial Hwy

