

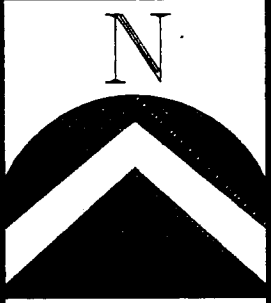
LEXINGTON COMMONS AT SOUTH DAVIS PHASE 1

A PART OF THE SOUTHEAST QUARTER OF SECTION 25,
TOWNSHIP 2 NORTH, RANGE 1 WEST, SALT LAKE BASE AND MERIDIAN
WOODS CROSS CITY, DAVIS COUNTY, UTAH

SDC Woods Cross LLC owns all Units not marked

PREFIX 06-156

LAST #

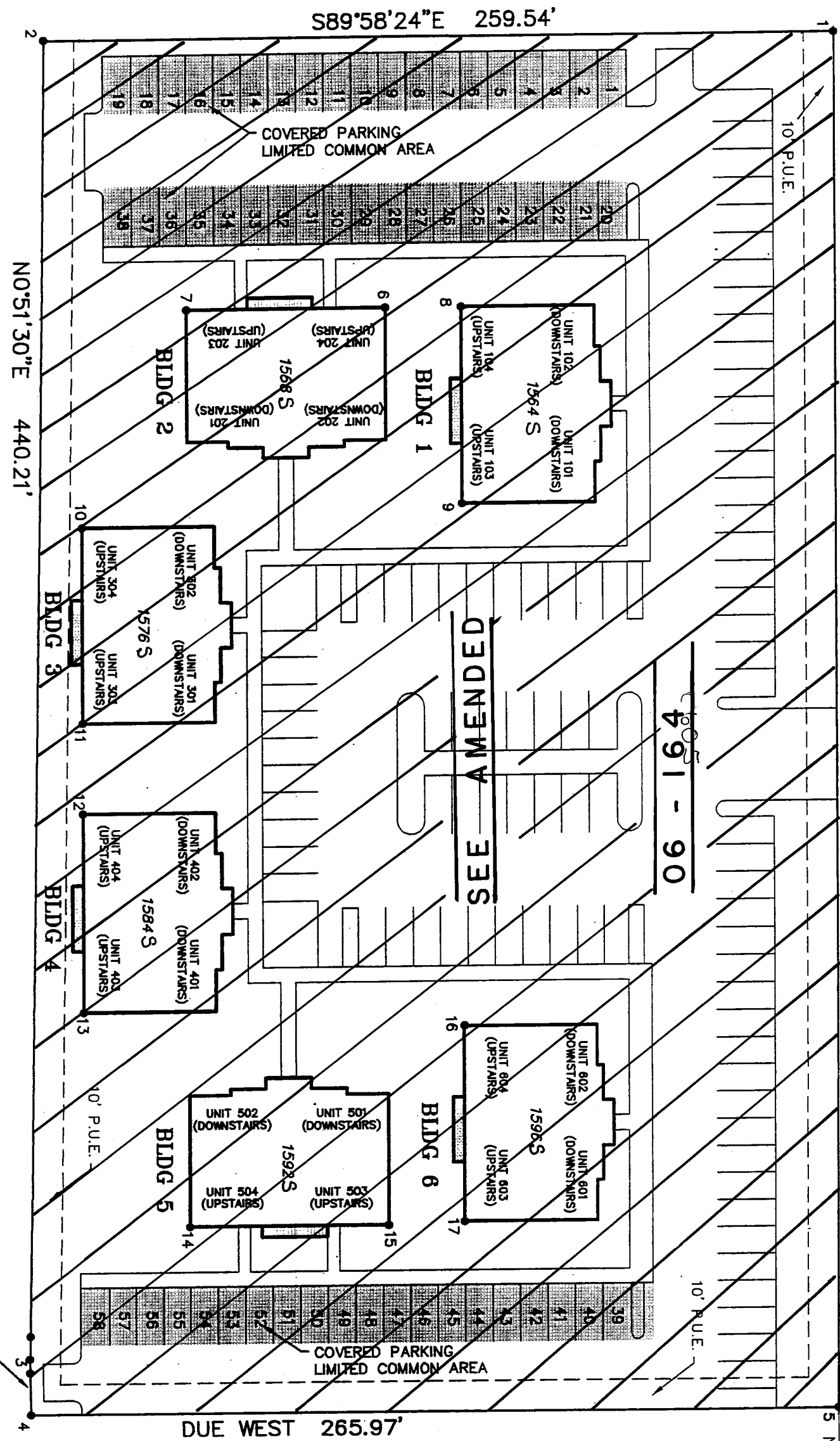


SCALE:
1" = 40'

SUBDIVISION: LEXINGTON COMMONS AT SOUTH DAVIS PHASE 1
 CITY: WOODS CROSS BLDGS: 1-6 UNITS: 101-104, 201-204, 301-304, 401-404, 501-504, 601-604
 AND COMMON AREA

SE 1/4 SECTION 25 T2N R1W
 SALT LAKE MERIDIAN
 DAVIS COUNTY UTAH

R 6*19*97



COVERED PARKING IN LIMITED COMMON AREA IS ASSIGNED AS FOLLOWS

UNIT #	SPACES
101	1, 20
102	2, 21
103	3, 22
104	4, 23
201	5, 24
202	6, 25
203	7, 26
204	8, 27
301	9, 28
302	10, 29
303	11, 30
304	12, 31
401	13, 55
402	32, 56
403	14, 57
404	33, 58
501	49, 53
502	47, 51
503	48, 52
504	50, 54
601	39, 43
602	40, 44
603	41, 45
604	42, 46

UNASSIGNED
15
16
17
18
19
34
35
36
37
38

COORDINATE TABLE

POINT	NORTHING	EASTING
1	114458.75	112910.83
2	114458.87	112651.29
3	114018.71	112644.70
4	114004.82	112644.68
5	114004.82	112762.82
6	114370.15	112762.82
7	114370.15	112697.82
8	114370.12	112787.82
9	114305.12	112787.82
10	114298.48	112662.96
11	114233.48	112662.96
12	114203.48	112662.96
13	114138.48	112662.96
14	114066.90	112697.82
15	114066.90	112762.82
16	114132.85	112787.82
17	114067.85	112787.82

BUILDING #1
UNIT 101
UNIT 102
UNIT 103
UNIT 104

BUILDING #2
UNIT 201
UNIT 202
UNIT 203
UNIT 204

BUILDING #3
UNIT 301
UNIT 302
UNIT 303
UNIT 304

BUILDING #4
UNIT 401
UNIT 402
UNIT 403
UNIT 404

BUILDING #5
UNIT 501
UNIT 502
UNIT 503
UNIT 504

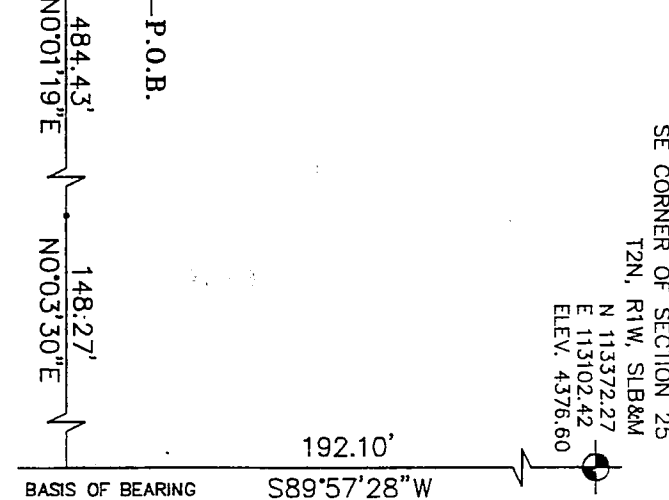
BUILDING #6
UNIT 601
UNIT 602
UNIT 603
UNIT 604
UNIT 605 Homeowners Assn.

IMPORTANT NOTICE

MANY AREAS OF WOODS CROSS HAVE GROUND WATER PROBLEMS DUE TO SEASONALLY HIGH (FLUCTUATING) WATER TABLE. APPROVAL OF THIS PLAT DOES NOT CONSTITUTE REPRESENTATION BY THE CITY THAT BUILDING AT ANY SPECIFIED ELEVATION WILL SOLVE RESPONSIBILITY OF THE PERMIT APPLICANT AND PROPERTY OWNER.

NOTES:

ALL AREAS OUTSIDE OF BUILDINGS ARE COMMON
ALL COMMON AREAS ARE RESERVED BY AN EASEMENT TO PROTECT ALL OPEN SPACE FROM FUTURE BUILDING DEVELOPMENT.



06/56