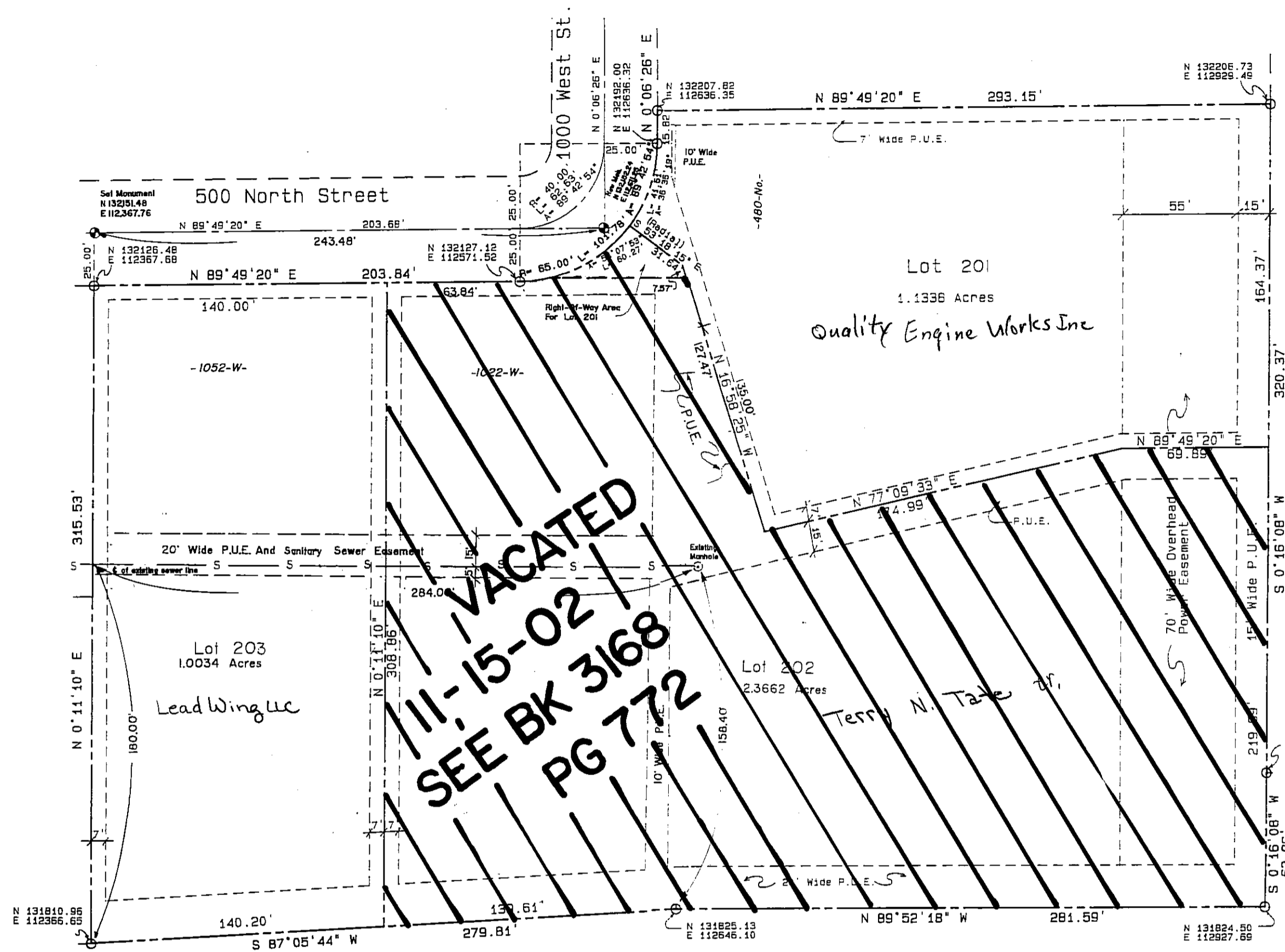


Sport Sales Plaza Phase 2 Subdivision

Being A Part Of The East Half Of Section 12, T.2 N., R.1 W., S.L.B.& M.
Centerville City, Davis County, Utah

PREFIX Z
06-154
LAST #
N
SCALE:
1" = 50'



Notes:

1. All easements are 7.0 ft. wide public utility easements (P.U.E.) unless noted otherwise.
2. All coordinates are based on Davis County Surveyor's office datum.
3. Approval of this development plat by Centerville City does not constitute any representation as to the adequacy of subsurface soil conditions nor the location or depth of ground water tables.
4. All property corners are marked with a 1/2 inch steel rebar and yellow surveyor's cap.

Narrative

PURPOSE OF SURVEY:
To subdivide property for owner.
BASIS OF ESTABLISHMENT:
Our instrument was set over the brass monument at the East Quarter Corner of Section 12 and the Section Corner to the North was sited as a basis of bearing. From this point all corners were radially located.
FOUND MONUMENTS:
Existing brass monuments were found at the East Quarter Corner and the Northeast Corner of Section 12, as shown.

Ballinger
Engineering

SUBDIVISION: SPORT SALES PLAZA PHASE 2
CITY: CENTERVILLE LOTS: 201-203

E 1/2 SECTION 12 T2N R1W
SALT LAKE MERIDIAN
DAVIS COUNTY UTAH

R 3*4*97

154

06