

151

06

SKYPARK INDUSTRIAL PARK AMENDED

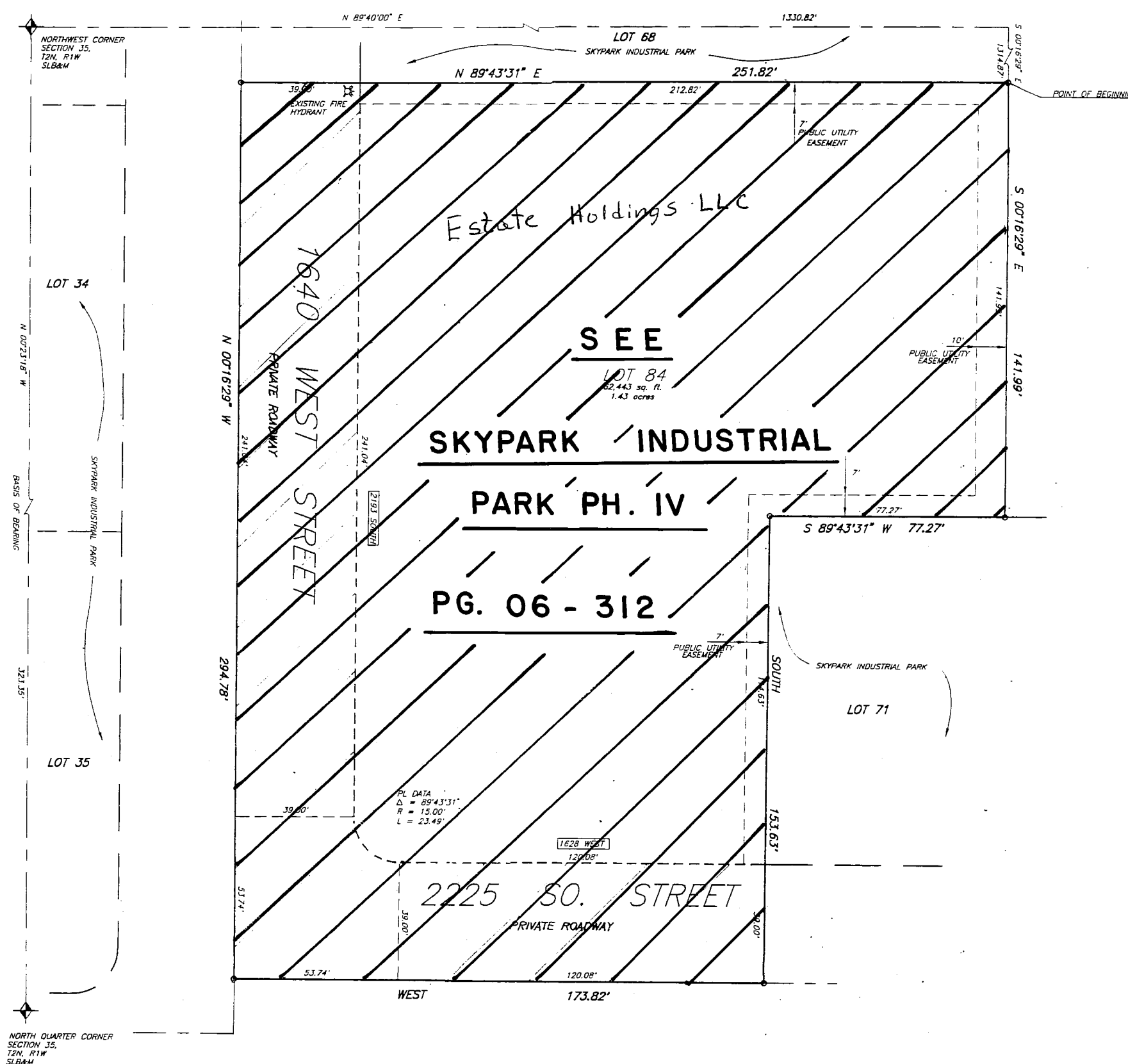
ALL OF LOTS 69, 70 OF THE SKYPARK INDUSTRIAL PARK
LOCATED IN THE NORTH WEST CORNER SECTION 35
TOWNSHIP 2 NORTH, RANGE 1 WEST
SALT LAKE BASE AND MERIDIAN
WOODS CROSS CITY, DAVIS COUNTY, UTAH

PREFIX
06-151

LAST #
9



SCALE:
1" = 40'



NOTE:
 1) THE OWNER WILL BE RESPONSIBLE FOR IMPROVING THE ADJOINING STREETS WITH CURB AND GUTTER AND SIDEWALK AND DRAINAGE FACILITIES.
 2) LOT 69 & 70 OF SKYPARK INDUSTRIAL PARK ARE COMBINED TO BE LOT 84 AMENDED SKYPARK INDUSTRIAL PARK AND IS SHOWN ON THIS PLAT.
 3) RIGHTS-OF-WAY FOR INGRESS AND EGRESS AND PUBLIC UTILITY EASEMENT EXIST WITH THE PRIVATE ROADWAY 1640 WEST STREET AND 2225 SOUTH STREET AS DEFINED HEREIN.

SUBDIVISION: SKYPARK INDUSTRIAL PARK AMD.

CITY: WOODS CROSS LOT: 84

LOTS 69 & 70 SKYPARK IND. PARK

NW SECTION 35 T 2N R 1W
SALT LAKE MERIDIAN
DAVIS COUNTY UTAH



4455 South 700 East, Suite 201
Salt Lake City, Utah 84107 (801) 263-2455
fax (801)-263-2742