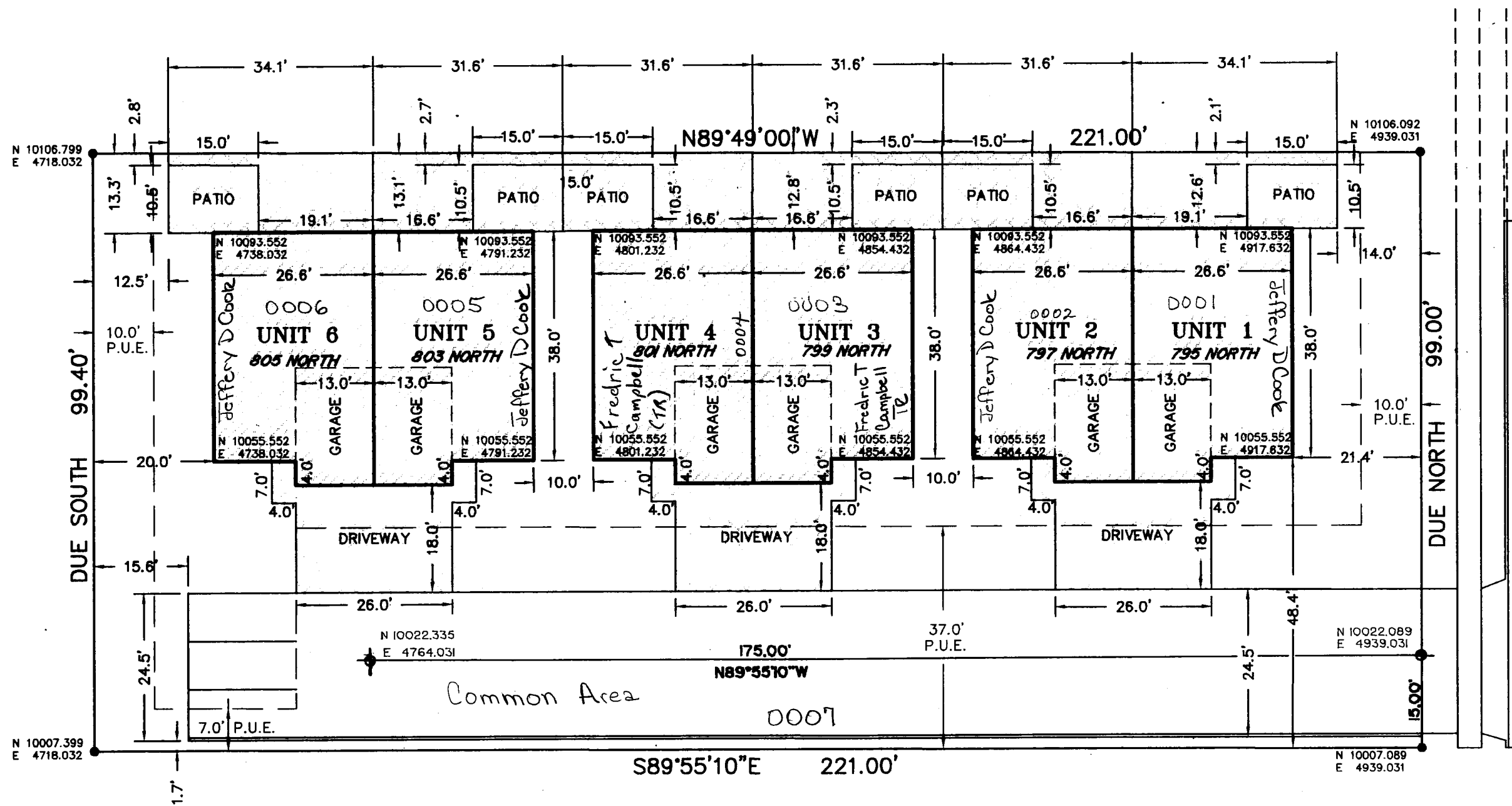


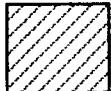



APPLEWOOD TOWNHOMES PLANNED UNIT DEVELOPMENT

BEING PART OF THE SOUTHWEST QUARTER OF SECTION 36,
TOWNSHIP 2 NORTH, RANGE 1 WEST, SALT LAKE BASE AND MERIDIAN
NORTH SALT LAKE CITY, DAVIS COUNTY, UTAH

Allen + Cook Investments LLC
Owns all Units not marked



LEGEND

- PRIVATE OWNERSHIP AREA 
- LIMITED COMMON AREA 
- COMMON AREA 
-  MONUMENT TO BE SET

GENERAL NOTES:

1. APPROVAL OF THIS PLANNED UNIT DEVELOPMENT PLAT BY NORTH SALT LAKE CITY DOES NOT CONSTITUTE ANY REPRESENTATION AS TO THE ADEQUACY OF SUBSURFACE SOIL CONDITIONS OVER THE LOCATION OR DEPTH OF GROUND WATER TABLE.
2. COORDINATES ARE NOT DAVIS COUNTY SURVEY COORDINATES.

147

06

PREFIX
06-147
LAST #

NORTH

SCALE
1" = 20'

SUBDIVISION APPLEWOOD TOWNHOMES P.U.D.
CITY NORTH SALT LAKE LOTS 1 TO 6
DAVIS COUNTY GEO-GRAPHIC INFORMATION DIVISION & COMMON

SW1/4 SECTION 36 T2N R1W
Salt Lake Meridian
Davis County, Utah