

KERR SUBDIVISION

A SUBDIVISION LOCATED IN THE SE QUARTER OF SECTION 13, T2N, R1W, SLB&M
WEST BOUNTIFUL CITY, DAVIS COUNTY, UTAH

M-Y Enterprises Inc. owns all Lots
not marked

EAST 1/4 CORNER SECTION 13,
T2N, R1W, SLB&M

N 126598.420
E 113052.360

1478.31'
S0°20'53"E

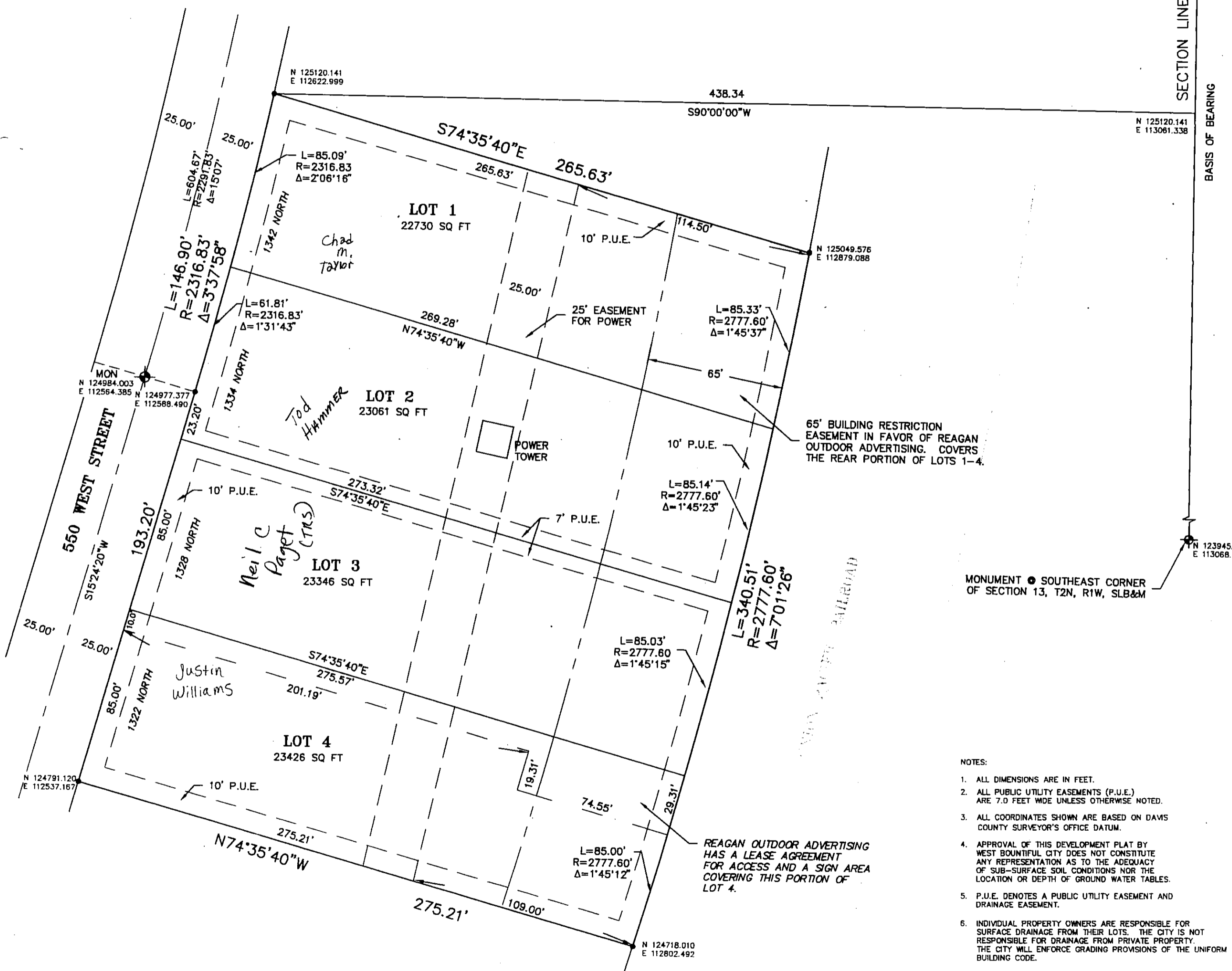
SECTION LINE

BASIS OF BEARING

N 125120.141
E 113061.338

N 123945.47
E 113068.47

MONUMENT • SOUTHEAST CORNER
OF SECTION 13, T2N, R1W, SLB&M



NOTES:

- ALL DIMENSIONS ARE IN FEET.
- ALL PUBLIC UTILITY EASEMENTS (P.U.E.) ARE 7.0 FEET WIDE UNLESS OTHERWISE NOTED.
- ALL COORDINATES SHOWN ARE BASED ON DAVIS COUNTY SURVEYOR'S OFFICE DATUM.
- APPROVAL OF THIS DEVELOPMENT PLAT BY WEST BOUNTIFUL CITY DOES NOT CONSTITUTE ANY REPRESENTATION AS TO THE ADEQUACY OF SUB-SURFACE SOIL CONDITIONS NOR THE LOCATION OR DEPTH OF GROUND WATER TABLES.
- P.U.E. DENOTES A PUBLIC UTILITY EASEMENT AND DRAINAGE EASEMENT.
- INDIVIDUAL PROPERTY OWNERS ARE RESPONSIBLE FOR SURFACE DRAINAGE FROM THEIR LOTS. THE CITY IS NOT RESPONSIBLE FOR DRAINAGE FROM PRIVATE PROPERTY. THE CITY WILL ENFORCE GRADING PROVISIONS OF THE UNIFORM BUILDING CODE.

BUILDING RESTRICTIONS

WEST BOUNTIFUL CITY ORDINANCE 4-9-17,
PARAGRAPH D REQUIRES:

*ALL FINISH FLOOR ELEVATIONS ON BUILDINGS CONSTRUCTED SHALL BE AT LEAST 12 INCHES ABOVE THE CURB, OR STREET, OR PROPOSED STREET LEVEL ADJACENT TO THE BUILDING EXCEPT WHERE OTHERWISE APPROVED BY THE CITY ENGINEER AND THE CITY COUNCIL.

PRELIM

06-146

LAST #

NORTH

SCALE

1" = 40'

LOTS 1 TO 4

SUBDIVISION **KERR**
CITY **WEST BOUNTIFUL** LOTS 1 TO 4
DAVIS COUNTY GEO-GRAPHIC INFORMATION DIVISION

SE 1/4 SECTION 13, T2N, R1W
Salt Lake Meridian
Davis County, Utah

R 8-27-96

146

06