

# VAL VERDA CONDO DAVIS COUNTY

2800 South

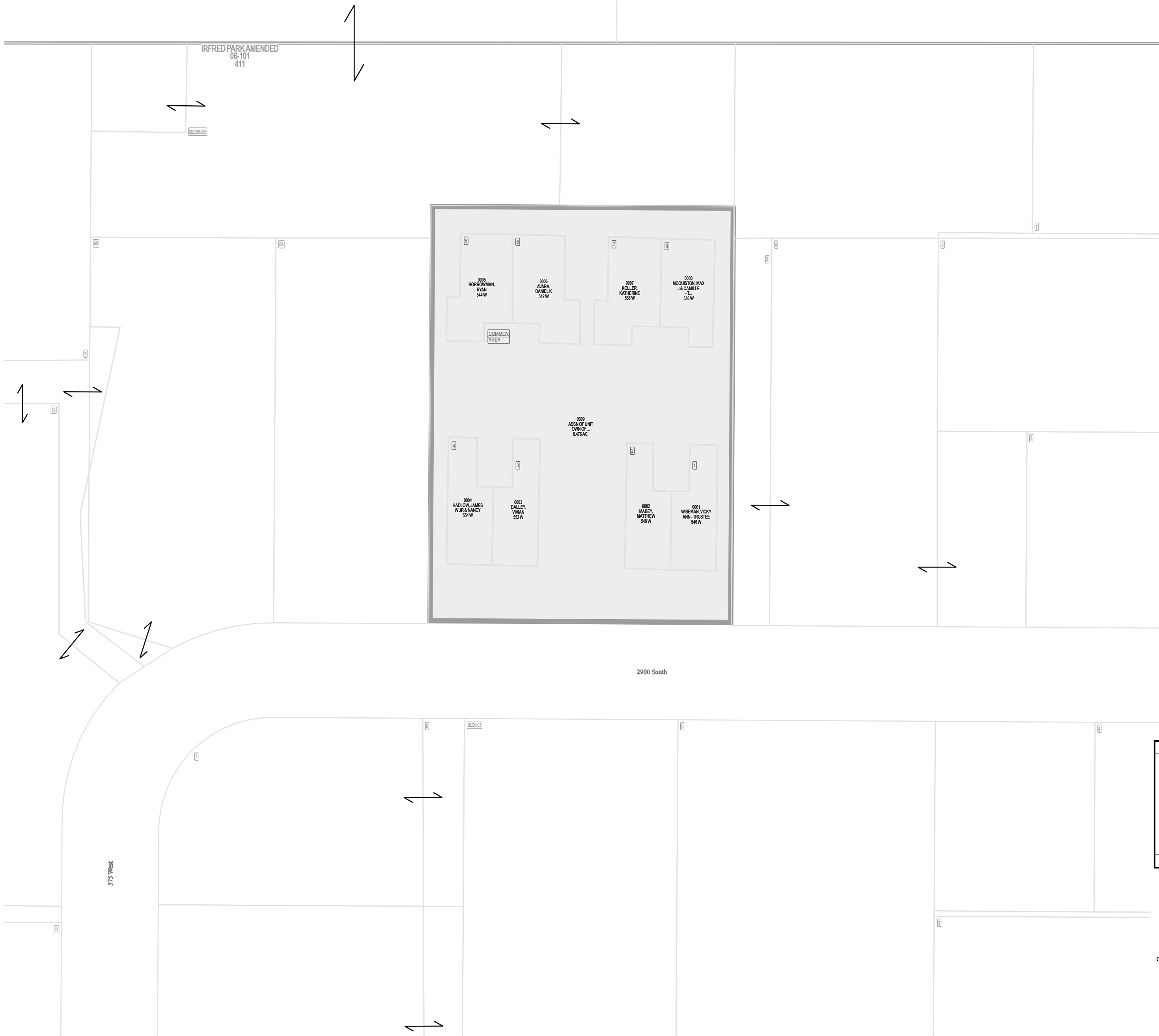
Tax ID Prefix

**06-120**

Plat ID: 1722

Sheet 1 of 1

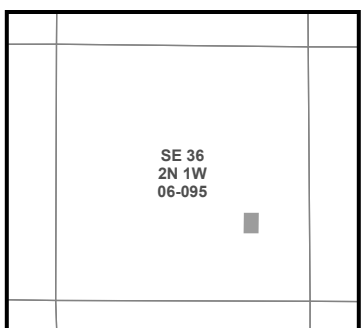
Year Recorded: 1986



**Parcel ID**

Lot Number

1 inch = 40 feet



S L B & M

NOTE: Distance, bearings and radius values are approximate. User needs to refer to the recorded legal descriptions for exact bearing and distances. For cadastral or technical information, see the dedicated plat and or legal descriptions in recorded documents.

