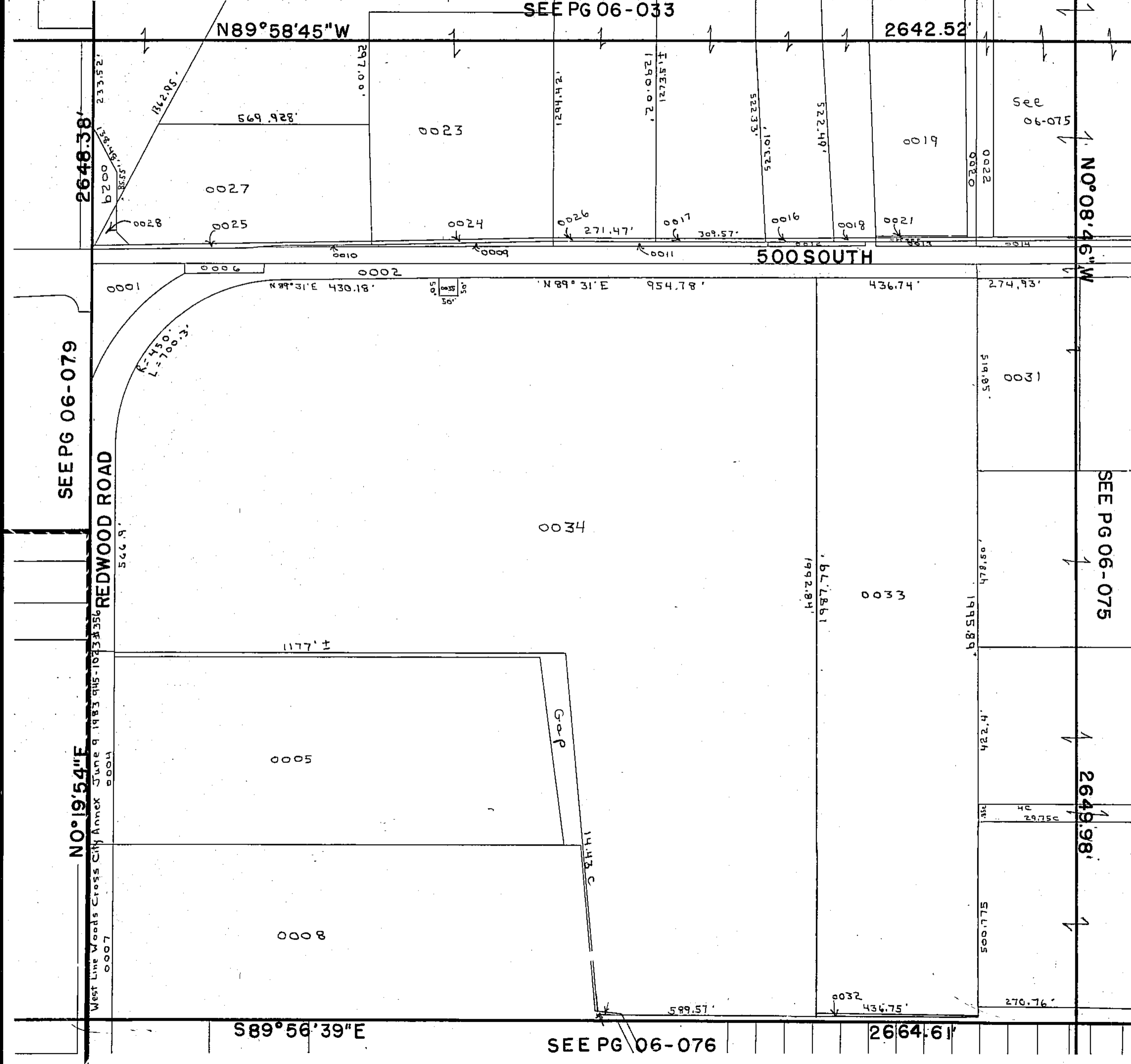


06 074

PID	OWNER	ACRES	PID	OWNER	ACRES	PID	OWNER	ACRES	PID	OWNER	ACRES
0001	State Road Commission	.81	0016	Utah Dept. of Transportation	.042	0029	Wood Cross City	.32			
0002	State Road Commission	3.98	0017	Utah Dept. of Transportation	.07	0031	Kirk, Craig L + Peggy	3.30			
0004	State Road Commission	.66	0018	Utah Dept. of Transportation	.026	0032	Mountain Gold, Inc	.030			
0005	Coalt Inc	14.06	0019	Marjorie Hansen Kingsbury-TR	2.92	0033	Mountain Gold, Inc	19.970			
0006	State Road Commission of Utah	.23	0020	Utah Dept. of Transportation	.417	0034	World Enterprises Inc World Enterprises II	55.395			
0007	State Road Commission of Utah	.58	0021	Utah Dept. of Transportation	.022	0035	Quistar Gas Company	.06			
0008	Coalt Inc	14.00	0022	Utah Dept. of Transportation	.672						
0009	State Road Commission of Utah	.07	0023	General Electric Capital Auctions, Inc	7.039						
0010	State Road Commission of Utah	.03	0024	Utah Dept. of Transportation	.111						
0011	State Road Commission of Utah	.11	0025	Utah Dept. of Transportation	.189						
0012	State Road Commission of Utah	.06	0026	Utah Dept. of Transportation	.061						
0013	State Road Commission of Utah	.07	0027	General Electric Capital Auctions Inc	5.181						
0014	State Road Commission of Utah	.24	0028	Wood's Cross City	.09						



PREFIX 16
06-074
LAST #



SCALE:
1" = 200'

NW 1/4 SECTION 26, T 2N R 1W, SALT LAKE MERIDIAN
DAVIS COUNTY, UTAH—RECORDER'S OFFICE