

SECTION 23 TP 2 N R 1 W

Salt Lake Meridian

SCALE 50 FEET = ONE INCH

PREFIX 06-035

14

TELFORD SUBDIVISION

LOTS 1 THRU 6

Last # 12

035

06

1839.85' N 89°59'38"E  
N 1/4 COR.  
SEC. 23 T2N R1W

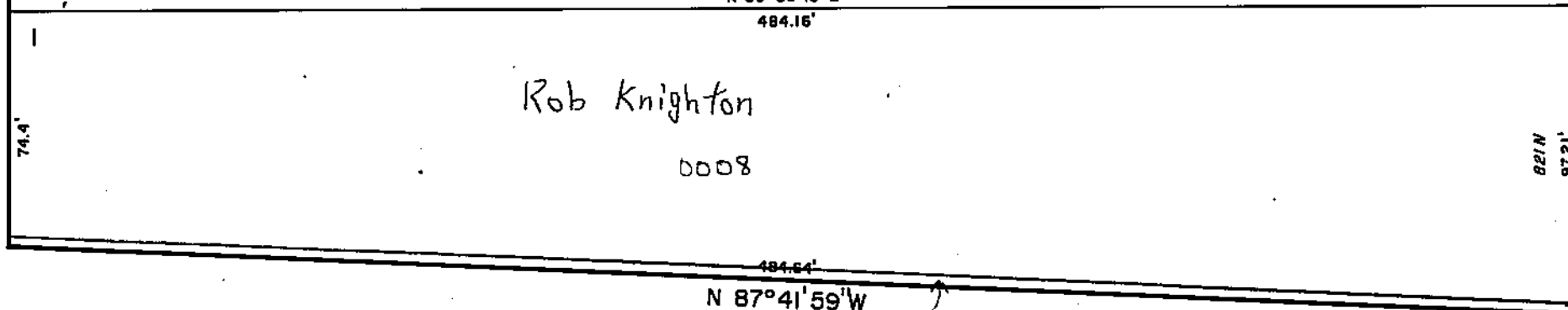
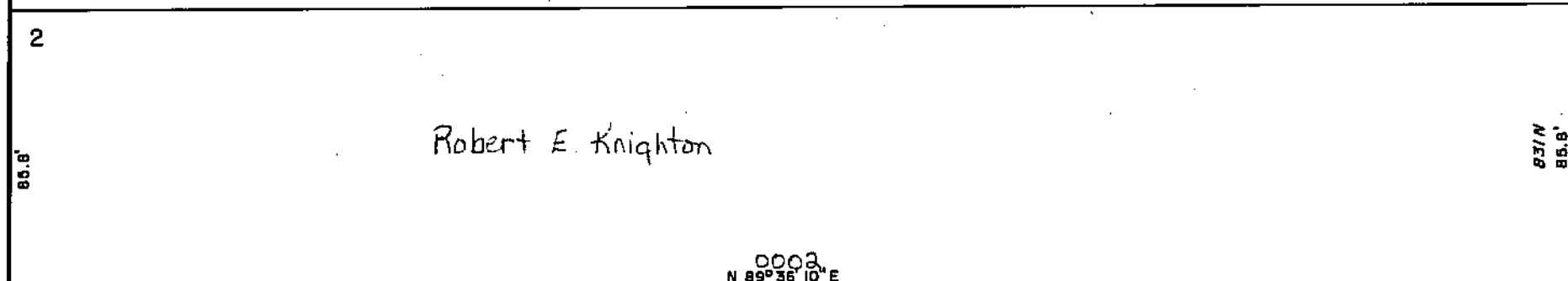
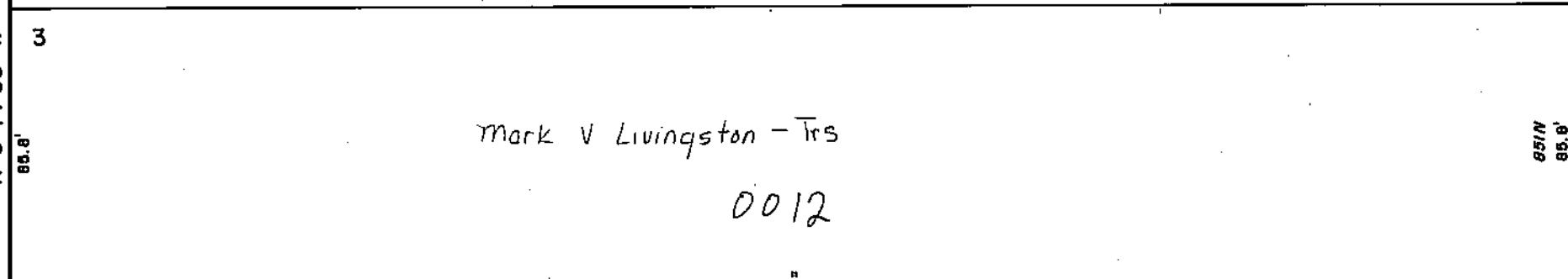
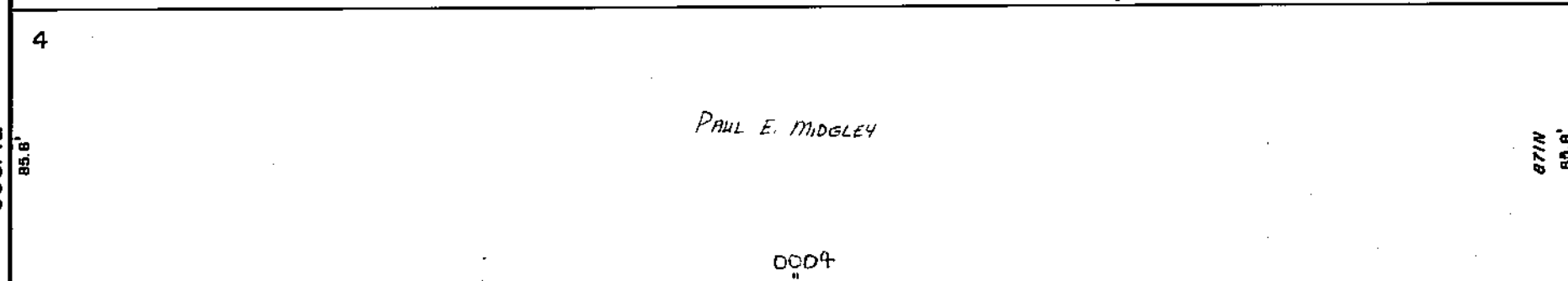
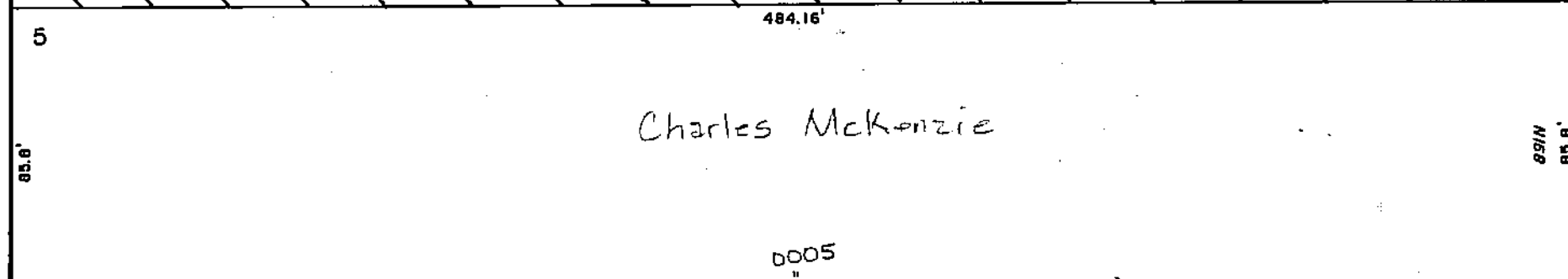
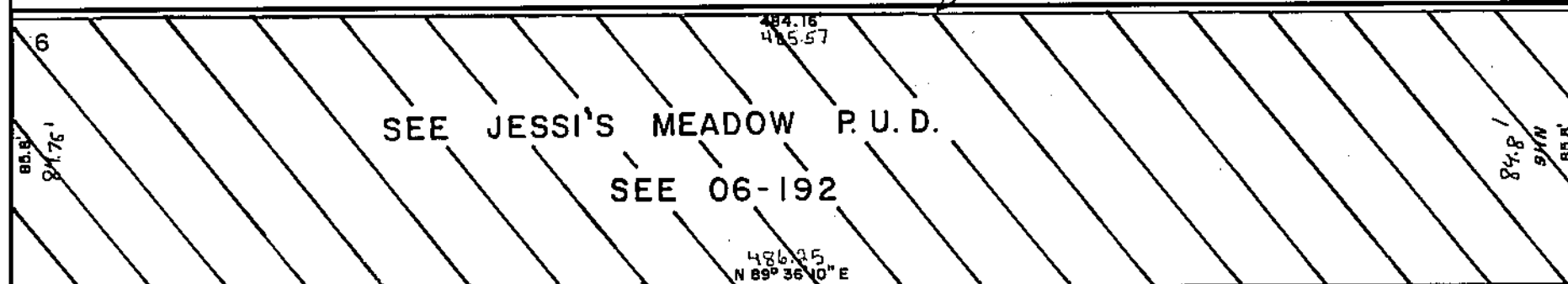
SOUTH 412.7'

NE 23, 24th W

TFC INC. OWNS ALL LOTS NOT MARKED

N 89°36'10"E

SEE 06-032



N 87°41'59"W

0009 - Davis County

WEST 1100 WEST

