

03 280

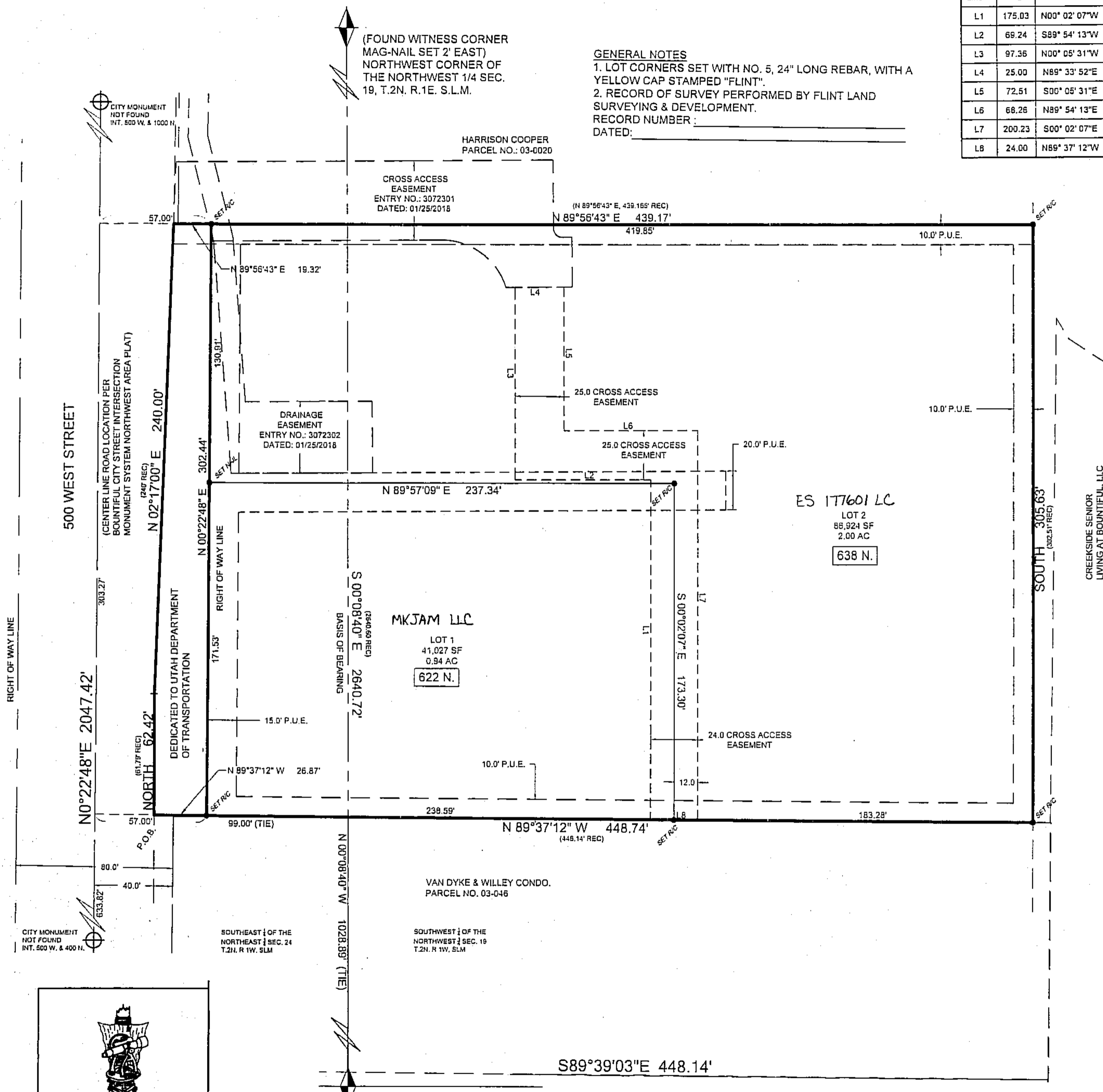
CULVERS COMMERCIAL SUBDIVISION

SITUATE IN THE N.W. 1/4 OF SECTION 19, T. 2 N., R. 1 E. & THE N.E. 1/4 OF SECTION 24, T. 2 N. R. 1 W. SALT LAKE BASE AND MERIDIAN, BOUNTIFUL CITY, DAVIS COUNTY, STATE OF UTAH.
Bountiful NMC Block 8

Line Table		
Line #	Length	Direction
L1	175.03	N00° 02' 07"W
L2	69.24	S89° 54' 13"W
L3	97.36	N00° 05' 31"W
L4	25.00	N89° 33' 52"E
L5	72.51	S00° 05' 31"E
L6	66.26	N89° 54' 13"E
L7	200.23	S00° 02' 07"E
L8	24.00	N89° 37' 12"W

GENERAL NOTES

1. LOT CORNERS SET WITH NO. 5, 24" LONG REBAR, WITH A YELLOW CAP STAMPED "FLINT".
 2. RECORD OF SURVEY PERFORMED BY FLINT LAND SURVEYING & DEVELOPMENT.
- RECORD NUMBER: _____
DATED: _____



FLINT
SURVEYING & DEVELOPMENT
11471 S. 2700 W.
SOUTH JORDAN, UT 84095
PHONE: (801) 446-1820
WWW.FLINTUTAH.COM

PREFIX
03-280
LAST #
0002



SCALE:
1" = 40'

DEVELOPMENT: CULVERS COMMERCIAL SUBDIVISION
CITY: BOUNTIFUL LOTS: 1 & 2

NW 1/4 OF SEC. 19, T. 2N, R. 1E
NE 1/4 OF SEC. 24M T. 2N R. 1W
S.L.M. DAVIS COUNTY, UTAH
BOUNTIFUL NMC BLOCK 8

FILE #5944
R-08-03-18