

RENAISSANCE TOWNE CENTRE COMMERCIAL PUD PHASE 1 PLAT 3

BOUNTIFUL

Tax ID Prefix

03-279

Plat ID: 5923

Sheet 1 of 1

Year Recorded: 2018

1500 South

1. 0011 RENAISSANCE TOWNE CENTRE MASTER ASSOCIATION INC 0.128 AC.

COMMON AREA

0009
RENAISSANCE
PLACE LLC
0.29 AC.
1508 S

0010
TOWN CENTER LLC
0.53 AC.
1520 S

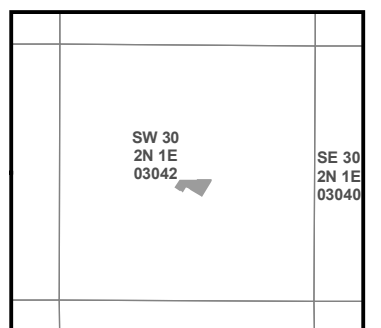
Renaissance Towne
Drive 265 W

Main Street

200 West



1 inch = 40 feet



S L B & M

NOTE: Distance, bearings and radius values are approximate. User needs to refer to the recorded legal descriptions for exact bearing and distances. For cadastral or technical information, see the dedicated plat and or legal descriptions in recorded documents.

