

# 280 NORTH 200 WEST PROFESSIONAL BUILDING CONDOMINIUMS

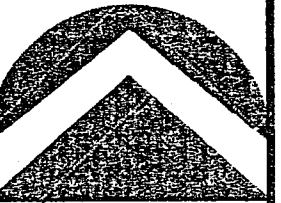
Part Lot 6 Block 43 BTS

A PORTION OF THE SW 1/4 OF SECTION 19, T2N. R1E. SLB&M.  
BOUNTIFUL CITY, DAVIS COUNTY UTAH

PREFIX  
03-252

LAST #  
0003

N

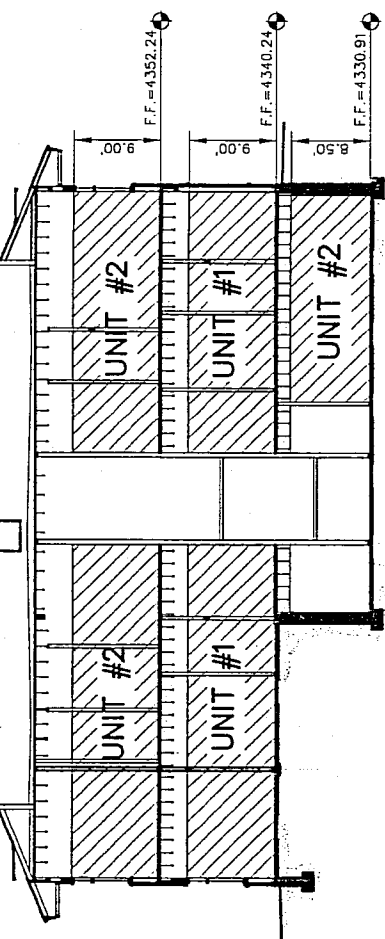
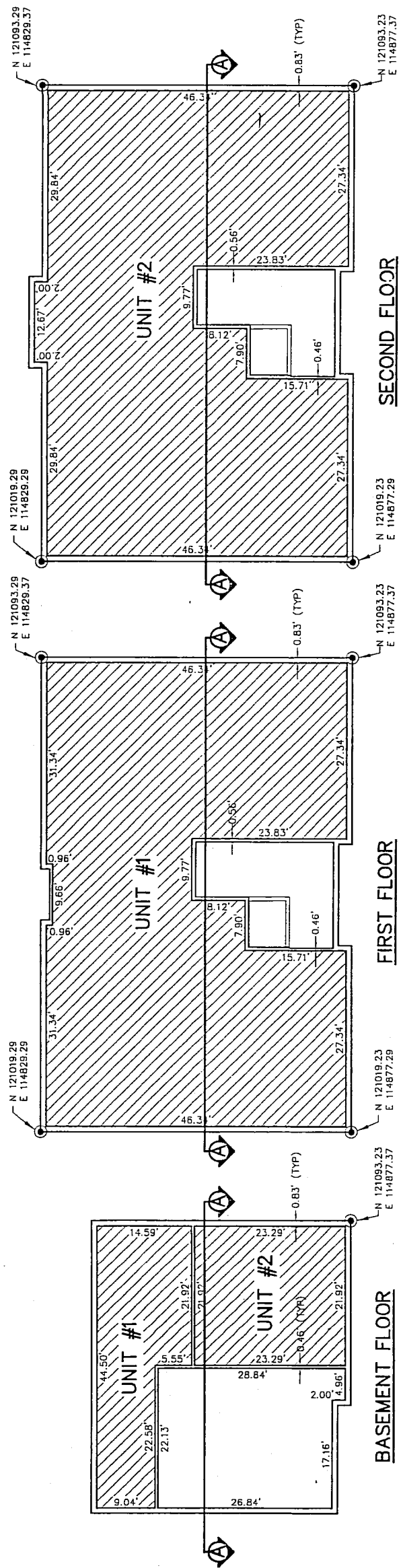


SCALE:  
1" = 20'

DEVELOPMENT: 280 NORTH 200 WEST PROFESSIONAL  
BUILDING CONDOMINIUMS  
CITY: BOUNTIFUL UNITS 1 THRU 2 & COMMON AREA

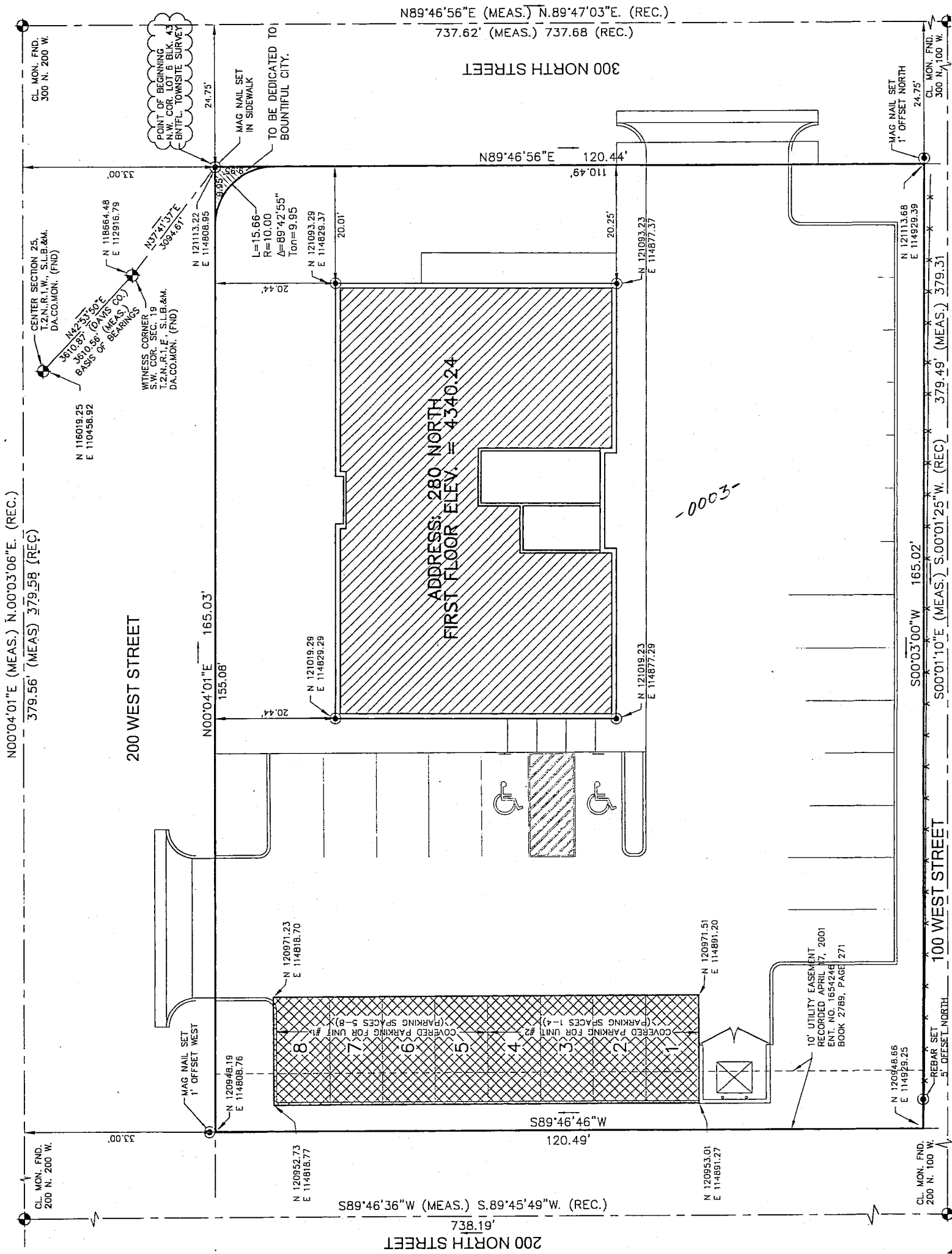
SW 1/4 SEC. 19, T.2N, R.1E  
PART LOT 6, BLOCK 43, BTS  
S.L.M. DAVIS COUNTY, UTAH

FILE # 4993  
R 01-27-10



UNIT #1 FIRST FLOOR 2986 S.F.  
BSMT. FLOOR 524 S.F.  
UNIT #2 SECOND FLOOR 3021 S.F.  
BSMT. FLOOR 511 S.F.

BUILDING SECTION "A"



UNIT	OWNER	PID
1	Mackay Dental Care Office Bldg LLC	0001
2	Mackay Dental Care Office Bldg LLC	0002
Common Area	Assoc. of Unit Owners of 280N. 200W. Prof Bldg Cmt	0003

**LEGEND**

- COMMON AREA & UTILITY EASEMENT
- LIMITED COMMON AREA
- PRIVATE OWNERSHIP

**NOTE**  
COORDINATES SHOWN ARE IN THE DAVIS COUNTY COORDINATE SYSTEM

**Byrd & Associates LLC**  
Engineers & Land Surveyors  
505 South Main Street  
Bountiful, Utah 84010  
Phone (801)-292-0400  
Fax (801)-292-8216

03 252