

# Renaissance Towne Centre

A Commercial Mixed Use Planned Unit Development, Phase 1, Plat 1, Amended  
 Being a Part of the Southwest Quarter of Section 30, T.2N., R.1E., S.L.B. & M.  
 and Block 38, North Mill Creek Plat, B.T.S., Bountiful City, Davis County, Utah

PREFIX #  
03-225

LAST #  
0006

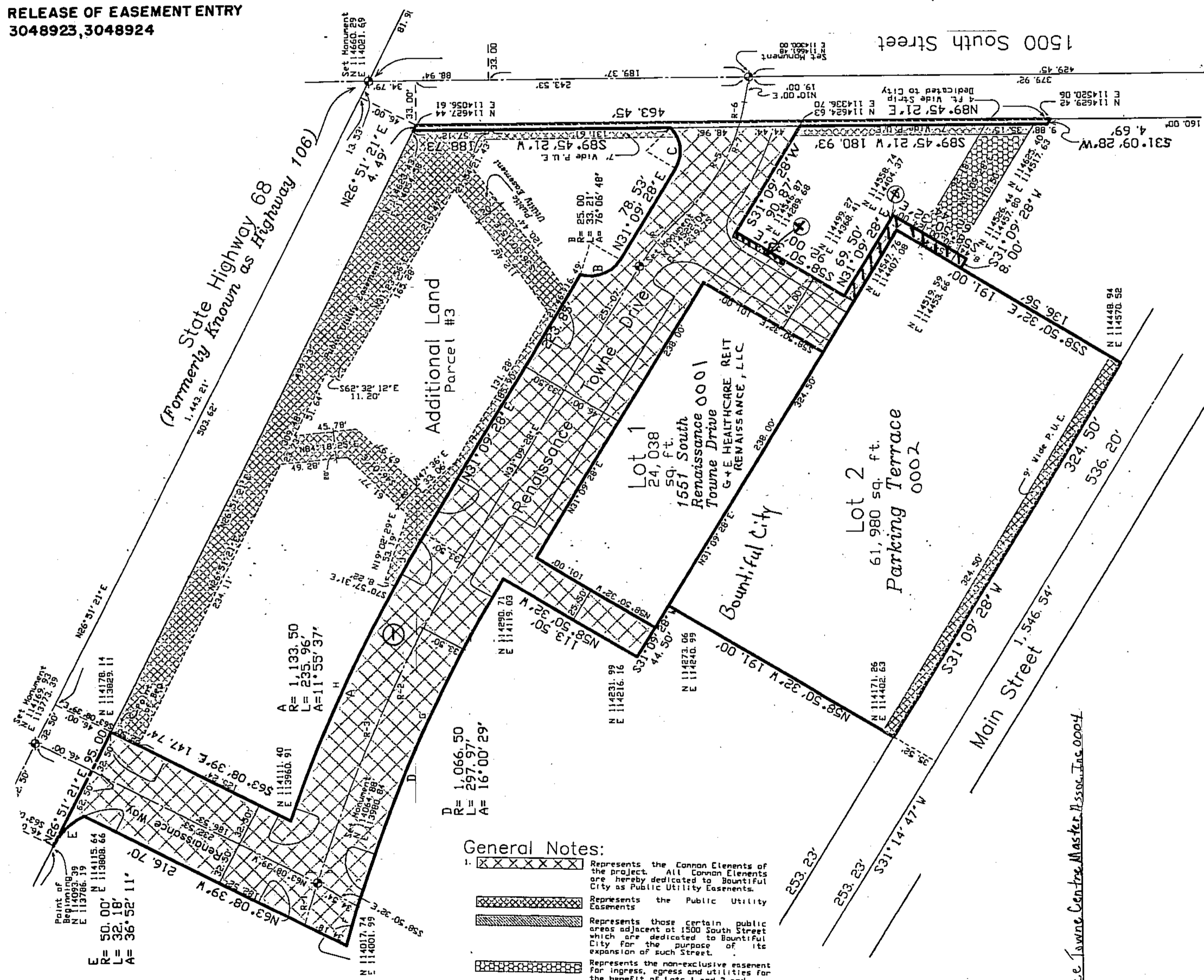
N



SCALE:  
1" = 60'

RELEASE OF EASEMENT ENTRY  
3048923, 3048924

2 Town Centre LLC 0005 RENAISSANCE TOWNE  
3 Town Centre LLC 0006 CENTRE PUD PHASE I PLAT 3  
SEE 03-279



**General Notes:**

- XXXXXX Represents the Canon Elements of the project. All Canon Elements are hereby dedicated to Bountiful City as Public Utility Easements.
  - XXXXXX Represents the Public Utility Easements
  - XXXXXX Represents those certain public areas adjacent at 1500 South Street which are dedicated to Bountiful City for the purpose of its expansion of such Street.
  - XXXXXX Represents the non-exclusive easement for ingress, egress and utilities for the benefit of Lots 1 and 2 and Additional Land Parcel #3.
- All coordinates are based on Davis County Surveyor's Office Datum.
- This Plat is subject to the Declaration of Covenants, Conditions, Easements and Restrictions for Renaissance Towne Centre, a Commercial Mixed Use Planned Unit Development recorded in the office of the Davis County Recorder on March 28th, 2003 as Entry No. 1847201 in Book 3257, Page 1255 and any subsequent amendments thereto ("Declaration").
- The Declaration provides, in part, for the construction, maintenance, repair and replacement of certain Canon Elements necessary or required for the full development

**FRD** Balling  
Engineering

© Renaissance Towne Centre Master Assoc. Inc. 0004

DEVELOPMENT: RENAISSANCE TOWNE CENTRE AMENDED  
 CITY: BOUNTIFUL  
 LOTS: 1, THRU 2  
 & COMMON AREA

BLK 38, NMC B.T.S.  
 SW 1/4 SEC. 30, T.2N., R.1E  
 S.L.M. DAVIS COUNTY, UTAH

FILE # 4288  
 R 08-15-05

225

03