

Bangerter Subdivision

Being a Part of the Southeast Quarter of Section 18, T.2N., R.1E. S.L.B. & M.
Centerville City, Davis County, Utah

PREFIX 13
03-198

LAST #
0003

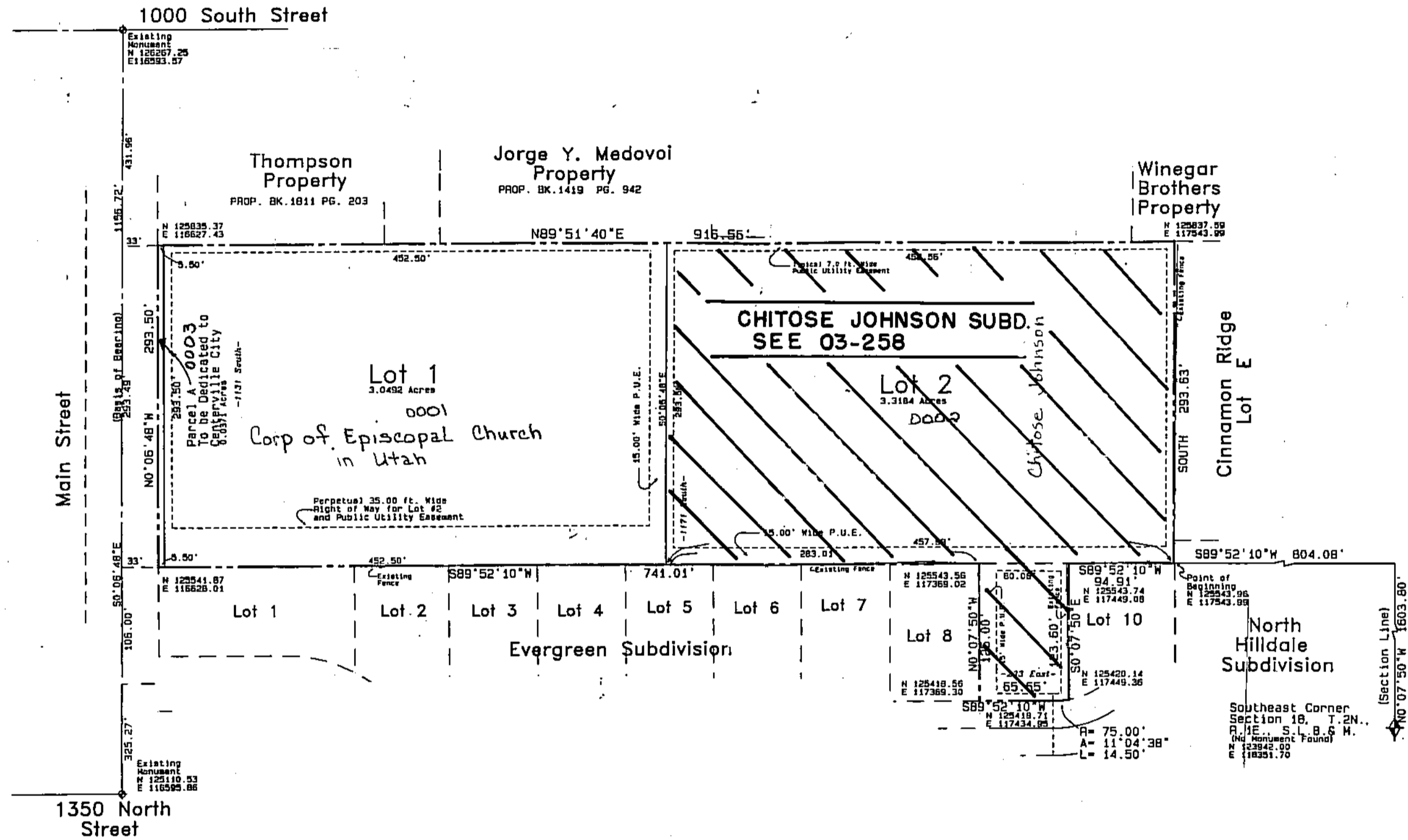
N



SCALE:
1" = 100'

198

03



Notes:

1. All easements shown are typical 7 ft. wide Public Utility Easements (P. U. E.) unless otherwise noted.
2. All coordinates shown are based on Davis County Surveyor's Office Datum.
3. Approval of this development plat by Centerville City does not constitute any representation as to the adequacy of sub-surface soil condition nor the location or depth of groundwater tables.
4. Lot 1 zoned C-2 as of February, 2001. Lot 2 zoned R-2 as of February, 2001.

Ball Balling
Engineering

DEVELOPMENT: BANGERTER SUBDIVISION

CITY: CENTERVILLE LOTS: 1 & 2 & PCL A

SE 1/4 SEC. 18, T.2N, R. 1E

S.L.M. DAVIS COUNTY, UTAH

R 3-30-01