

# TIERRA VISTA CONDOMINIUMS PHASE 1

LOCATED IN THE NORTH 1/2 OF BLOCK 3, NORTH MILL CREEK PLAT  
 BOUNTIFUL TOWNSITE SURVEY, ALSO LOCATED IN THE SW 1/4 SECTION 19 T2N, R1E  
 BOUNTIFUL CITY, DAVIS COUNTY, UTAH

PREFIX  
 03-185  
 LAST #  
 0009 10

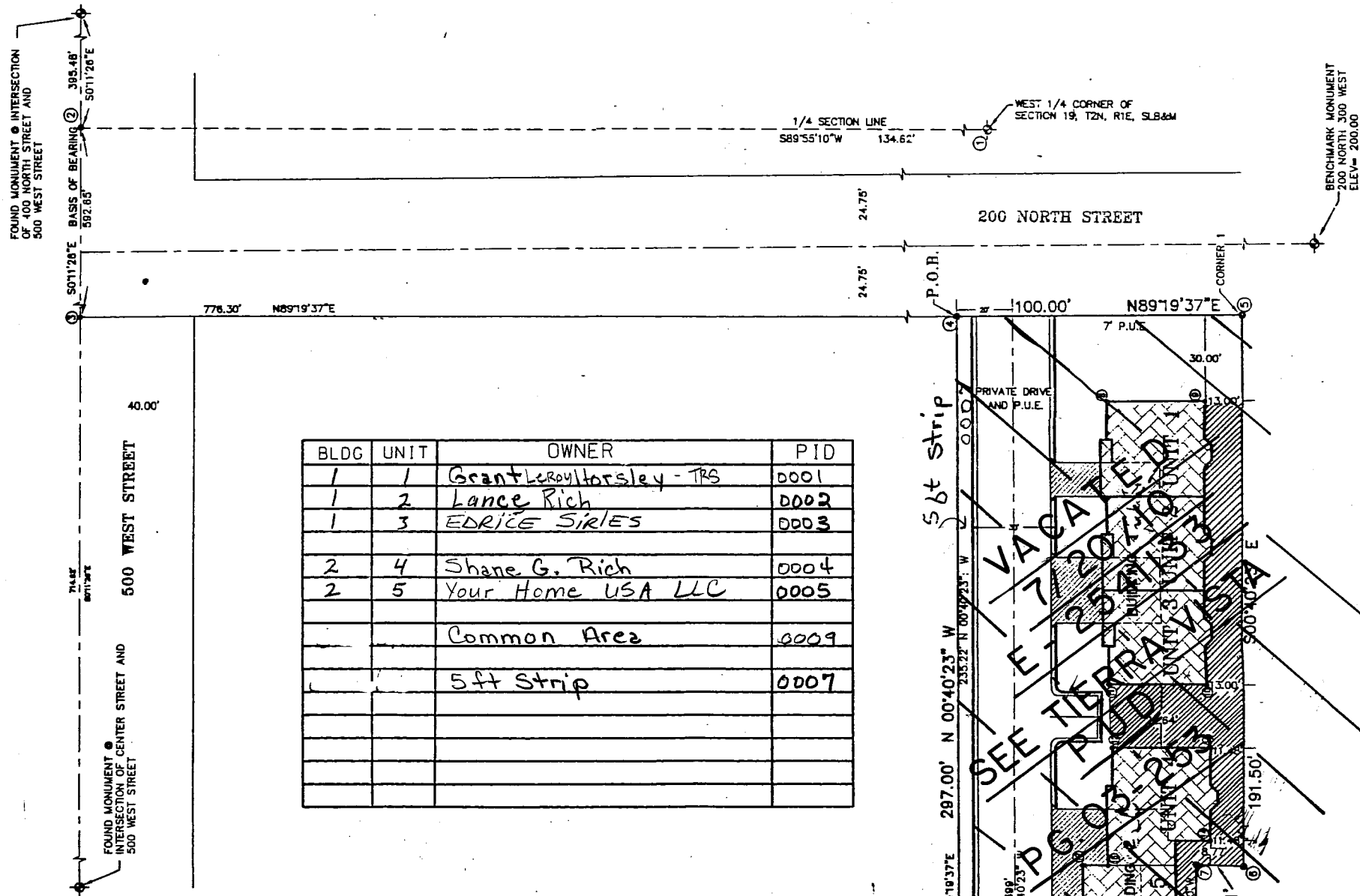


SCALE:  
 1" = 50'

DEVELOPMENT: TIERRA VISTA CONDOMINIUMS PH.1  
 CITY: BOUNTIFUL  
 BLDGS: 1 & 2 UNITS: 1 THRU 5 & COMMON & CONVERTABLE

PT BLK 3 BNTFL NMC PLAT  
 SW 1/4 SEC 19 T2N R1E  
 S.L.M. DAVIS COUNTY, UTAH

R 10-14-99



BLDG	UNIT	OWNER	PID
1	1	Grant LeRoy Horsley - TRS	0001
1	2	Lance Rich	0002
1	3	EDRICE SRIES	0003
2	4	Shane G. Rich	0004
2	5	Your Home USA LLC	0005
		Common Area	0009
		5 ft Strip	0007

ADDRESS TABLE

UNIT 1	385 W 200 N # 1
UNIT 2	385 W 200 N # 2
UNIT 3	385 W 200 N # 3
UNIT 4	385 W 200 N # 4
UNIT 5	385 W 200 N # 5

LEGEND

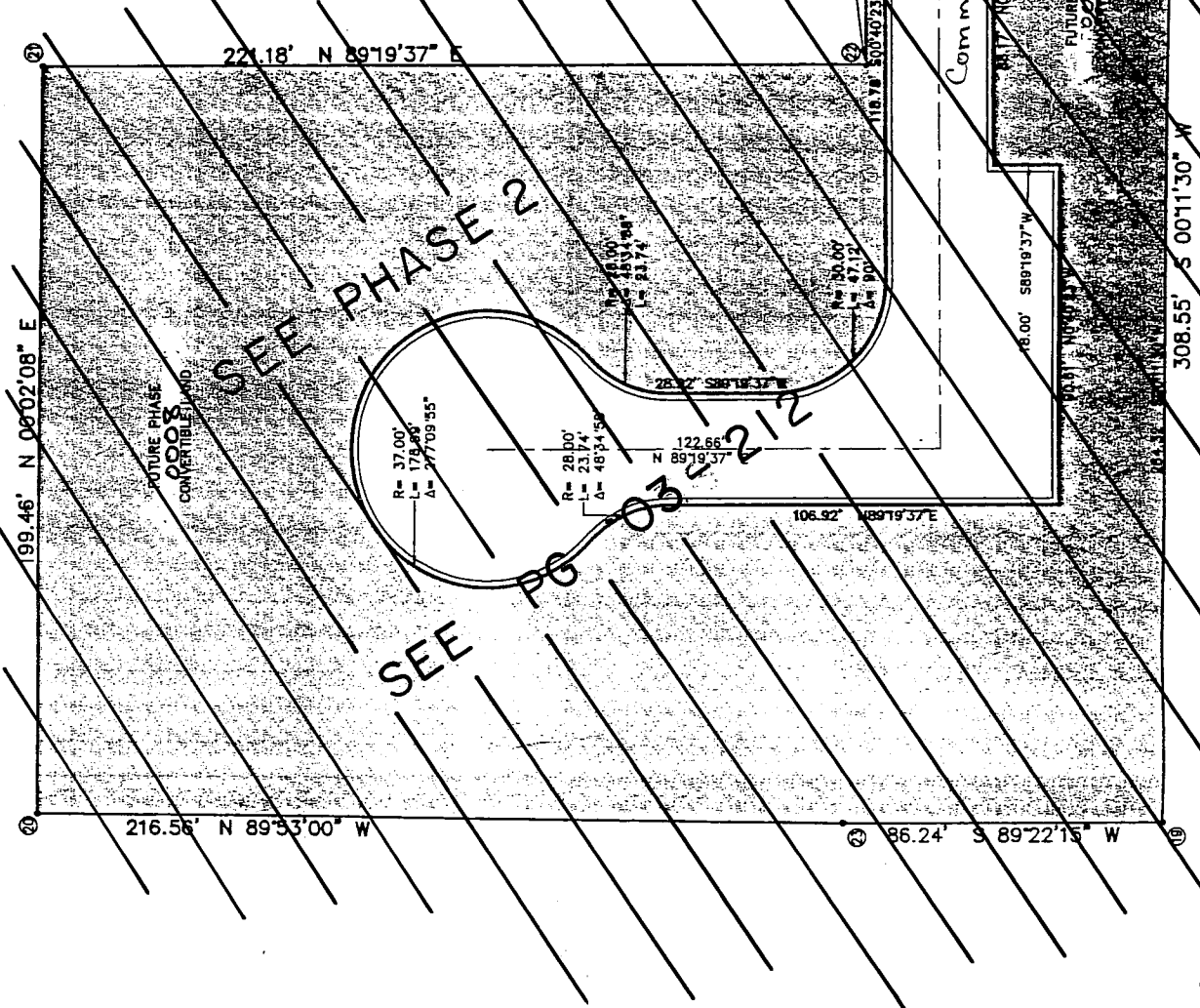
PRIVATE	
LIMITED COMMON	
COMMON	

COORDINATE TABLE

Node #	North	East	Node #	North	East
①	121304.88	113075.13	⑩	120495.84	113786.18
②	121304.89	112940.51	⑪	120530.59	113784.17
③	120712.04	112942.48	⑫	120530.59	113773.01
④	120721.16	113718.73	⑬	120222.62	113803.73
⑤	120722.33	113818.72	⑭	120222.12	113500.94
⑥	120530.85	113820.97	⑮	120421.58	113501.08
⑦	120531.17	113804.77	⑯	120424.18	113722.23
⑧	120307.81	113778.80	⑰	120221.68	113717.50
⑨	120682.18	113806.09			
⑩	120594.48	113807.23			
⑪	120594.08	113773.24			
⑫	120571.84	113775.01			
⑬	120571.84	113809.01			
⑭	120539.34	113809.01			
⑮	120495.84	113797.01			

NOTES:

- ALL COORDINATES SHOWN ARE BASED ON DAVIS COUNTY SURVEYOR'S OFFICE DATUM



185

03