

CANTERBURY HALL CONDOMINIUM

A PART OF THE SOUTHEAST QUARTER OF SECTION 19,
TOWNSHIP 2 NORTH, RANGE 1 EAST, SALT LAKE BASE AND MERIDIAN
PT LOT 3 BLOCK 11, BOUNTIFUL TOWNE-SITE PLAT "A"
BOUNTIFUL CITY, DAVIS COUNTY, UTAH

PREFIX
03-180
LAST #
0005

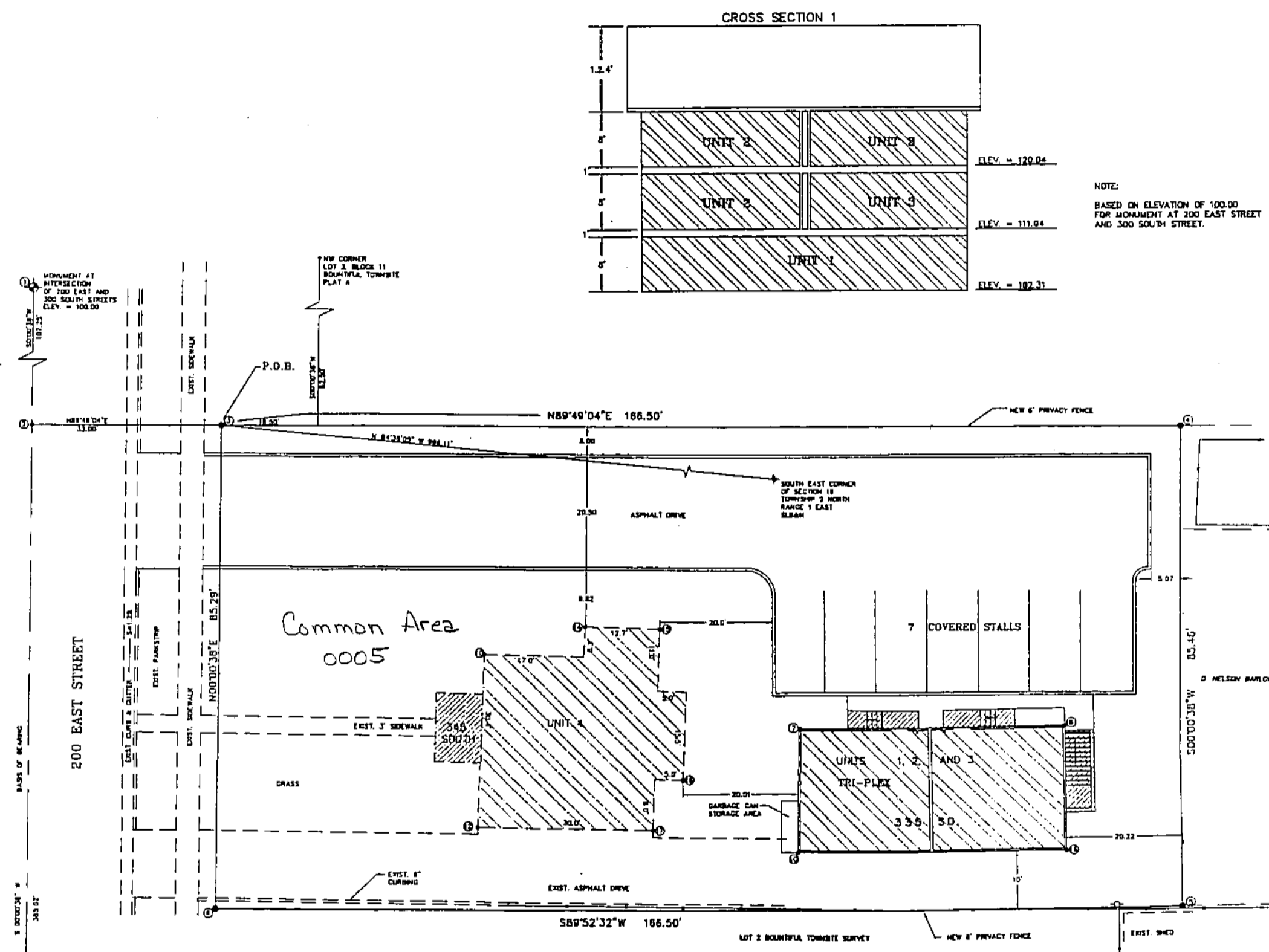


SCALE:
1" = 20'

SUBDIVISION: CANTERBURY HALL
CONDOMINIUMS
CITY: BOUNTIFUL UNITS: 1 - 4, COMMON AREA

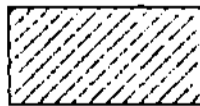
SE 1/4 SEC 19 T2N R1E
SALT LAKE MERIDIAN
DAVIS COUNTY, UTAH


R 7*9*99




UNIT	OWNER	PID
1	Blake Capson	0001
2	Michael John Fadden II	0002
3	Blake Capson - Trs	0003
4	Lori Mackay	0004
	Common Area	0005

LEGEND

LIMITED COMMON 

COMMON 

PRIVATE 

180

03