

THE COURTYARD AT PAGES LANE A CONDOMINIUM DEVELOPMENT

LOCATED IN THE EAST HALF OF SECTION 18, TOWNSHIP 2 NORTH, RANGE 1 EAST
SALT LAKE BASE & MERIDIAN, CENTERVILLE CITY, DAVIS COUNTY, UTAH

PREFIX
03-162

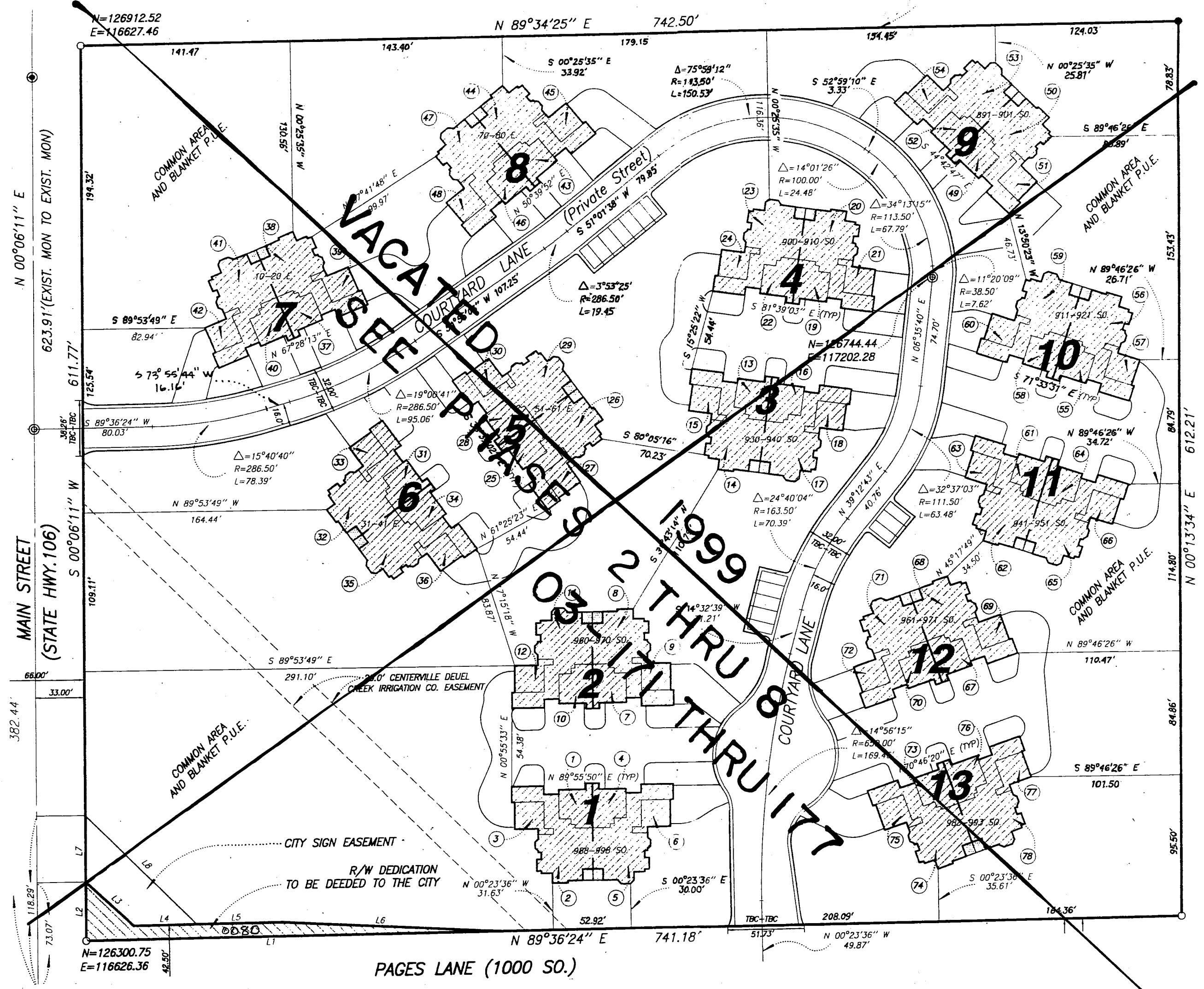
LAST #
0080



SCALE:
1" = 60'

SUBDIVISION: COURTYARD AT PAGES LANE
A CONDO
CITY: CENTERVILLE BLDGS: 1-13 UNITS: 1-78
AND COMMON AREA

EAST 1/2 SECTION 18 T2N R1E
SALT LAKE MERIDIAN
DAVIS COUNTY UTAH
R 6*19*97



LINE DATA:

LINE	BEARING	DISTANCE
1	S 89°36'24" W	282.53'
2	N 00°06'11" E	39.78'
3	S 47°08'29" E	44.19'
4	N 89°36'24" E	42.61'
5	N 89°36'24" E	57.39'
6	S 86°46'10" E	150.30'
7	N 00°06'11" E	45.22'
8	S 44°58'36" E	106.00'

NOTES:

- ALL COMMON AREAS ARE ENCUMBERED WITH A BLANKET P.U.E..
- PROPERTY ZONED R-2 AT TIME OF DEVELOPMENT.
- PROPERTY IS SUBJECT TO A CONDITIONAL USE PERMIT APPROVED BY CENTERVILLE CITY 3-26-97.
- THE COMMON AREA WILL BE OWNED AND MAINTAINED BY THE COURTYARD AT PAGES LANE HOMEOWNERS ASSOCIATION, A UTAH NON-PROFIT CORPORATION.
- ALL AREAS INCLUDING ROADWAYS NOT WITHIN NUMBERED UNITS ARE COMMON AREAS AND FACILITIES CERTAIN OF WHICH ARE MARKED COMMON AREA HEREON.
- NO BASEMENTS ARE ALLOWED IN THIS CONDOMINIUM DEVELOPMENT.
- PUBLIC SIDEWALK IN SOME LOCATIONS IS ON PRIVATE PROPERTY. SIDEWALKS ARE PERMITTED PURSUANT TO BLANKET P.U.E. OVER COMMON AREAS.

LEGEND:

- SECTION MONUMENT
- EXISTING FIRE HYDRANT
- PROPOSED FIRE HYDRANT
- EXISTING MONUMENT
- MONUMENT TO BE SET
- SET REBAR, TAGGED L.S. 330833 AT ALL CORNERS, UNLESS OTHERWISE NOTED
- FOUND REBAR
- PRIVATE OWNERSHIP
- LIMITED COMMON AREA
- COMMON AREA & BLANKET P.U.E.
- UNIT NUMBER (TYP.)

THOMPSON-HYSELL ENGINEERS, INC.
428 EAST 6400 SOUTH, MURRAY, UTAH 84107 (801) 265-9861 FAX: (801) 265-9895

03 162