

INPUT 7-95

PREFIX  
03-156

LAST #



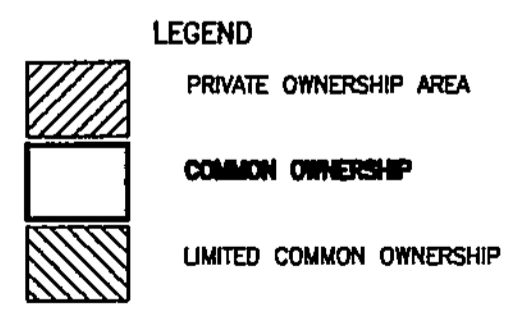
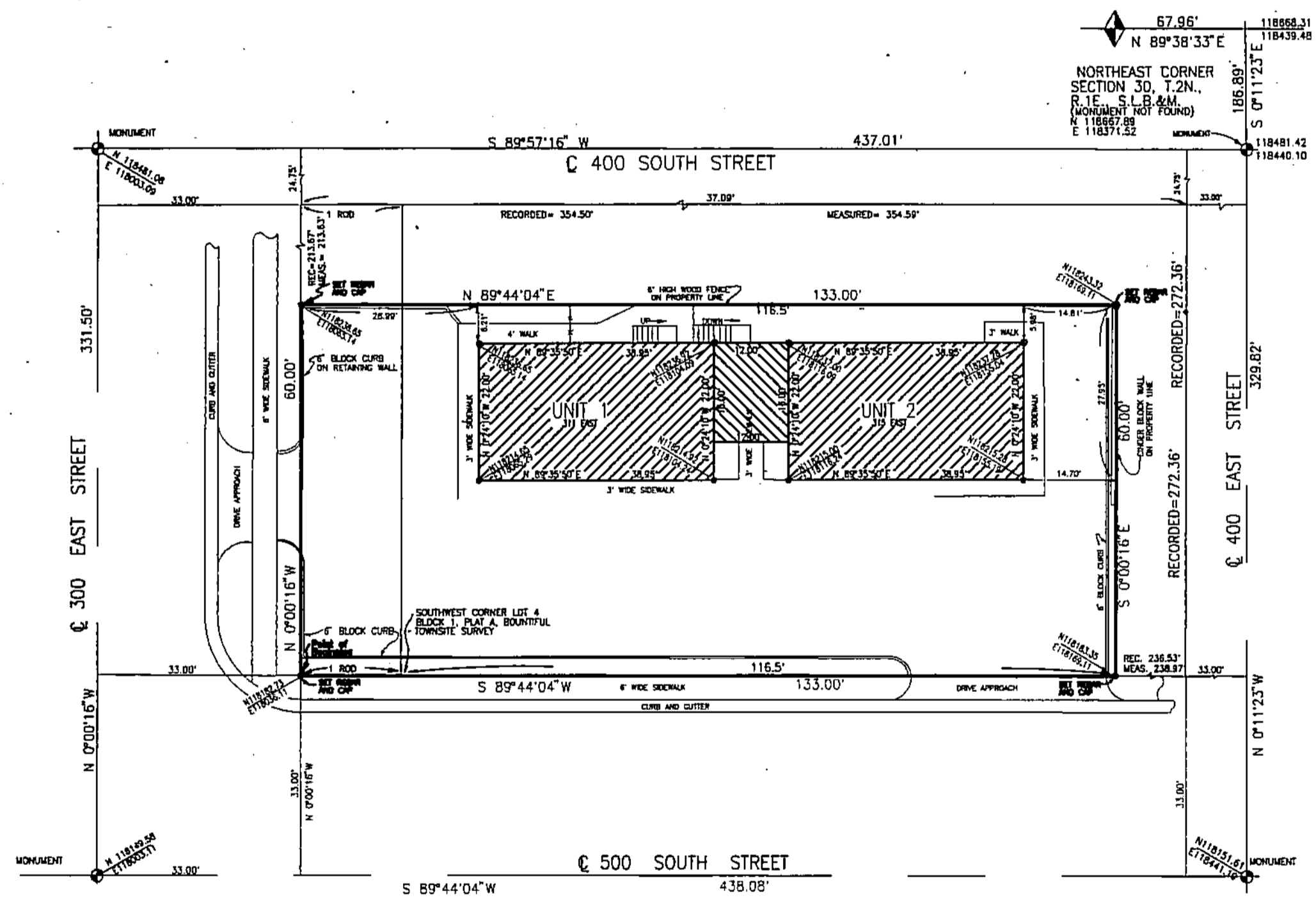
SCALE:  
1" = 20'

# DENTAL AND VISION PLAZA CONDOMINIUMS

BEING A PART OF BLOCK 1, PLAT A, BOUNTIFUL TOWNSITE SURVEY  
BOUNTIFUL CITY, DAVIS COUNTY, UTAH, A PART OF SECTION 30, T.2N., R.1E., S.L.B.&M.

OWNERSHIP:

UNIT 1: Douglas R. Smith  
UNIT 2: Douglas R. Smith  
COMMON AREA: Douglas R. Smith



Note: All coordinates are based on the Davis county Survey Datum.

156

03

SUB: DENTAL & VISION PLAZA CONDOS.  
CITY: BOUNTIFUL UNITS: 1,2 & COMMON

PT BLK 1 PLAT A BTS

PT SECTION 30 T 2N R 1E  
SALT LAKE MERIDIAN  
DAVIS COUNTY UTAH