

BOUNTIFUL MANOR CONDOMINIUMS

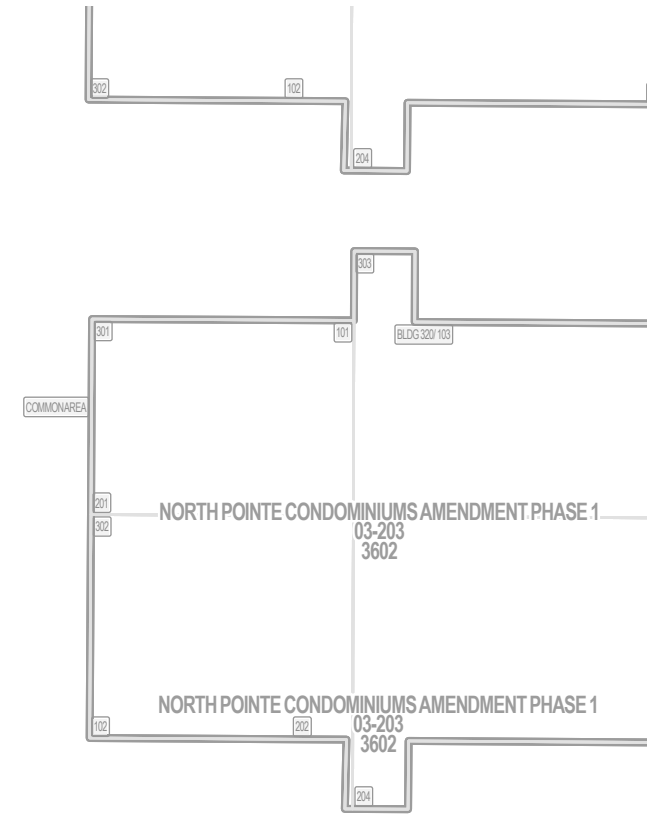
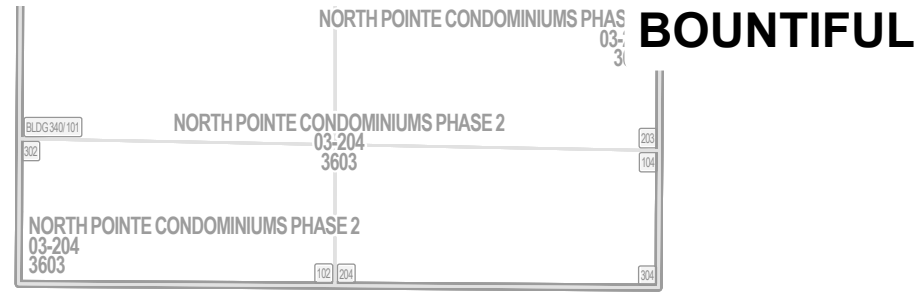
Tax ID Prefix

03-153

Plat ID: 2413

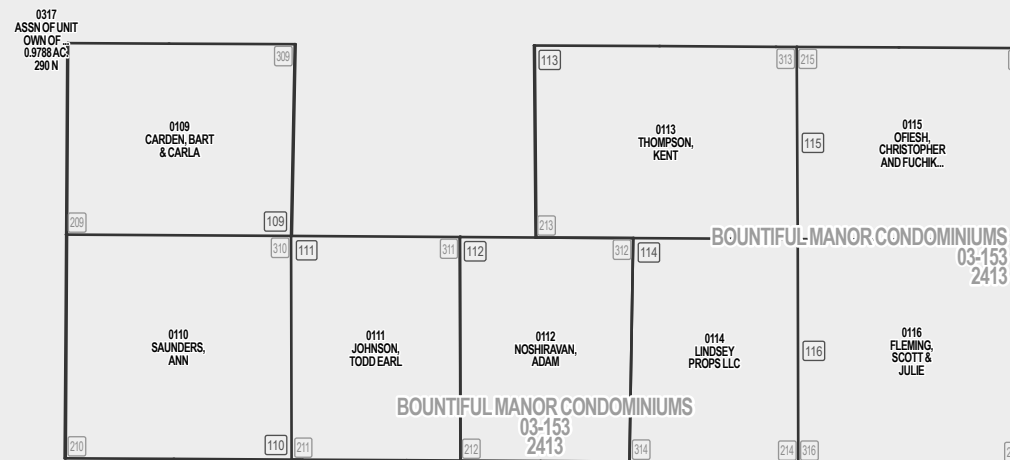
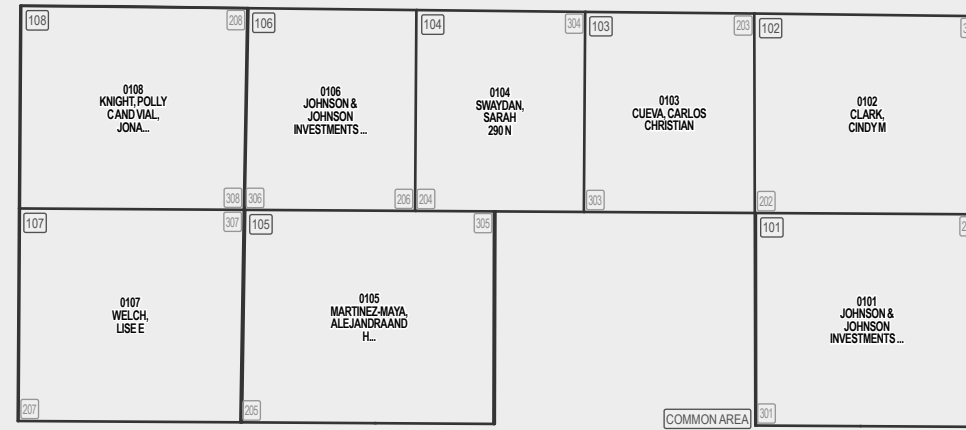
Sheet 1 of 3

Year Recorded: 1995



NORTH POINTE CONDOMINIUMS AMENDMENT PHASE 1
03-203
3602

03-063
9937



N 500 W



Parcel ID

Lot Number

1 inch = 30 feet

NE 24 2N 1W 06-037	NW 19 2N 1E 03-019
SE 24 2N 1W 06-039	SW 19 2N 1E 03-019

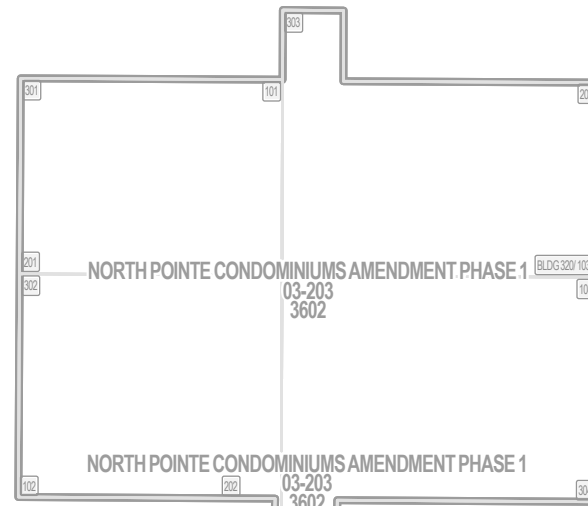
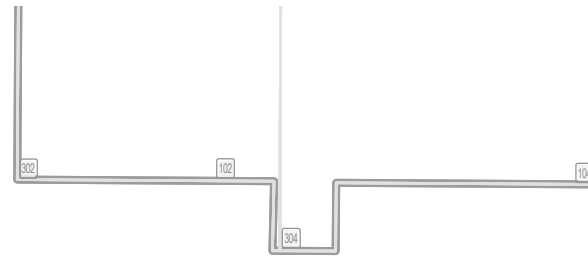
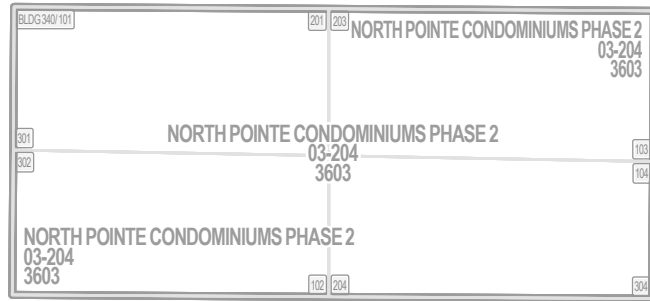
S L B & M

NOTE: Distance, bearings and radius values are approximate. User needs to refer to the recorded legal descriptions for exact bearing and distances. For cadastral or technical information, see the dedicated plat and or legal descriptions in recorded documents.

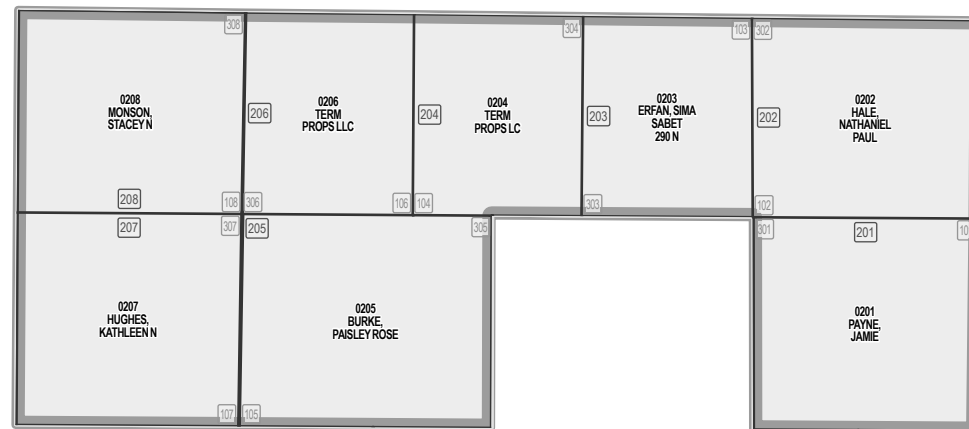


BOUNTIFUL MANOR CONDOMINIUMS

BOUNTIFUL



NORTH POINTE CONDOMINIUMS AMENDMENT PHASE 1
03-203
3602



BOUNTIFUL MANOR CONDOMINIUMS
03-153
2413

COMMONAREA

Tax ID Prefix

03-153

Plat ID: 2413

Sheet 2 of 3

Year Recorded: 1995

BOUNTIFUL GARDENS APARTMENT HOMES
03-063
9937



Parcel ID

Lot Number

1 inch = 30 feet

NE 24 2N 1W 06-037	NW 19 2N 1E 03-019
SE 24 2N 1W 06-039	SW 19 2N 1E 03-019

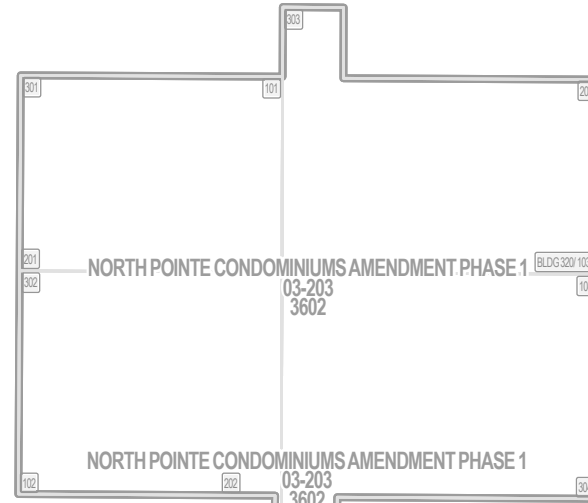
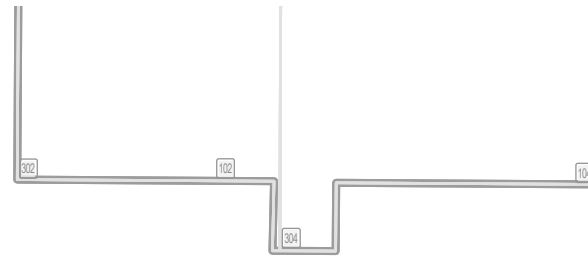
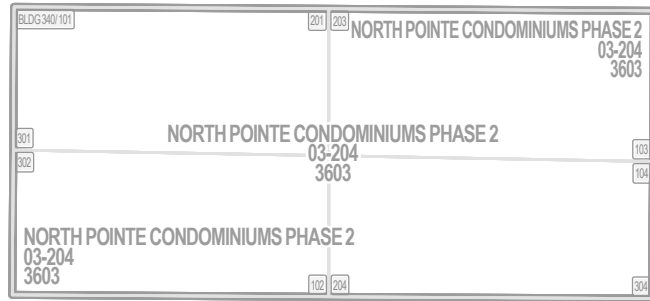
S L B & M

NOTE: Distance, bearings and radius values are approximate. User needs to refer to the recorded legal descriptions for exact bearing and distances. For cadastral or technical information, see the dedicated plat and or legal descriptions in recorded documents.



BOUNTIFUL MANOR CONDOMINIUMS

BOUNTIFUL



NORTH POINTE CONDOMINIUMS AMENDMENT PHASE 1
03-203
3602



BOUNTIFUL MANOR CONDOMINIUMS
03-153
2413

BOUNTIFUL GARDENS APARTMENT HOMES
03-063
9937

Tax ID Prefix

03-153

Plat ID: 2413

Sheet 3 of 3

Year Recorded: 1995



Parcel ID

Lot Number

1 inch = 30 feet

NE 24 2N 1W 06-037	NW 19 2N 1E 03-019
SE 24 2N 1W 06-039	SW 19 2N 1E 03-019

S L B & M

NOTE: Distance, bearings and radius values are approximate. User needs to refer to the recorded legal descriptions for exact bearing and distances. For cadastral or technical information, see the dedicated plat and or legal descriptions in recorded documents.

