

# SARAH BURNS SUBDIVISION

BEING A PART OF THE NORTH HALF OF SECTION 30, T.2N., R.1E., S.L.B.8M.,  
ALSO BEING A PART OF LOT 4, BLOCK L, N.M.C PLAT  
BOUNTIFUL TOWNSITE SURVEY

PRELIM

03-141  
LAST#

NORTH

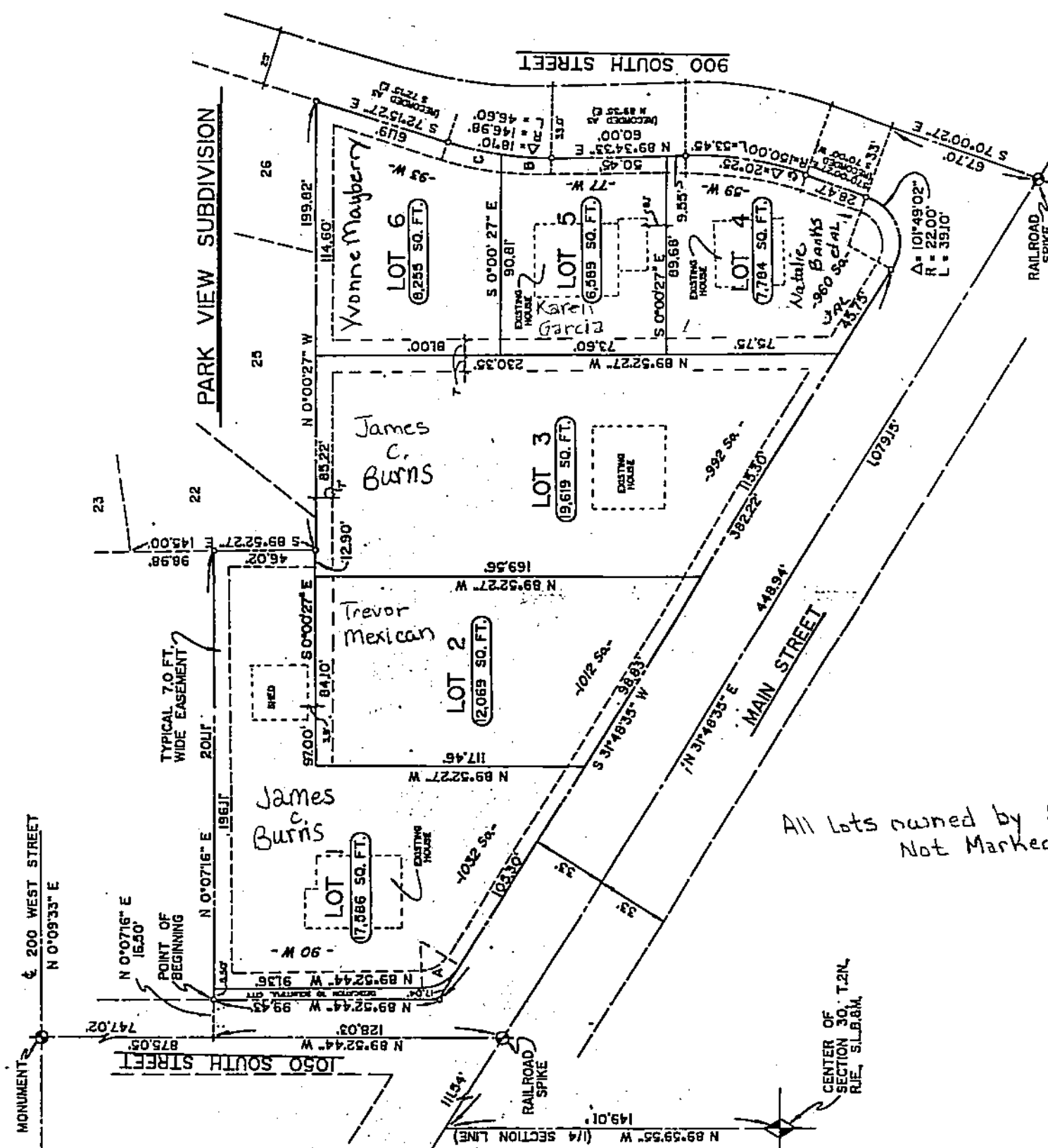


SCALE  
1" = 60'

SUBDIVISION SARAH BURNS  
CITY BOUNTIFUL LOTS 1 TO 6  
DAVIS COUNTY GEO-GRAPHIC INFORMATION DIVISION

N1/2 SECTION 30 T2N R1E  
Salt Lake Meridian  
Davis County, Utah

R-2-25-91



All lots owned by Sarah C. Burns-trustee - etal  
Not Marked

### CURVE INFORMATION

CURVE	RADIUS	ANGLE	LENGTH	CHORD	TANGENT
A	20.00'	56°18'41"	20.35'	19.49'	11.6'
B	146.98'	9°03'30"	23.24'	23.22'	11.64'
C	146.98'	9°06'30"	23.36'	23.34'	11.71'

### NOTE:

ALL EASEMENTS ARE TYPICAL 7.0 FT. WIDE  
PUBLIC UTILITY EASEMENTS.

141

03