

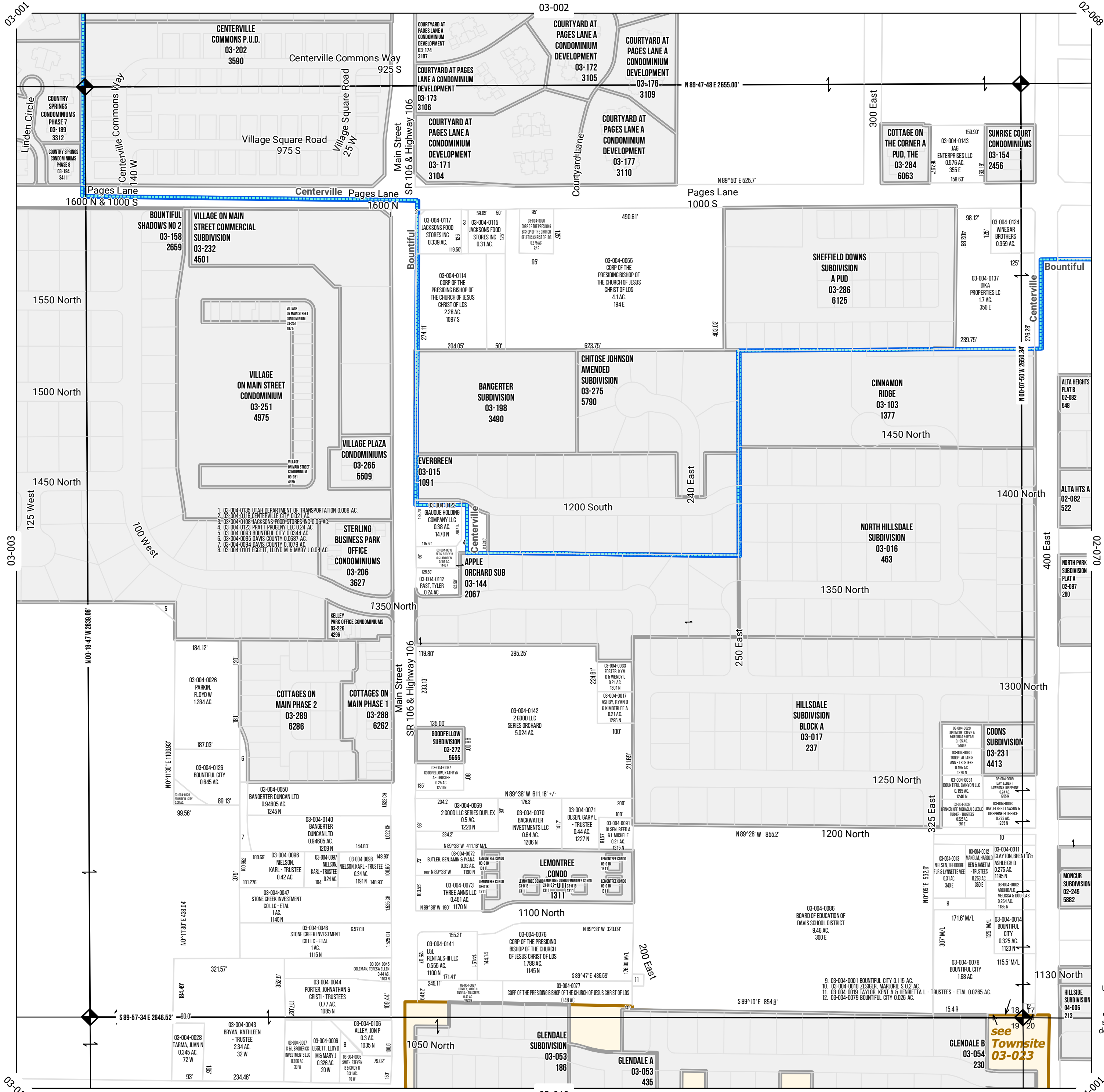
SE Quarter  
Section 18  
2N 1E

SLB & M

Tax ID Prefix

03 - 004

Sheet 1 of 1



- 1. 03-004-0135 UTAH DEPARTMENT OF TRANSPORTATION 0.008 AC.
- 2. 03-004-0116 CENTERVILLE CITY 0.021 AC.
- 3. 03-004-0108 JACKSONS FOOD STORES INC 0.006 AC.
- 4. 03-004-0123 PRATT PROGENY LLC 0.24 AC.
- 5. 03-004-0093 BOUNTIFUL CITY 0.044 AC.
- 6. 03-004-0095 DAVIS COUNTY 0.0897 AC.
- 7. 03-004-0094 DAVIS COUNTY 0.1779 AC.
- 8. 03-004-0101 EGETT, LLOYD M & MARY J 0.04 AC.

**COONS SUBDIVISION**  
03-231  
4413

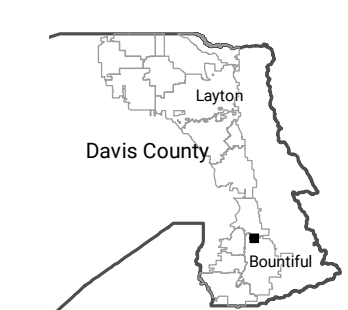
**LEMONTREE CONDO**  
1311

**MONCUR SUBDIVISION**  
02-245  
5882

**GLENDALE SUBDIVISION**  
03-053  
186

**GLENDALE B**  
03-054  
230

N  
1 inch = 200 feet



NOTE: Distance, bearings and radius values are approximate. User needs to refer to the recorded legal descriptions for exact bearing and distances. For cadastral or technical information see the dedicated plat and or legal descriptions in recorded documents.



Last update: 10/30/2020