

Schultz Subdivision

Being a Part of the Southwest Quarter of Section 8, T.2N., R.1E., S.L.B. & M.
 Centerville City, Davis County, Utah
 PART OF LOTS 1 AND 4, BLOCK 13, PLAT A, C.T.S.

PREFIX

02-241

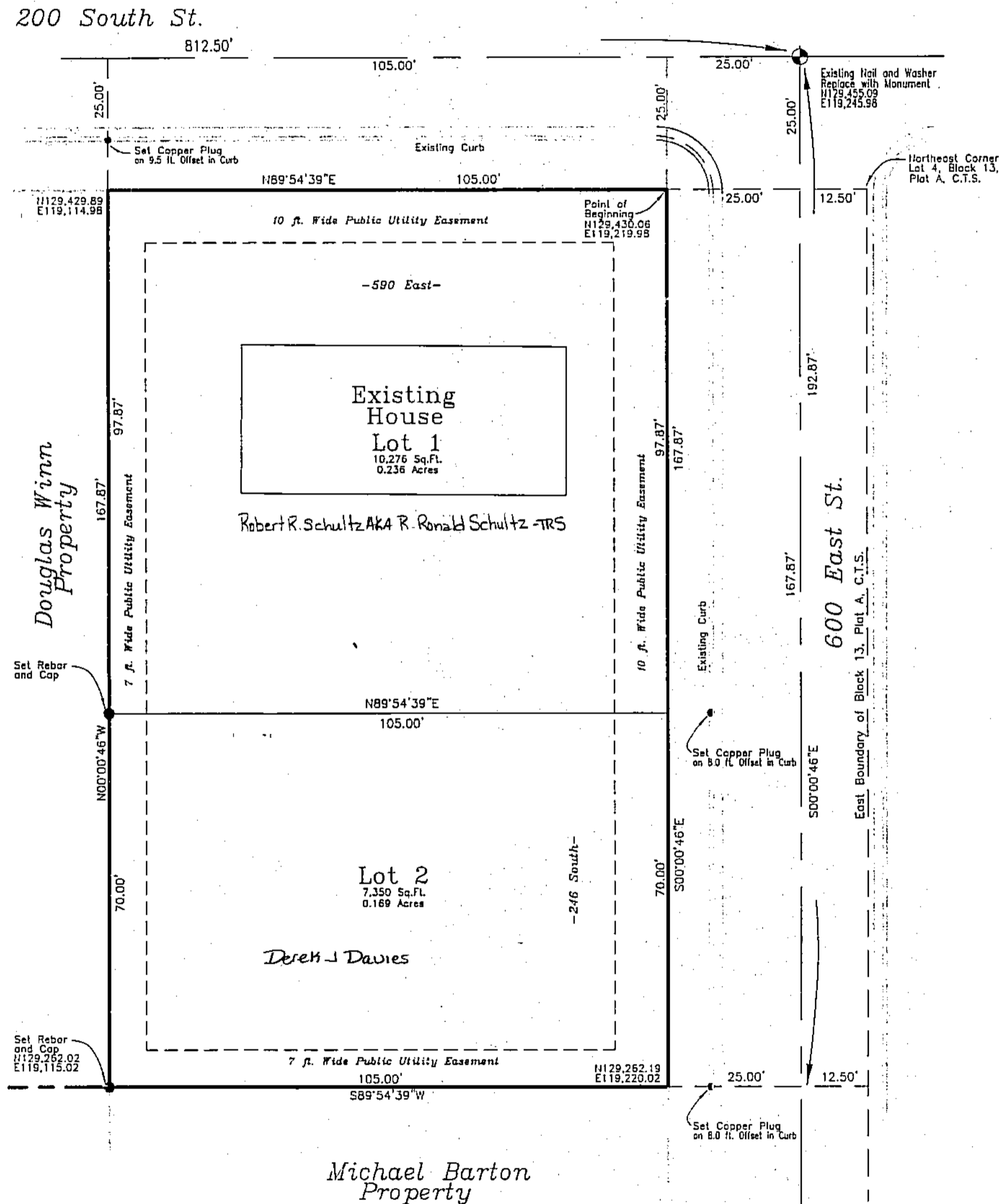
LAST #

0002



SCALE:

1" = 20'



Legend

Boundary Line

Section Line

Center Line

Lot Lines

Set Rebar and Cap or Copper Plug in Curb

Record Monument

Section Corner

Public Utility Easements

Ballinger Engineering
 323 East Pages Lane
 P.O. Box 805
 Centerville, Utah 84014
 Phone: (801) 295-7237
 Fax: (801) 299-0419

DEVELOPMENT: SHULTZ SUBDIVISION
 CITY: CENTERVILLE LOTS: 1 - 2

SW 1/4 SEC. 8, T.2N, R.1 E
 S.L.M. DAVIS COUNTY, UTAH
 PART OF LOTS 1 & 4
 BLOCK 13, PLAT A, C.T.S.

FILE #5582
 R-10-30-15

241

02