

KING COMMERCIAL DEVELOPMENT SUBDIVISION

AMENDING LOTS 2 & 3 OF PARRISH PARK SUBDIVISION

LOCATED IN THE WEST HALF OF SECTION 7,
TOWNSHIP 2 NORTH, RANGE 1 EAST,
SALT LAKE BASE AND MERIDIAN
CENTERVILLE CITY, DAVIS COUNTY, STATE OF UTAH

PREFIX

02-237

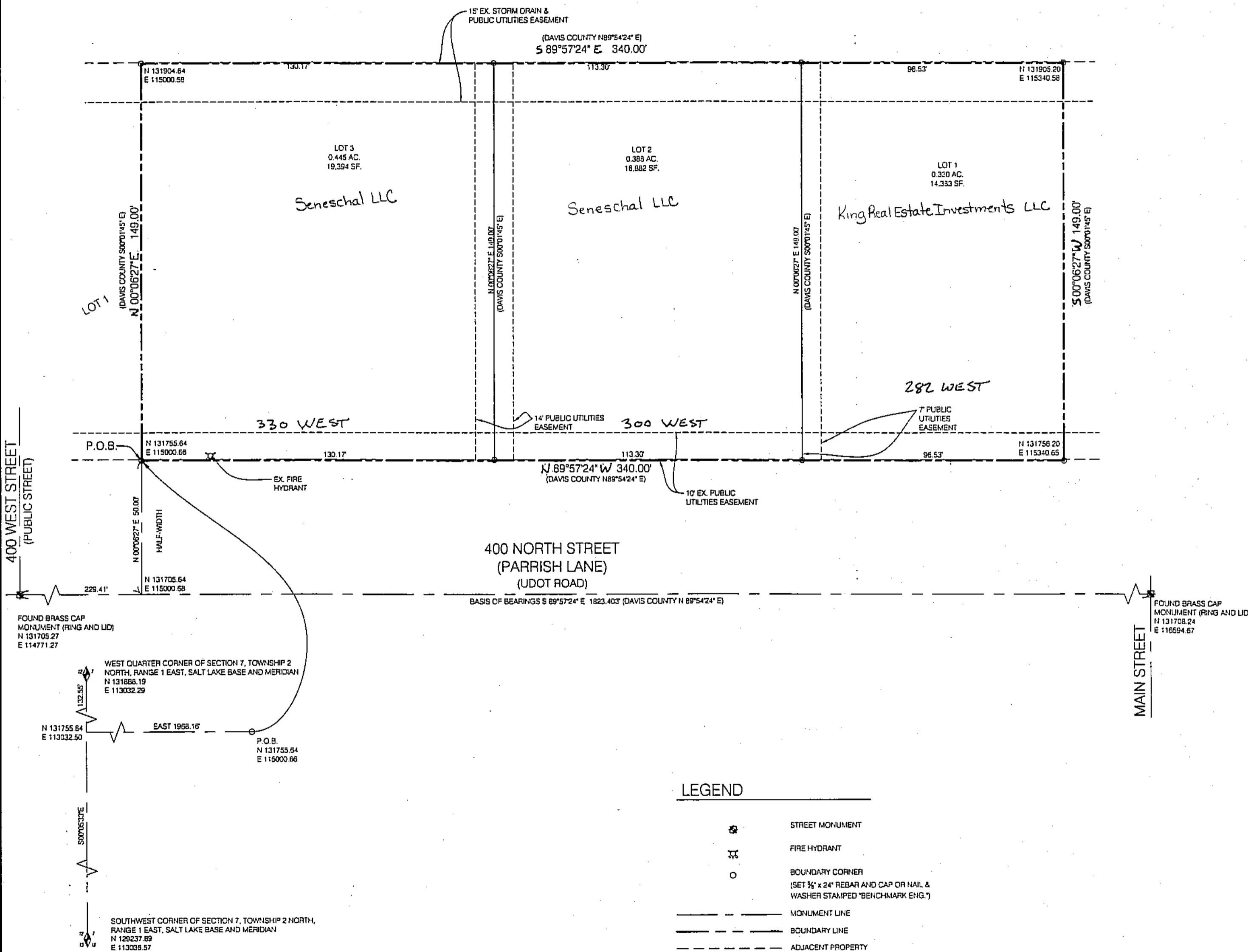
LAST #

0003



SCALE:

1" = 30'



PLAT NOTES:

1. ALL COORDINATES SHOWN ARE BASED ON DAVIS COUNTY SURVEYORS OFFICE DATUM.
2. APPROVAL OF THIS SUBDIVISION PLAT BY CENTERVILLE CITY DOES NOT CONSTITUTE ANY REPRESENTATION AS TO THE ADEQUACY OF SUB-SURFACE SOIL CONDITION NOR THE LOCATION OR DEPTH OF GROUNDWATER TABLES.
3. SECTION CORNER TIES ARE BASED OFF OF DAVIS COUNTY TOWNSHIP REFERENCE PLAT.
4. ROTATE SUBDIVISION BEARINGS 0°08'12\"/>

BENCHMARK CIVIL
BENCHMARK ENGINEERING & LAND SURVEYING
8130 SOUTH STATE STREET SUITE # 100
SANDY, UTAH 84070 (801) 543-7192
www.benchmarkcivil.com

DEVELOPMENT: KING COMMERCIAL DEVELOPMENT SUBDIVISION
CITY: CENTERVILLE LOTS: 1 THRU 3

W 1/2 SEC. 7, T 2N, R 1E
S.L.M. DAVIS COUNTY, UTAH
AMENDING LOTS 2 & 3 OF
PARRISH PARK SUBDIVISION

FILE #5425

R-08-04-14

237

02