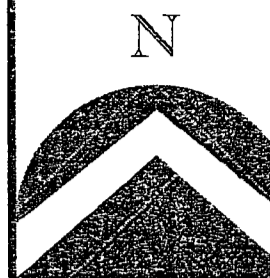


# MATT JOHNSON SUBDIVISION

A PORTION OF THE NORTHWEST QUARTER OF SECTION 8, T2N. R1E. SLB&M.  
 CENTERVILLE CITY, DAVIS COUNTY UTAH  
 PART OF LOT 3 BLOCK-E, B.C. PLAT OF CENTERVILLE  
 T. S. SURVEY

PREFIX  
02-232

LAST #  
0002



SCALE:  
1" = 30'

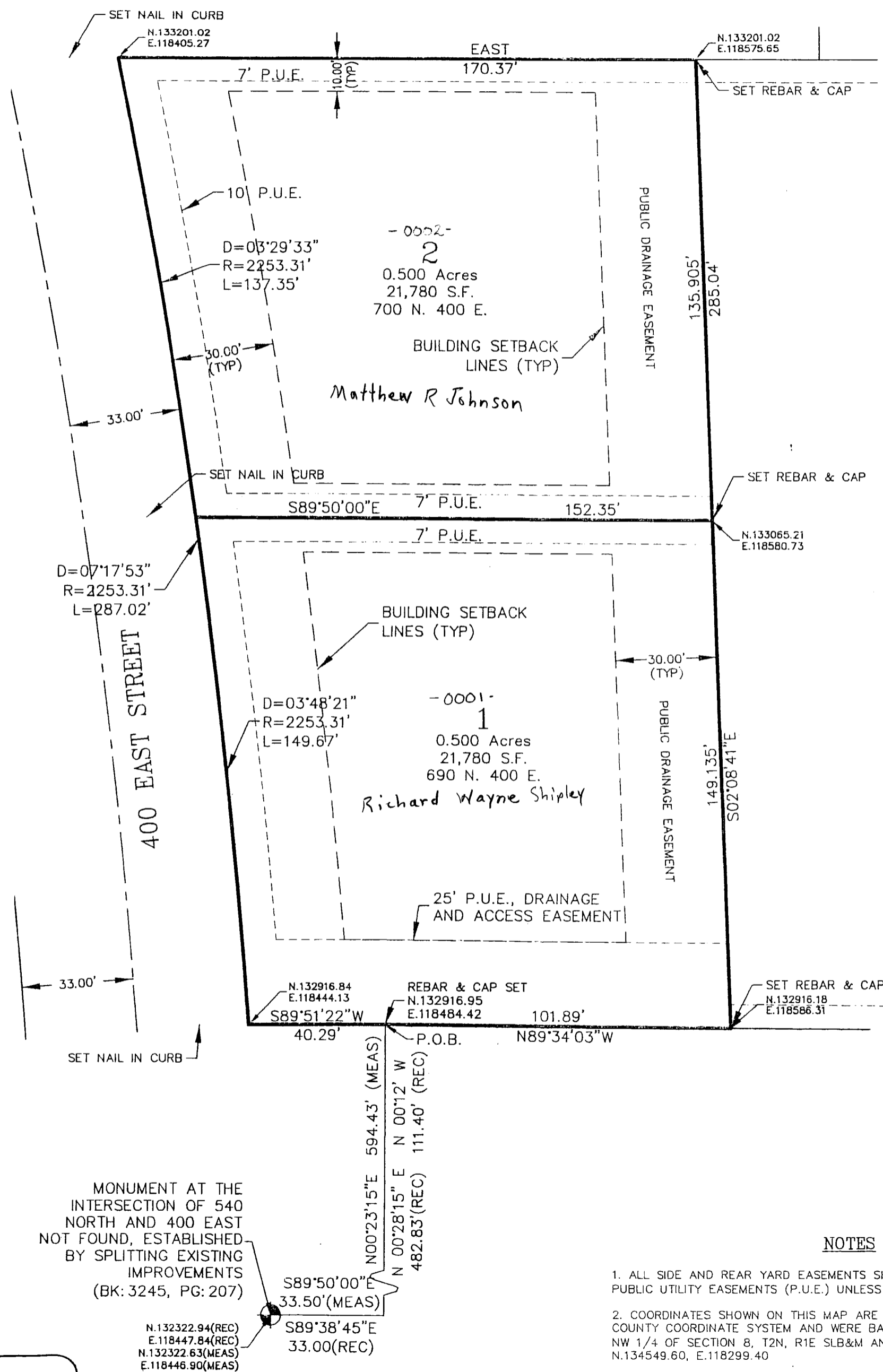
DEVELOPMENT: MATT JOHNSON SUBDIVISION  
 CITY: CENTERVILLE LOTS: 1 THRU 2

NW 1/4 SEC. 8 T.2N, R.1E  
 LOT 3, BLOCK E, BC  
 CENTERVILLE TS  
 S.L.M. DAVIS COUNTY, UTAH

FILE # 4965  
 R 10-16-09

232

02



MONUMENT AT THE INTERSECTION OF 540 NORTH AND 400 EAST NOT FOUND, ESTABLISHED BY SPLITTING EXISTING IMPROVEMENTS (BK: 3245, PG: 207)

N.132322.94(REC)  
 E.118447.84(REC)  
 N.132322.63(MEAS)  
 E.118446.90(MEAS)

### NOTES

1. ALL SIDE AND REAR YARD EASEMENTS SHOWN ARE TYPICAL 7' WIDE PUBLIC UTILITY EASEMENTS (P.U.E.) UNLESS OTHERWISE NOTED.
2. COORDINATES SHOWN ON THIS MAP ARE INTENDED TO BE IN THE DAVIS COUNTY COORDINATE SYSTEM AND WERE BASED ON TYING BACK TO THE NW 1/4 OF SECTION 8, T2N, R1E, SLB&M AND HAVING A COORDINATE OF N.134549.60, E.118299.40
3. APPROVAL OF THIS DEVELOPMENT PLAT BY CENTERVILLE CITY DOES NOT CONSTITUTE ANY REPRESENTATION AS TO THE ADEQUACY OF SUB-SURFACE SOIL CONDITION NOR THE LOCATION OR DEPTH OF GROUNDWATER TABLES.
4. FRONT YARD EASEMENTS ARE 10' TYPICAL

**Byrd & Associates L.L.C.**  
 Engineers & Land Surveyors  
 505 South Main Street  
 Bountiful, Utah 84010  
 Phone (801)-292-0400  
 Fax (801)-292-8216