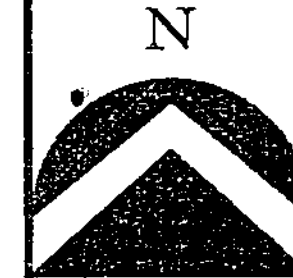


# Slagowski Subdivision

Being a Part of the Northwest Quarter of Section 17, T.2N., R.1E., S.L.B.& M.  
Including all of Lot 48 of Island View Subdivision Plat H  
Centerville City, Davis County, Utah

PREFIX  
02-228

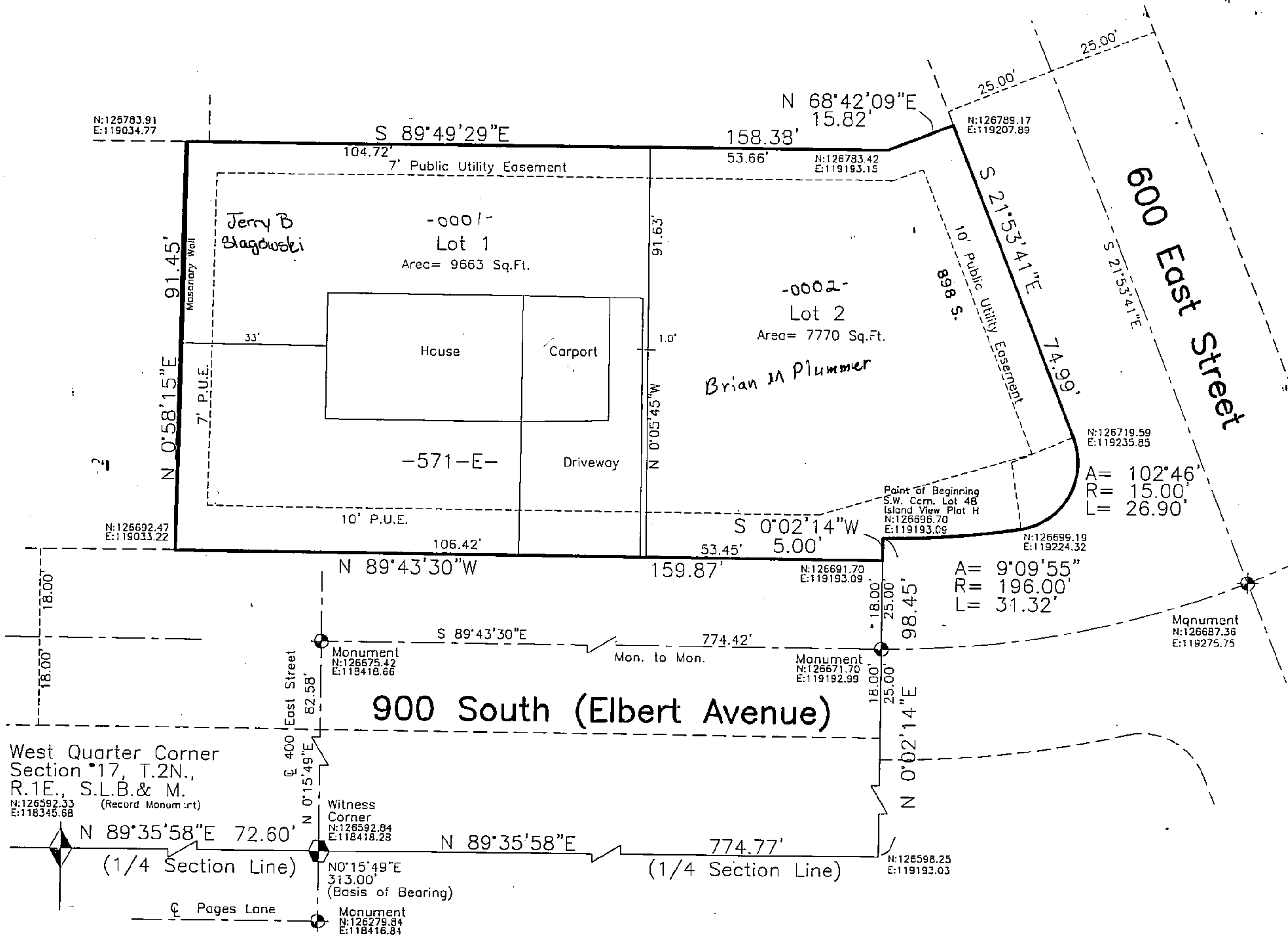
LAST #  
0002



SCALE:  
1" = 20'

228

02



West Quarter Corner  
Section 17, T.2N.,  
R.1E., S.L.B.& M.  
N:126592.33  
E:118345.68  
(Record Monument)

Witness  
Corner  
N:126592.84  
E:118418.28  
N 0°15'49"E  
313.00'  
(Basis of Bearing)

Monument  
N:126279.84  
E:118416.84

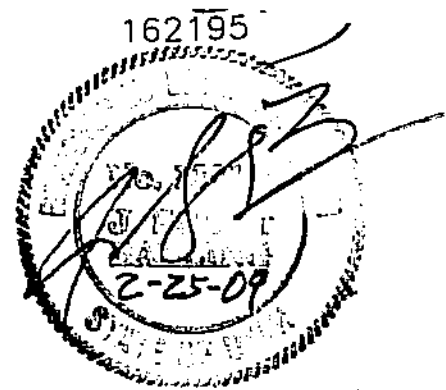
Point of Beginning  
S.W. Corn. Lot 48  
Island View Plat H  
N:126696.70  
E:119193.09  
A= 102°46'  
R= 15.00'  
L= 26.90'

A= 9°09'55"  
R= 196.00'  
L= 31.32'

Monument  
N:126687.36  
E:119275.75

**Notes**

- 1- All lots are zoned RL
- 2- All Easements fronting roads are 10 ft. wide unless otherwise noted. All side yard and rear yard easements are 7 ft. wide unless noted. All easements shown are Public Utility Easements (P.U.E.)
- 3- All coordinates are based on the Davis County Surveyor's Office Datum.
- 4- Approval of this development plat by Centerville City does not constitute any representation as to the adequacy of sub-surface soil condition nor the location or depth of groundwater tables.
- 5- All Existing Easements on Lot 48 of Island View Plat H are to be vacated with this recording.



DEVELOPMENT: SLAGOWSKI SUBDIVISION  
CITY: CENTERVILLE

NW 1/4 SEC. 17 T.2N., R.1E  
ALL OF LOT 48, ISLAND  
VIEW SUBD. PLAT H  
S.L.M. DAVIS COUNTY, UTAH

FILE # 4913  
R 02-26-09