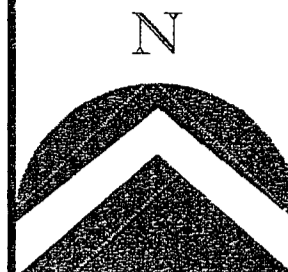


PINEAE VILLAGE CONDO PLAT II
 AMENDING PINEAE VILLAGE
 P.U.D. LOTS 154 & 155

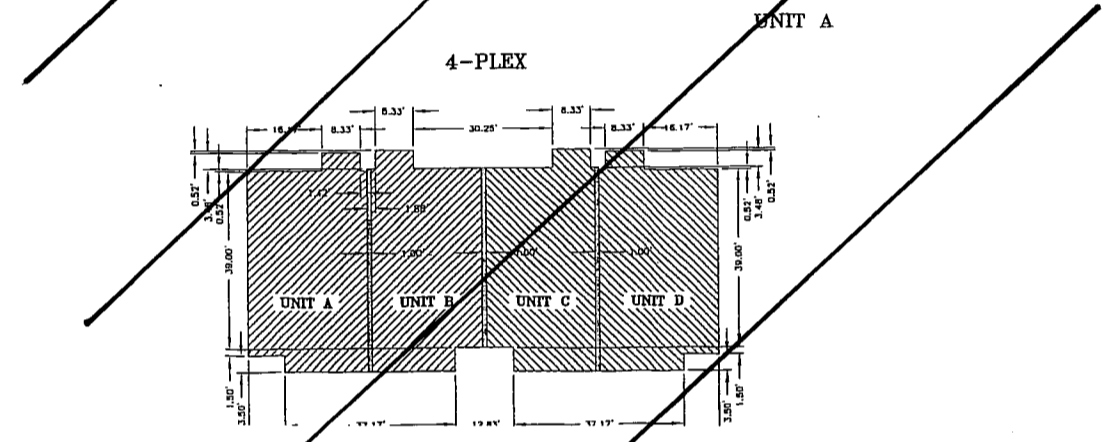
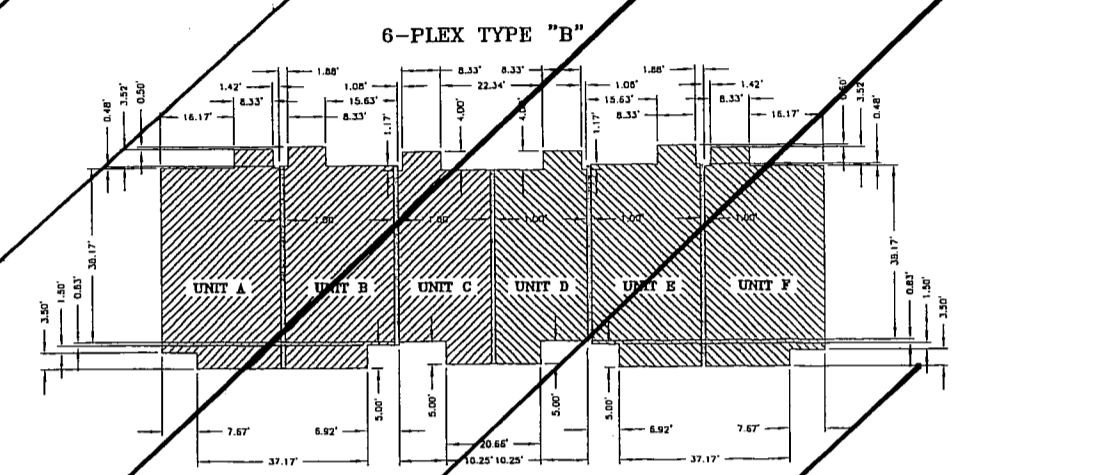
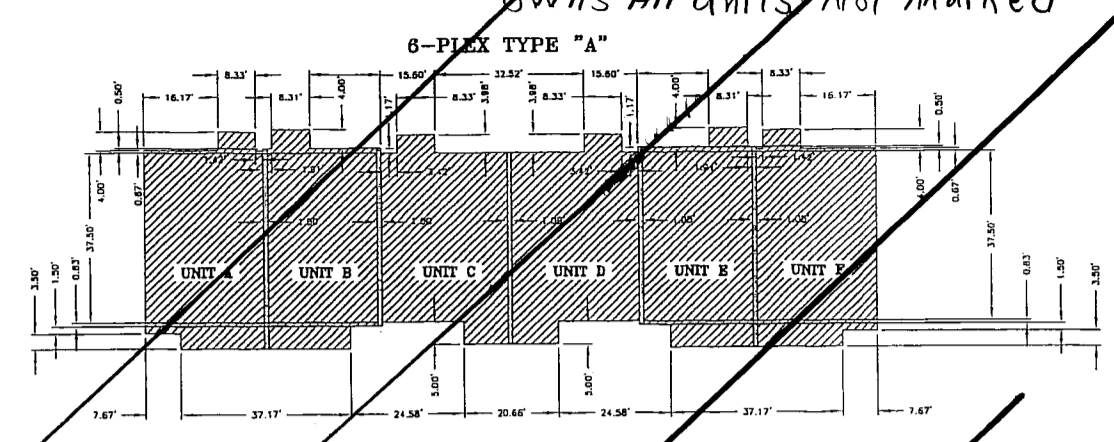
LOCATED IN THE NORTH *Half* OF
 SECTION 7, TOWNSHIP 2 NORTH, RANGE 1 EAST,
 SALT LAKE BASE AND MERIDIAN
 Centerville, Davis County, Utah

PREFIX
 02-225
 LAST #
 0052

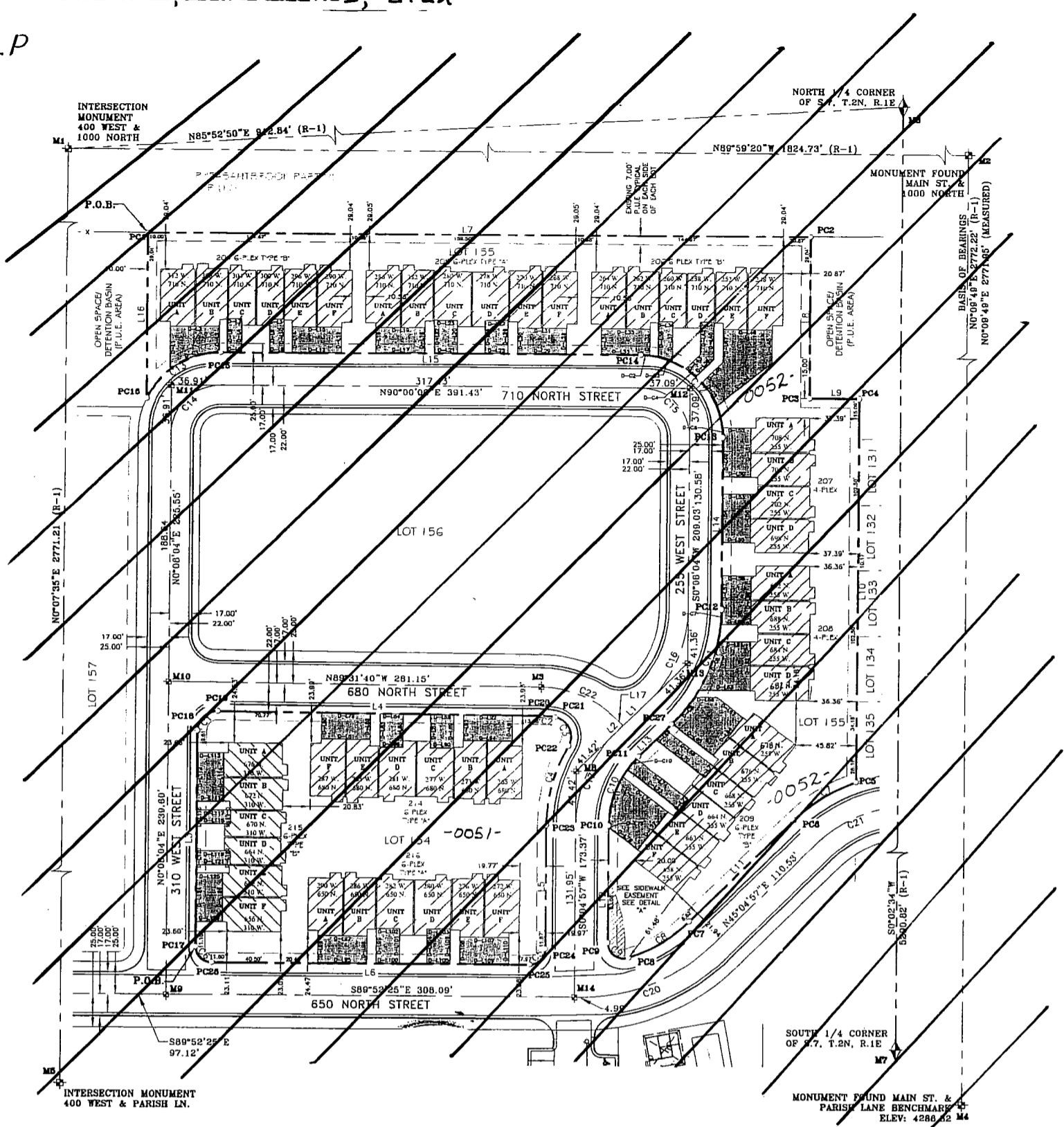


SCALE:
 1" = 100'

Cityview Pineae Village 227 LP
 owns All Units Not Marked



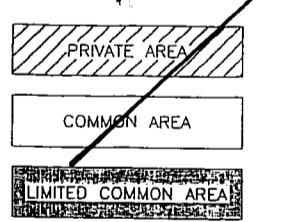
NOT TO SCALE



SEE PINEAE VILLAGE PLAT II PUD - PG.02-229

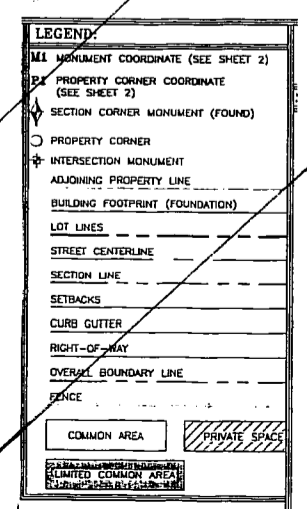
CURVE TABLE				
CURVE	DELTA	RAO	LANG	CHORD
C1	80.2016	15.00	23.85	8.45
C2	10.5517	58.00	11.50	8.98
C3	108.3138	15.00	28.41	17.20
C4	29.2011	122.00	6.53	13.50
C5	80.2016	12.00	1.88	0.45
C6	80.0028	12.00	1.85	0.44
C7	29.2717	122.00	6.53	13.50
C8	28.7274	122.00	6.53	13.50
C9	108.0231	12.00	22.63	5.35
C10	49.0000	75.00	88.00	37.74
C11	44.5531	128.00	88.00	42.28
C12	44.5531	82.00	87.53	44.55
C13	44.0433	87.00	89.34	43.77
C14	80.0000	37.00	58.00	23.78
C15	80.0804	37.00	58.21	23.87
C16	44.5531	100.00	78.43	41.37
C17	45.0000	100.00	78.54	41.42
C18	N/A	N/A	N/A	N/A
C19	N/A	N/A	N/A	N/A
C20	44.5531	140.00	110.00	58.05
C21	44.5531	100.00	78.40	41.34
C22	44.3837	80.00	82.20	40.73

LINE TABLE	
LINE BEARING	DIST
L1	S45°04'57"W 27.01
L2	S45°04'57"W 8.97
L3	N0°08'04"E 165.30
L4	S83°31'40"E 243.93
L5	S0°04'57"W 84.81
L6	S89°29'22"W 249.06
L7	S0°00'00"E 500.85
L8	S0°00'00"E 128.33
L9	N0°08'04"E 37.98
L10	S0°08'04"W 282.81
L11	S45°04'57"W 110.53
L12	N0°04'57"E 89.87
L13	N45°04'57"E 135.88
L14	N0°08'04"E 37.98
L15	S89°29'22"W 249.06
L16	N0°00'00"E 128.06
L17	N44°55'03"W 18.38



* DAVIS COUNTY COORDINATES AS RECORDED IN THE COUNTY SURVEYORS OFFICE. ALL OTHER DAVIS COUNTY COORDINATES SHOWN ARE CALCULATED GROUND COORDINATES BASED ON MEASURED DISTANCES FROM M6 AND M7.
 TO CONVERT LOCAL COORDINATES TO DAVIS COUNTY COORDINATES THE PROJECT WAS ROTATED -0°07'47" WITH THE AXIS BEING THE MID POINT BETWEEN MONUMENTS M6 AND M7. THENCE, SCALED WITH A SCALE FACTOR OF 1.0002786485, THENCE ADD 121708.0130 TO THE NORTHERN COORDINATE AND 108594.4222 TO THE EASTING COORDINATE.
 PC = PROPERTY CORNER
 M = MONUMENT

GENERAL NOTES:
 (R-1) = RECORD PER PINEAE VILLAGE P.U.D. PLAT RECORDED APRIL 27, 2007 AS ENTRY 2285480.
 (R-2) = RECORD PER DAVIS COUNTY TOWN & RANGE REFERENCE PLAT FOR TOWNSHIP 2 NORTH, RANGE 1 EAST, RECORDED DECEMBER 8, 1973.
 1. THIS PLAT IS BASED ON A LOCAL GROUND COORDINATE SYSTEM (SEE COORDINATE TABLE ON SHEET 2 OF 2).
 2. APPROVAL OF THIS DEVELOPMENT PLAT BY CENTREVILLE CITY DOES NOT CONSTITUTE ANY REPRESENTATION AS TO THE ADEQUACY OF SUB-SURFACE SOIL CONDITIONS NOR THE LOCATION OR DEPTH OF GROUNDWATER TABLES.
 3. THIS PLAT IS BASED ON INFORMATION PROVIDED BY GOLD METALLION HOMES AND THE PINEAE VILLAGE P.U.D. PLAT RECORDED APRIL 27, 2007 AS ENTRY 2285480.
 4. ALL COMMON AREAS ARE TO BE PUBLIC UTILITY AND DRAINAGE EASEMENTS.



PID	OWNER	UNIT	BLDG
0001		A	207
0002		B	
0003		C	
0004		D	
0005		E	
0006		F	
0007		A	205
0008		B	
0009		C	
0010		D	
0011		E	
0012		F	
0013		A	206
0014		B	
0015		C	

PID	OWNER	UNIT	BLDG
0031		E	209
0032		F	
0033	Charles D. Thomas (Trs)	A	214
0034		B	
0035		C	
0036		D	
0037		E	
0038	Margan N. Clement	F	
0039	Douglas H. Alexandro	A	215
0040		B	
0041		C	
0042		D	
0043		E	
0044	SUSAN M. FORD	F	
0045	Carson Christensen et al	A	216

PID	OWNER	UNIT	BLDG
0016		D	206
0017		E	
0018		F	
0019		A	207
0020		B	
0021		C	
0022		D	
0023		E	
0024		F	208
0025		A	
0026		B	
0027		C	
0028		A	209
0029		B	
0030		C	

PID	OWNER	UNIT	BLDG
0046		B	216
0047	Richard W. Wolf Jr	C	
0048		D	
0049		E	
0050		F	
0051		Common Area	
0052		Common Area	

DEVELOPMENT: PINEAE VILLAGE CONDO PLAT II
 BLDGS: 204, 205, 206, 209, 214, 215, 216
 CITY: CENTERVILLE, UTAH
 B.L.P. c.s.: 2, 6, 7, 1, 208
 UNITS: A THRU D
 COMMON AREA

LOTS 154 & 155 PINEAE
 VILLAGE PUD
 S.L.M. DAVIS COUNTY, UTAH

FILE # 4852
 R 07-21-08

