

# PINEAE VILLAGE CONDO PLAT I CENTERVILLE

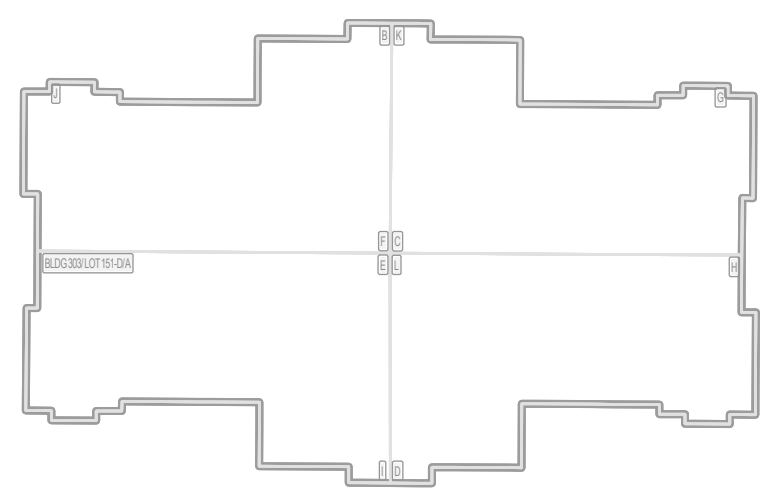
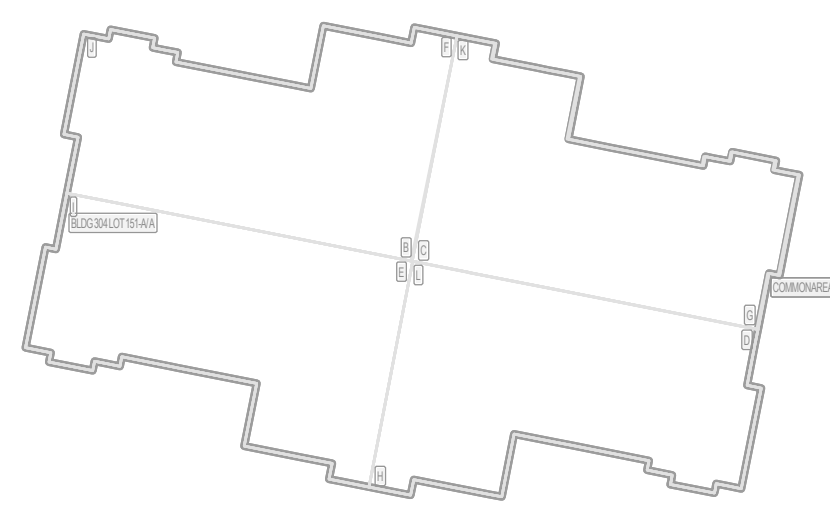
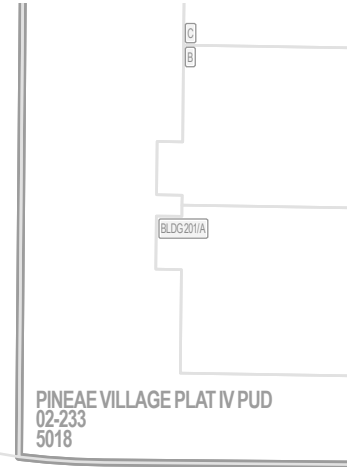
Tax ID Prefix

**02-224**

Plat ID: 4761

Sheet 1 of 3

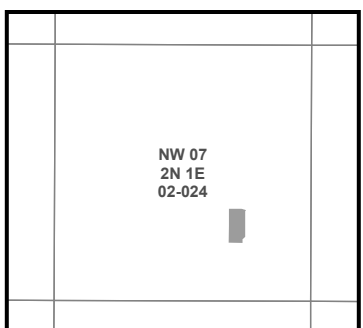
Year Recorded: 2008



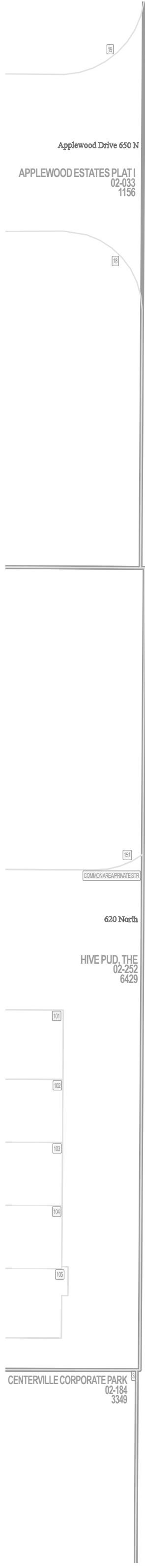
**Parcel ID**

**Lot Number**

1 inch = 30 feet



NOTE: Distance, bearings and radius values are approximate. User needs to refer to the recorded legal descriptions for exact bearing and distances. For cadastral or technical information, see the dedicated plat and or legal descriptions in recorded documents.



# PINEAE VILLAGE CONDO PLAT I CENTERVILLE

Tax ID Prefix

**02-224**

Plat ID: 4761

Sheet 2 of 3

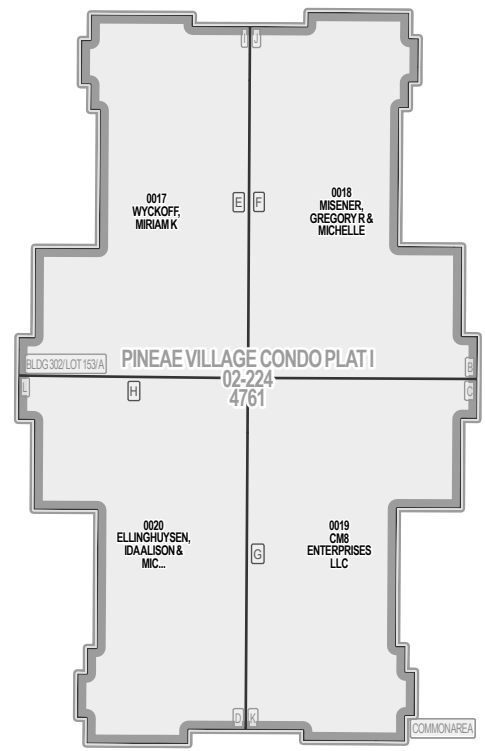
Year Recorded: 2008

Applewood Drive 650 N  
APPLEWOOD ESTATES PLAT I  
02-033  
1156

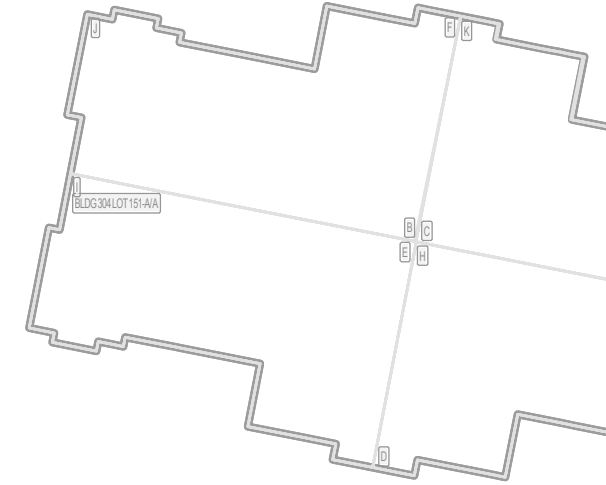
650 North

02-233  
5018

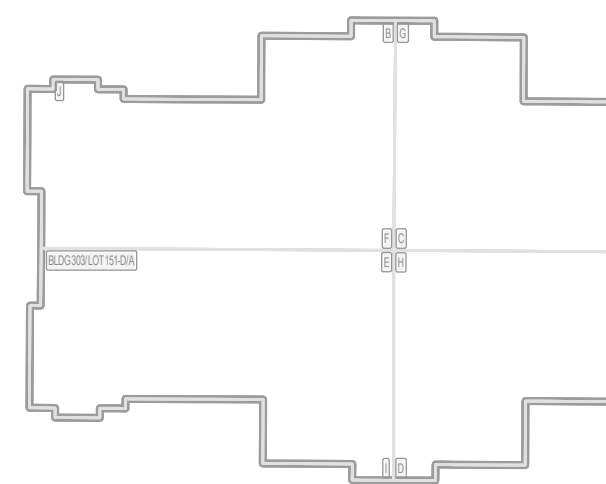
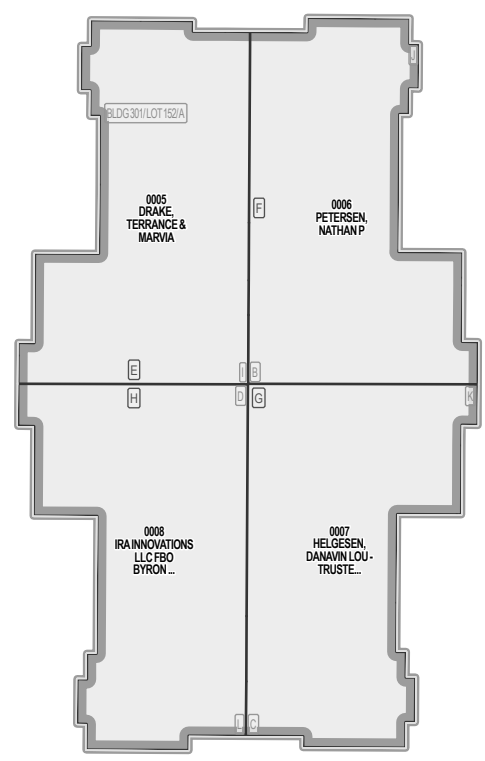
400 West



PINEAE VILLAGE PLAT III, LOTS 151 A-F  
02-226  
4886



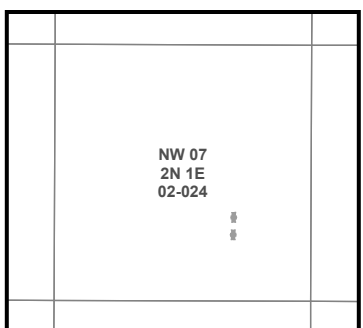
PINEAE VILLAGE CONDO PLAT I  
02-224  
4761



**Parcel ID**

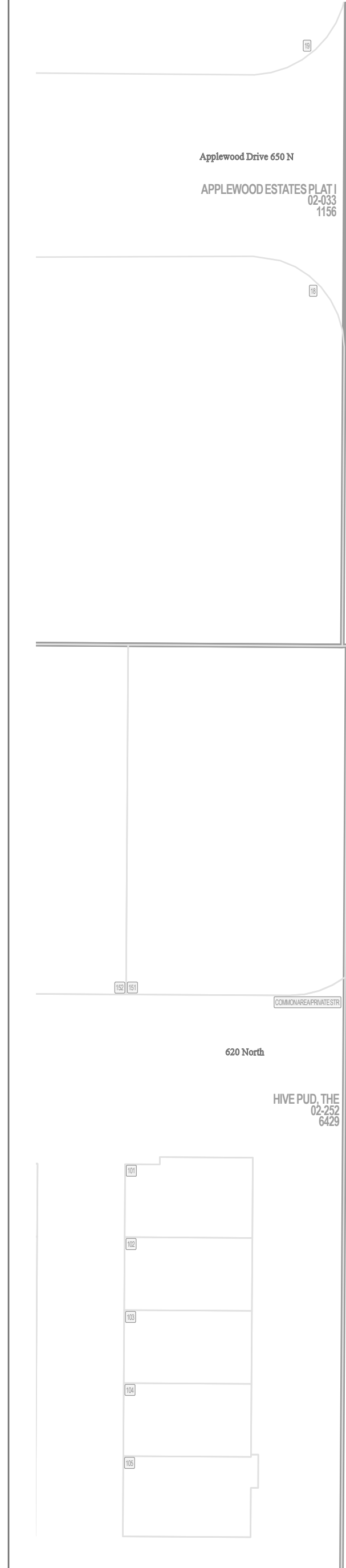
**Lot Number**

1 inch = 30 feet



S L B & M

NOTE: Distance, bearings and radius values are approximate. User needs to refer to the recorded legal descriptions for exact bearing and distances. For cadastral or technical information, see the dedicated plat and or legal descriptions in recorded documents.



# PINEAE VILLAGE CONDO PLAT I CENTERVILLE

Tax ID Prefix

**02-224**

Plat ID: 4761

Sheet 3 of 3

Year Recorded: 2008

Applewood Drive 650 N

APPLEWOOD ESTATES PLAT I  
02-033  
1156

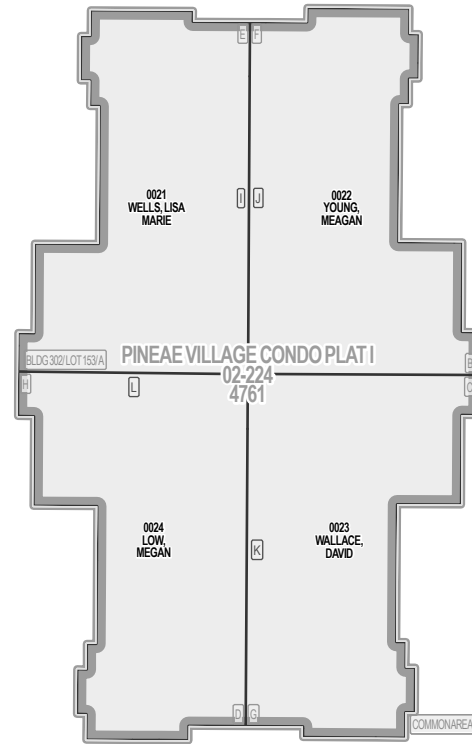
650 North

02-233  
5018

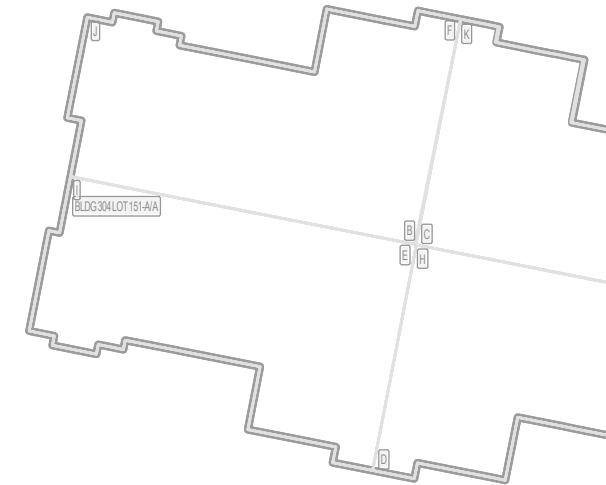
400 West

OPEN SPACE/DET. BASIN

PINEAE VILLAGE PLAT III, LOTS 151 A-F  
02-226  
4886



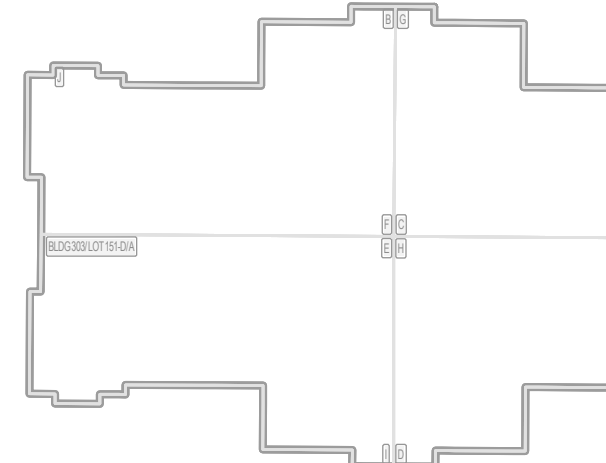
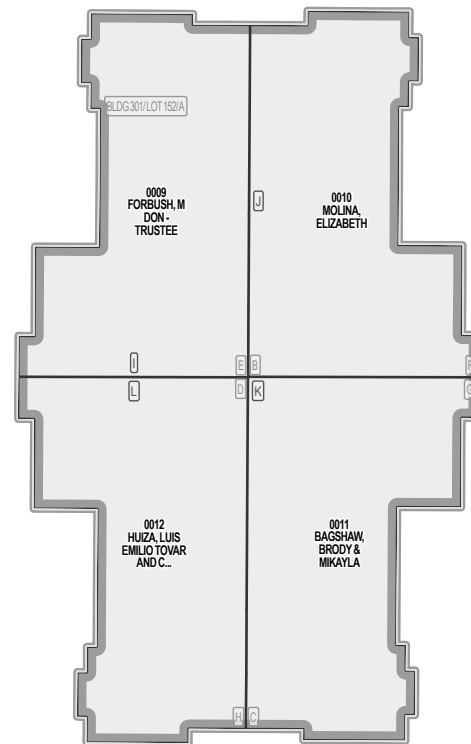
PINEAE VILLAGE CONDO PLAT I  
02-224  
4761



620 North

HIVE PUD, THE  
02-252  
6429

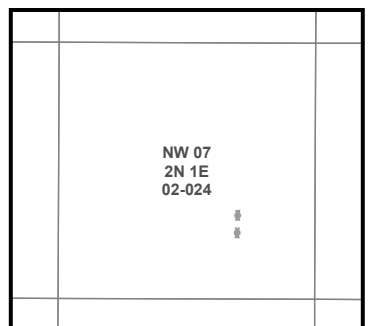
COMMON/NEAR PRIVATE STR.



**Parcel ID**

**Lot Number**

1 inch = 30 feet



S L B & M

CENTERVILLE CORPORATE PARK  
02-184  
3349

NOTE: Distance, bearings and radius values are approximate. User needs to refer to the recorded legal descriptions for exact bearing and distances. For cadastral or technical information, see the dedicated plat and or legal descriptions in recorded documents.

