

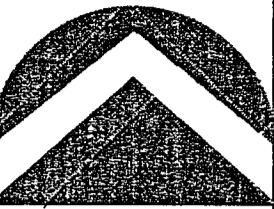
FLORENTINE TOWNS

LOCATED IN THE SOUTHWEST QUARTER OF SECTION 7,
TOWNSHIP 2 NORTH, RANGE 1 EAST, SALT LAKE BASE & MERIDIAN
CENTERVILLE CITY, DAVIS COUNTY, UTAH

PREFIX
02-220

LAST #
0002

N

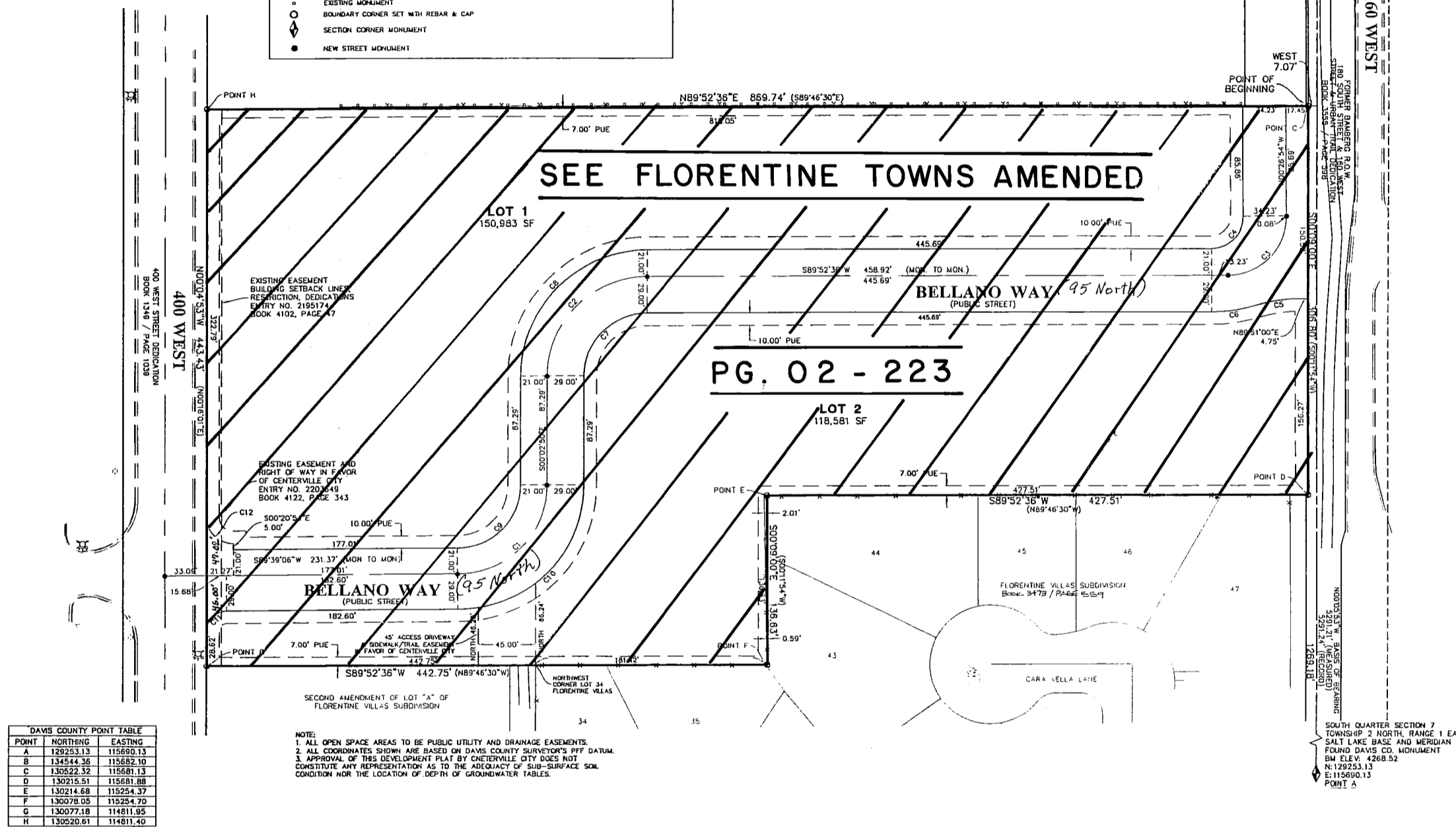


SCALE:
1" = 100'

*Ivory Development LCC
Owns All Lots Not Marked*

CURVE	RADIUS	ARC LENGTH	DELTA	CHORD BEARING	CHORD DISTANCE
C1	71.00'	111.15'	89°41'56"	N44°48'08"E	100.14'
C2	79.00'	123.99'	89°50'28"	S44°54'51"W	111.65'
C3	45.00'	72.52'	80°19'30"	N44°45'51"E	65.74'
C4	35.00'	59.41'	80°19'30"	N44°47'51"E	55.48'
C5	125.00'	38.24'	18°38'33"	S81°32'47"W	36.11'
C6	125.00'	36.25'	18°38'09"	N81°33'31"E	36.17'
C7	50.00'	78.47'	89°50'28"	S44°54'53"W	70.66'
C8	100.00'	156.95'	89°50'28"	S44°54'53"W	141.33'
C9	50.00'	78.28'	89°41'56"	N44°48'08"E	70.52'
C10	100.00'	156.55'	89°41'56"	N44°48'08"E	141.05'
C11	18.00'	24.87'	82°23'03"	S44°33'00"W	22.61'
C12	21.00'	33.02'	89°42'02"	S45°14'31"E	28.75'

LEGEND	
	DRAINAGE AND PUBLIC UTILITY EASEMENT (D. AND P.U.E.) AS SHOWN ON THIS PLAN 10' FRONT, 7' BACK
	EXISTING FIRE HYDRANT
	STREET LIGHT
	MONUMENT TO BE SET
	EXISTING MONUMENT
	BOUNDARY CORNER SET WITH REBAR & CAP
	SECTION CORNER MONUMENT
	NEW STREET MONUMENT
	PROPERTY LINE
	MONUMENT LINE
	ROAD CENTERLINE
	FENCE LINE
	(N89°46'30"W) RECORD CALL



DAVIS COUNTY POINT TABLE		
POINT	NORTHING	EASTING
A	129253.13	115680.13
B	134544.36	115682.10
C	130522.32	115681.13
D	130215.51	115681.88
E	130214.68	115254.37
F	130076.05	115254.70
G	130077.18	114811.95
H	130520.81	114811.40

NOTE:
1. ALL OPEN SPACE AREAS TO BE PUBLIC UTILITY AND DRAINAGE EASEMENTS.
2. ALL COORDINATES SHOWN ARE BASED ON DAVIS COUNTY SURVEYOR'S PFF DATUM.
3. APPROVAL OF THIS DEVELOPMENT PLAN BY CENTERVILLE CITY DOES NOT CONSTITUTE ANY REPRESENTATION AS TO THE ACCURACY OF SUB-SURFACE SOIL CONDITION NOR THE LOCATION OF DEPTH OF GROUNDWATER TABLES.

DEVELOPMENT: FLORENTINE TOWNS
CITY: CENTERVILLE LOTS: 1 THRU 2

SW 1/4 SEC. 7 T.2N. R.1E
S.L.M. DAVIS COUNTY, UTAH

FILE # 4662
R 07-06-07

